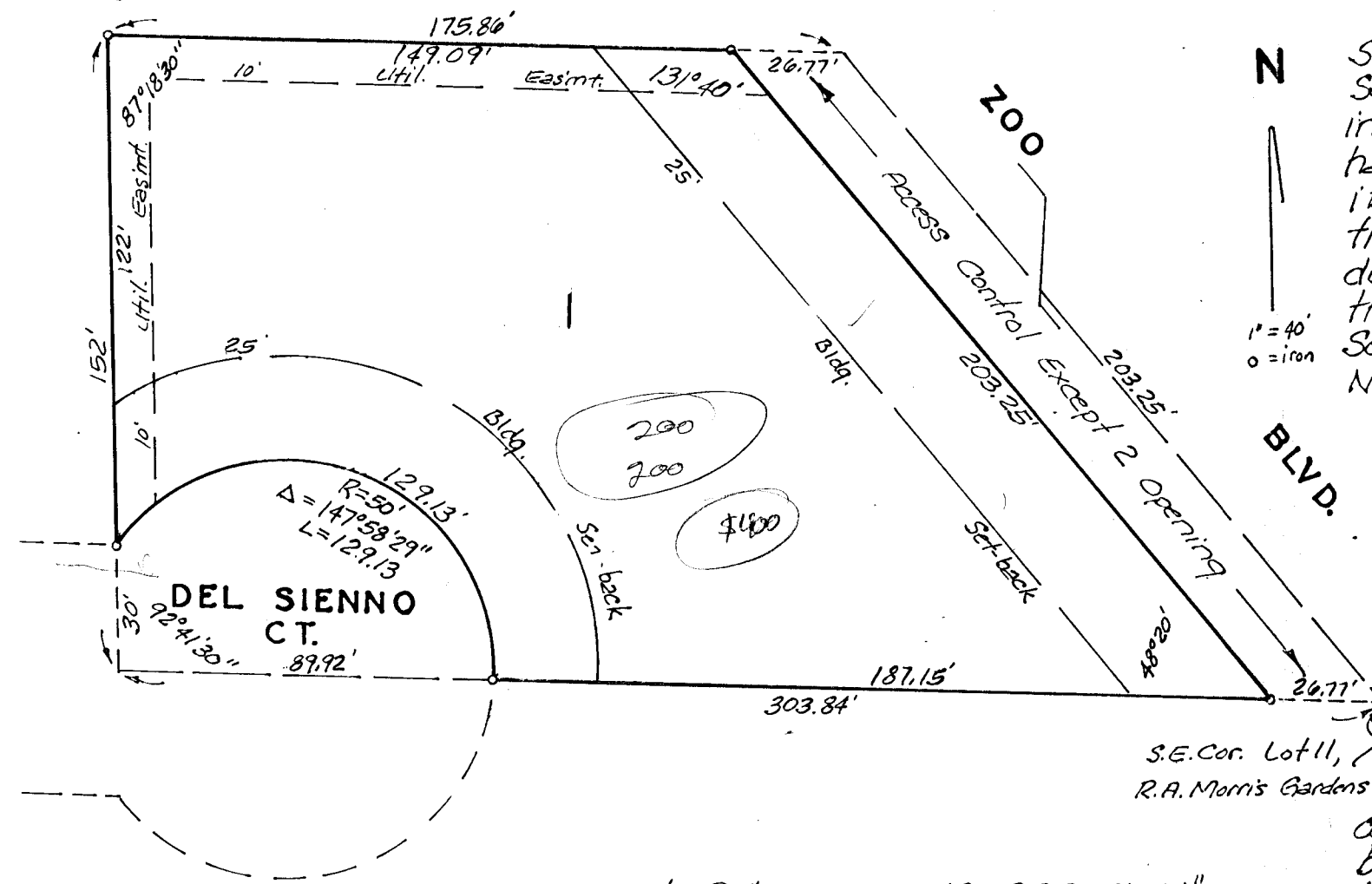


# ABOUT 2ND. ADDITION

WICHITA, KANSAS



State of Kansas) S.S. We, Baughman Company, P.A., Surveyors Sedgwick County, Kansas do hereby certify that we have surveyed and platted 'ABOUT 2ND. ADDITION', Wichita, Kansas and that the accompanying plat is a true and correct exhibit of the property surveyed, described as and being a replat of Lot 11, except the north 163 feet thereof, R.A. Morris Gardens, Sedgwick County, Kansas, being situated in the NE 1/4 of Sec. 14, Twp. 27-S, R-1-W.

Baughman Company  
 5/18/81  
 William L. Korber, Surveyor  
 William L. Korber  
 REGISTERED SURVEYOR  
 1935  
 KANSAS

This plat of "ABOUT 2ND. ADDITION", Wichita, Kansas, has been submitted to and approved by the Wichita-Sedgwick County Metropolitan Area Planning Commission, Wichita, Kansas.  
 Dated this 25th day of September, 1980.  
 Wichita-Sedgwick County Metropolitan Area Planning Commission.

*James L. Gannon* Vice-Chairman  
*Robert A. Calkin* Secretary

This plat approved and all dedications shown hereon accepted by the Board of Commissioners of the City of Wichita, Kansas, this 2nd day of June, 1981.

*R. C. Brown* Mayor  
*Donald C. Givrick* City Clerk

This plat approved and all dedications shown hereon accepted by the Board of Commissioners, Sedgwick County, Kansas, this day of 1981.

*Donald E. Dragg* Chairman  
*Jack Spratt* Commissioner  
*Tom Scott* Commissioner  
*Dorothy K. White* County Clerk

Entered on transfer record, this day of 1981.  
*Dorothy K. White* County Clerk

State of Kansas) S.S. This is to certify that this plat Sedgwick County, Kansas has been filed for record in the office of the Register of Deeds, this day of 1981 at o'clock M; and is duly recorded.

*Bette F. McCall* Register of Deeds  
*Est Ketter* Deputy

Know all men by these presents that we, the undersigned, have caused the land described in the surveyors certificate to be platted into a lot and streets, to be known as "ABOUT 2ND. ADDITION", Wichita, Kansas. The easements are hereby granted as indicated for the construction and maintenance of all public utilities. The streets are hereby dedicated to and for the use of the public. All abutters rights of access to or from 300 Blvd. over and across the east line of Lot 1, are hereby granted to the City of Wichita, provided however that Lot 1, shall have access to 300 Blvd. at 2 points as shall be determined by the City Engineer of the City of Wichita, Kansas.

*James S. Aboud*  
*Rose M. Aboud*  
*James J. Aboud*

State of Kansas) S.S. The foregoing instrument was Sedgwick County, Kansas acknowledged before me, this 17th day of May, 1981, by Rose M. Aboud and James S. Aboud, her husband and James J. Aboud a single person.

My Comm. Exp. 5/12/84  
*Mark A. Slavy* Notary Public

We, the undersigned, holders of a mortgage, on the above described property, do hereby consent to this plat of "ABOUT 2ND. ADDITION", Wichita, Kansas.

*Haysville State Bank*  
*Randy Hall*

State of Kansas) S.S. The foregoing instrument was Sedgwick County, Kansas acknowledged before me, this 17th day of May, 1981, by Randy Hall, Vice-President of Haysville State Bank.

My Comm. Exp. 5/12/84  
*Mark A. Slavy* Notary Public