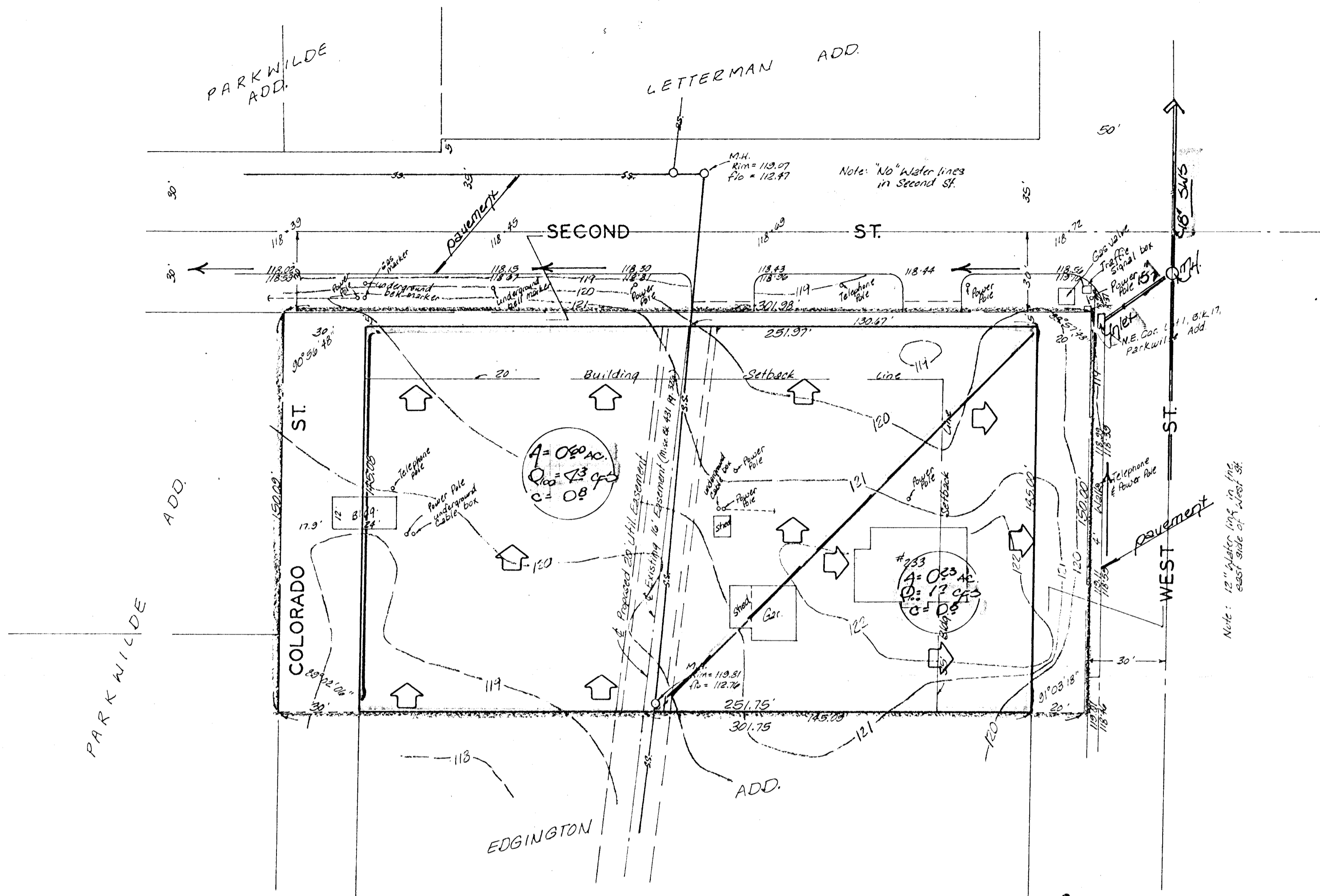


1" = 30'
 Bench mark:
 City disc., 34 feet west &
 18 feet south of centerlines
 of West St. & 2nd St.
 Elevation = 118.87 City Datum



SKETCH PLAT
AERO CAPITOL ADDITION

LOT 1, AND THE NORTH 30 FEET OF LOT 3,
 BLOCK 17, PARKWILDE ADDITION TO THE
 CITY OF WICHITA, SEDGWICK COUNTY, KANSAS

OWNER: AERO CAPITOL INVESTMENT COMPANY, INC.
 % JEFF BANNON - AGENT

drainage
 plan

10-15-82