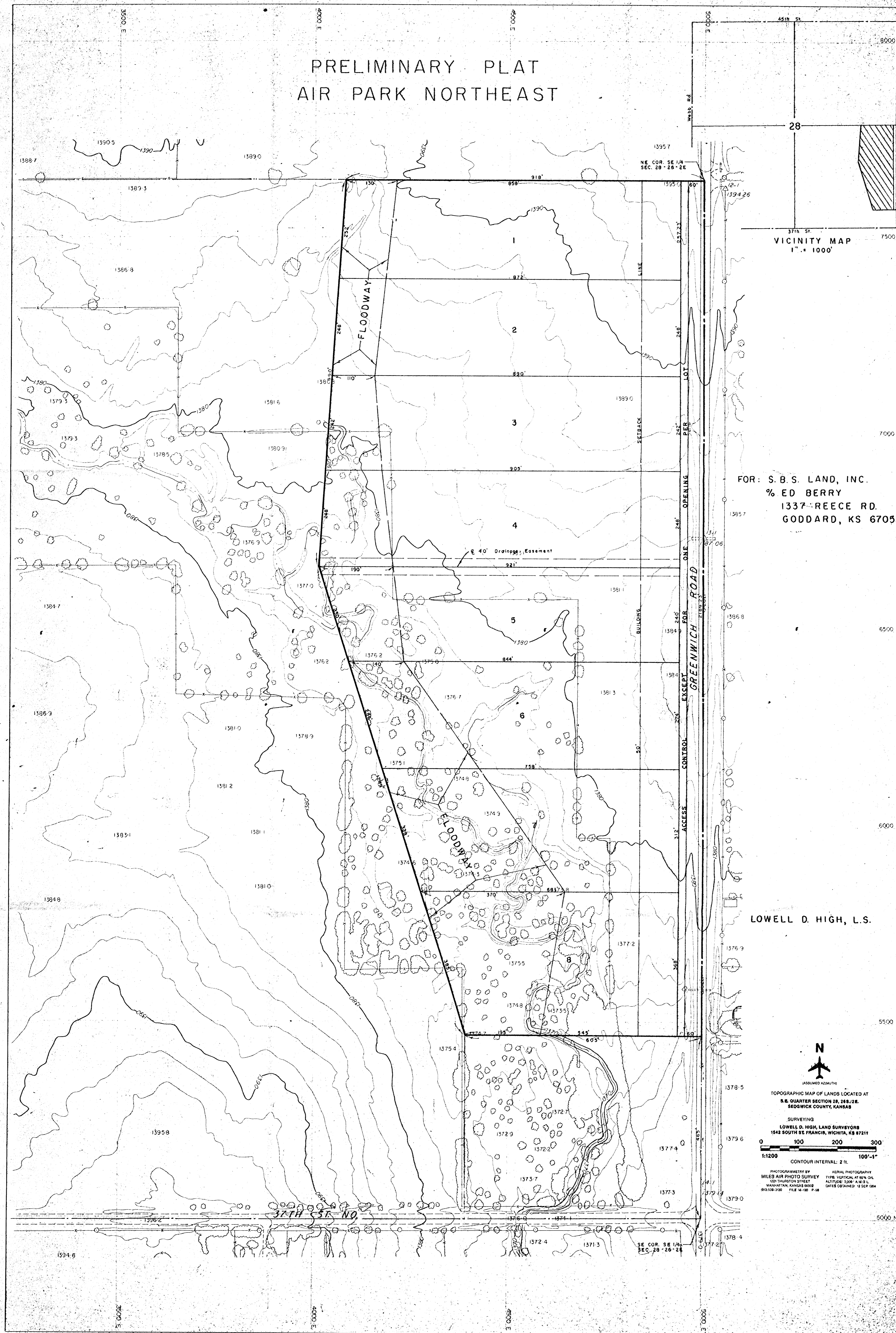


PRELIMINARY PLAT
AIR PARK NORTHEAST



VICINITY MAP
1" = 1000'

FOR: S. B. S. LAND, INC.
% ED BERRY
1337 REECE RD.
GODDARD, KS 67032

LOWELL D. HIGH, L.S.

N
ASSUMED AZIMUTH
TOPOGRAPHIC MAP OF LANDS LOCATED AT
S.E. QUARTER SECTION 28, 28E-2E,
SEDDWICK COUNTY, KANSAS
SURVEYING
LOWELL D. HIGH, LAND SURVEYORS
1542 SOUTH SE FRANCIS, WICHITA, KS 67211
0 100 200 300
1:1200 CONTOUR INTERVAL: 2 FT. 100'-1"

PHOTOGRAMMETRY BY AERIAL PHOTOGRAPHY
MILES AIR PHOTO SURVEY TYPE: VERTICAL AT 90% OIL
101 THURGOOD STREET ALTITUDE: 2000' A.M.S.L.
MANHATTAN, KANSAS 66508 DATE OBTAINED: 12 SEP 1964
R13-28-28E-2E FILE # 4-100 P-18