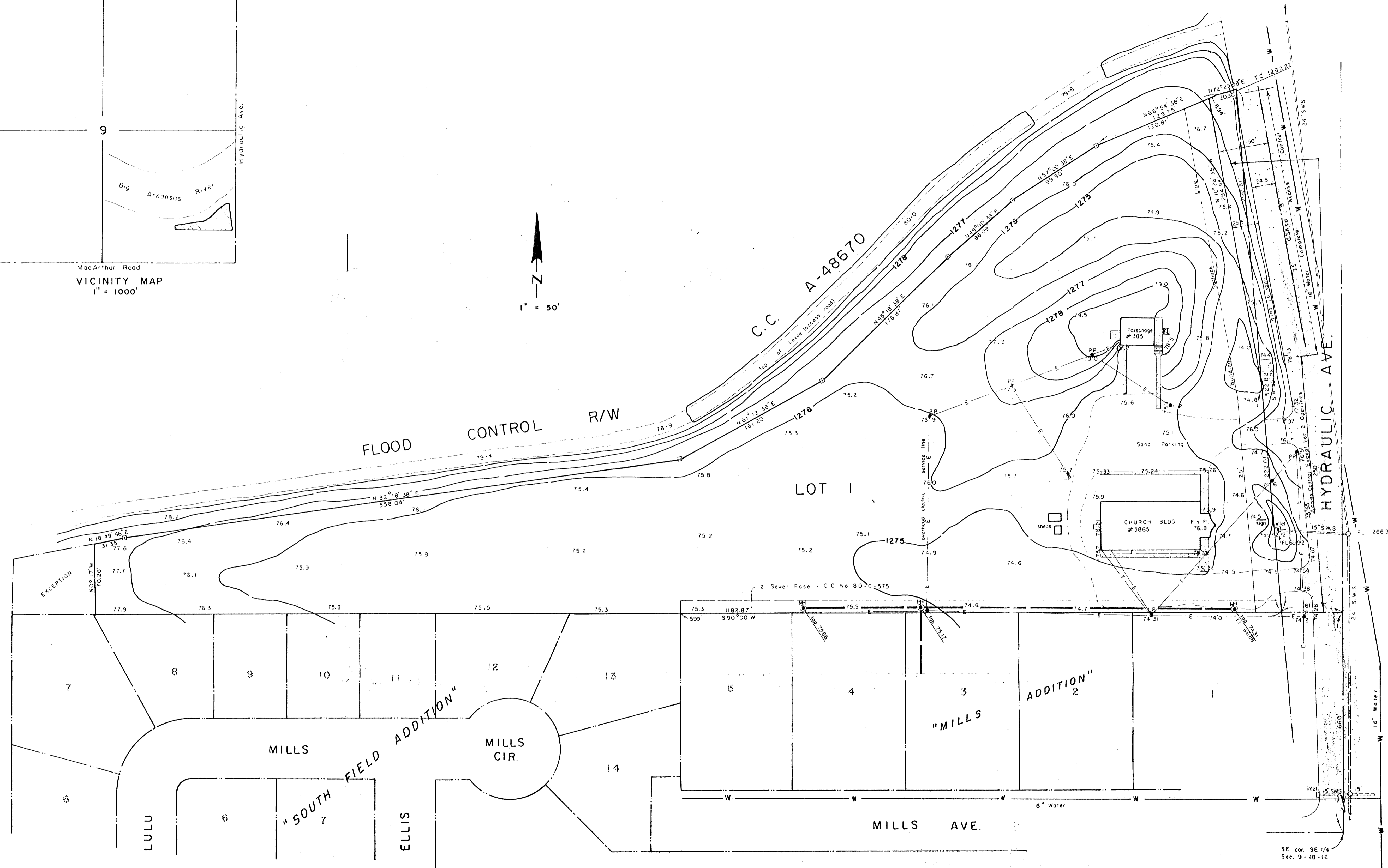
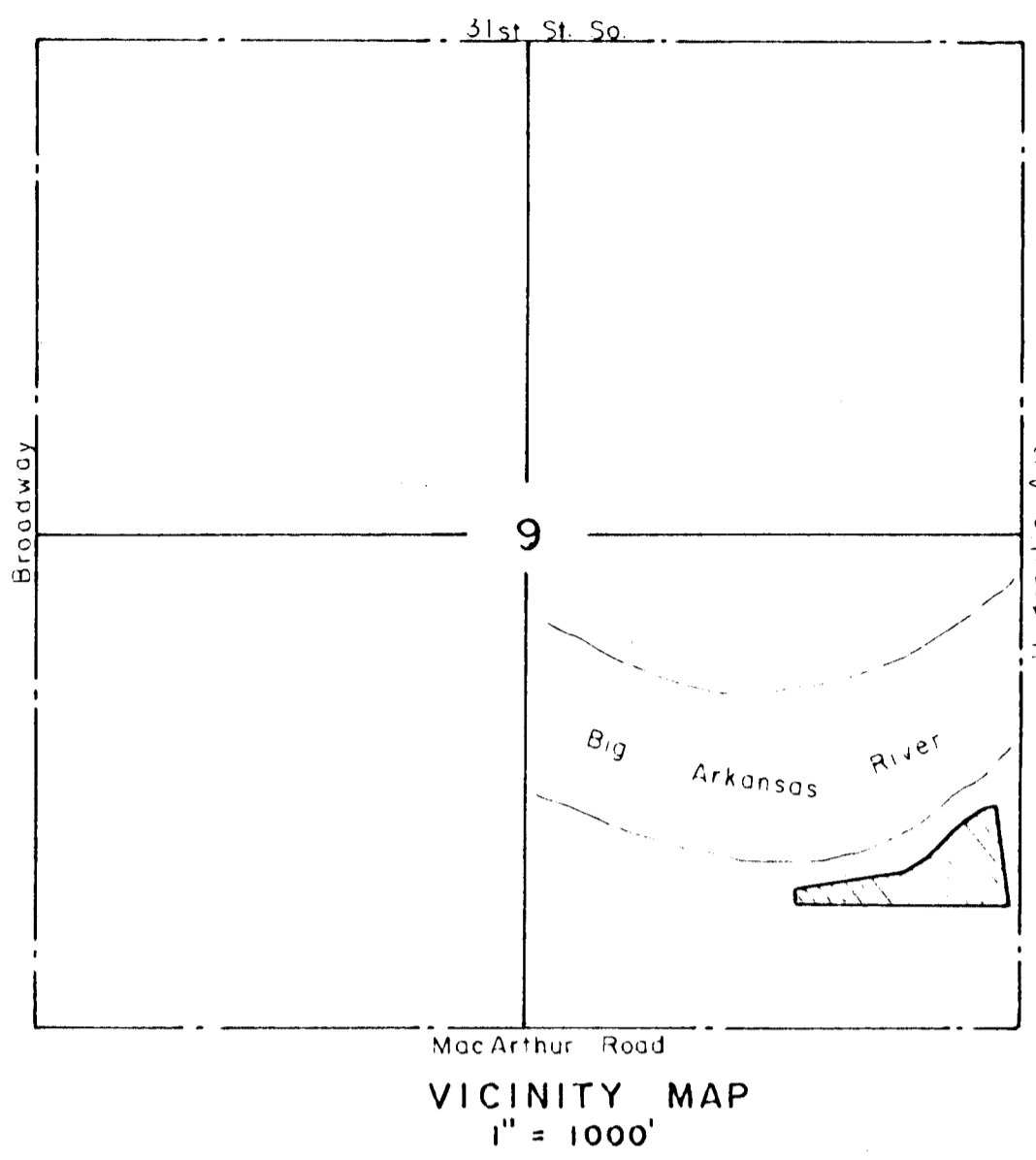


SKETCH PLAT
 ARK VALLEY CHRISTIAN CHURCH ADDITION
 WICHITA, SEDGWICK COUNTY, KANSAS



FOR:
 ARK VALLEY CHRISTIAN CHURCH
 3865 S. HYDRAULIC
 WICHITA, KANSAS

TOPO MADE MAY 2, 1990

HI-TECH SURVEYORS, INC.
 334 S. LAURA
 WICHITA, KANSAS

B.M. - ELEV. 1274.28 - " " on top of curb at SE cor. of property.