

PHASE 2

ASSESS TO LOTS AS FRACTIONAL PARTS
 ALL SINGLE FAMILY LOTS AS $\frac{2}{132}$ EACH
 ALL DUPLEX LOTS AS $\frac{3}{132}$ EACH
 LOT 1 OF BLOCK 1 AS $\frac{6}{132}$
 TOTAL NUMBER OF SINGLE FAMILY LOTS = 51
 TOTAL NUMBER OF DUPLEX LOTS = 8
 ESTIMATED COST = \$11,000 (2439.39 per S.F. lot)

Block 2, lots 1 thru 30, and 34 (2439.39 ea)
 Block 3, lots 1 thru 8, and 11 thru 22 (2439.39 ea)
 Block 1, lot 1 (7312.18) LC
 Block 1, lots 2 thru 9 (3569.09 ea) Duplex

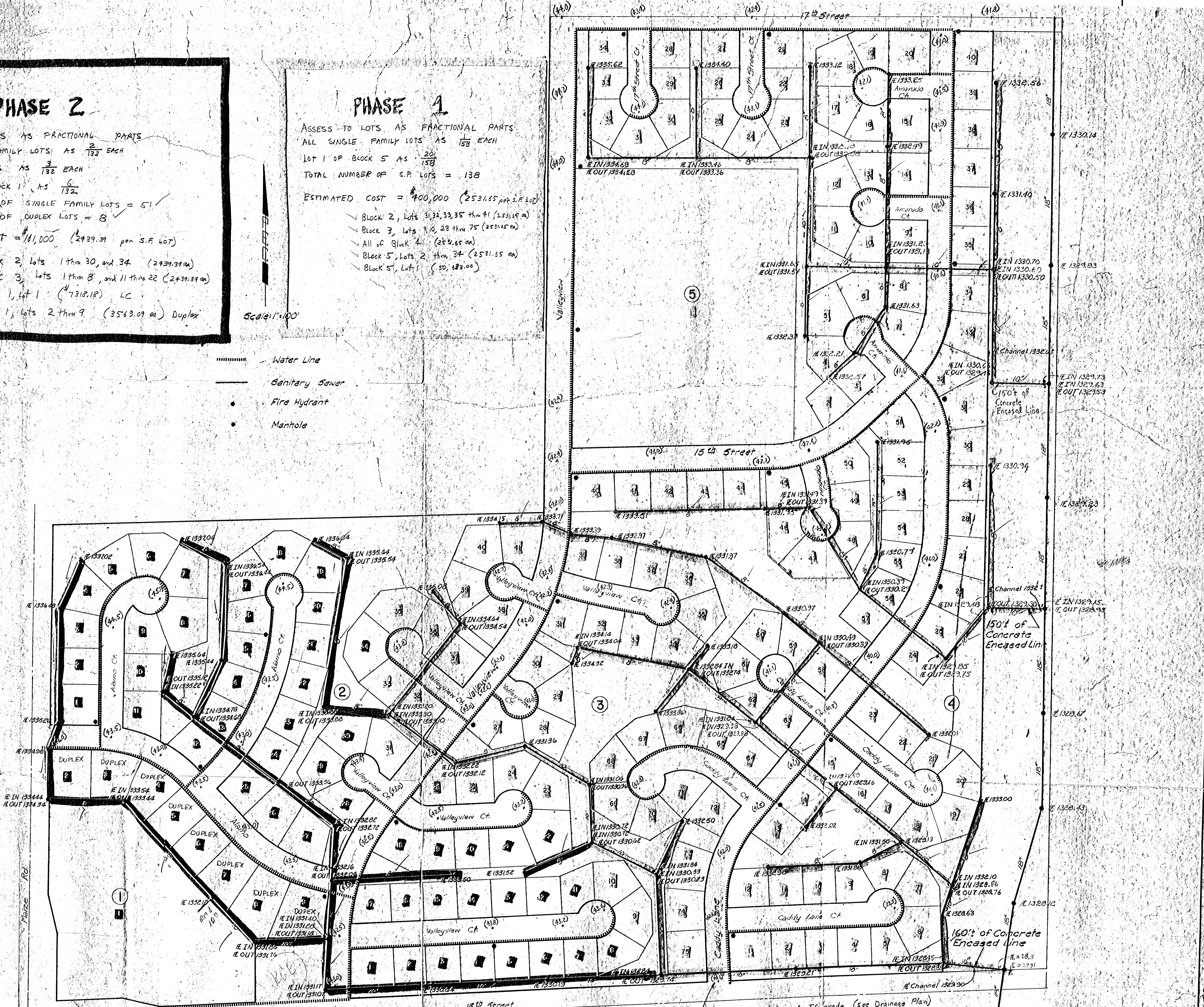
PHASE 1

ASSESS TO LOTS AS FRACTIONAL PARTS
 ALL SINGLE FAMILY LOTS AS $\frac{1}{159}$ EACH
 LOT 1 OF BLOCK 5 AS $\frac{20}{159}$
 TOTAL NUMBER OF S.F. LOTS = 138
 ESTIMATED COST = \$400,000 (2531.65 per S.F. lot)

Block 2, Lots 31, 32, 33, 35 thru 41 (2531.65 ea)
 Block 3, Lots 42, 28 thru 75 (2531.65 ea)
 All of Block 4 (2531.65 ea)
 Block 5, Lots 2 thru 34 (2531.65 ea)
 Block 5, Lot 1 (50,182.00)

Scale: 1" = 100'

- Water Line
- Sanitary Sewer
- Fire Hydrant
- Manhole



102
24
132
1
154

NOTES:

1. All 8" sanitary sewer lines shown at 0.004'/ft.
2. All 10" sanitary sewer lines shown at 0.0015'/ft.
3. All 18" sanitary sewer lines shown at 0.0010'/ft.

TOPOGRAPHY BY MOEHRING ENGRS. FEB 1973

Revised	12/28/72	Checked	SA/Alvin L. M. M.	6/10/75
No.		By		
SANITARY SEWER PRELIMINARY PLANS				
AMARADO ESTATES				
PROFESSIONAL ENGINEERING CONSULTANTS, P.C.A.				
ENGINEERS WICHITA, KANSAS				
Designed by	RM	Job No.	30-73334	Sht. 1 of 1
Drawn by	MA	Date	2-13-74	