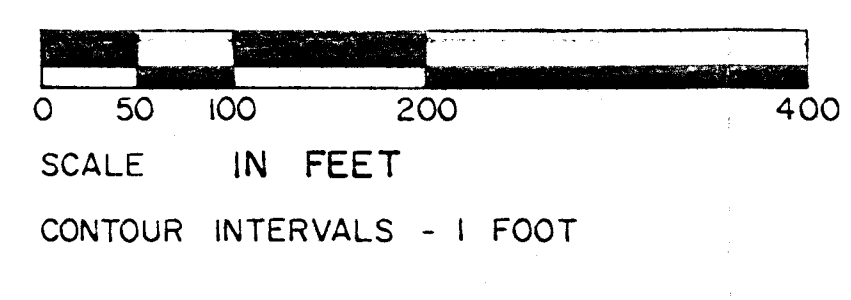
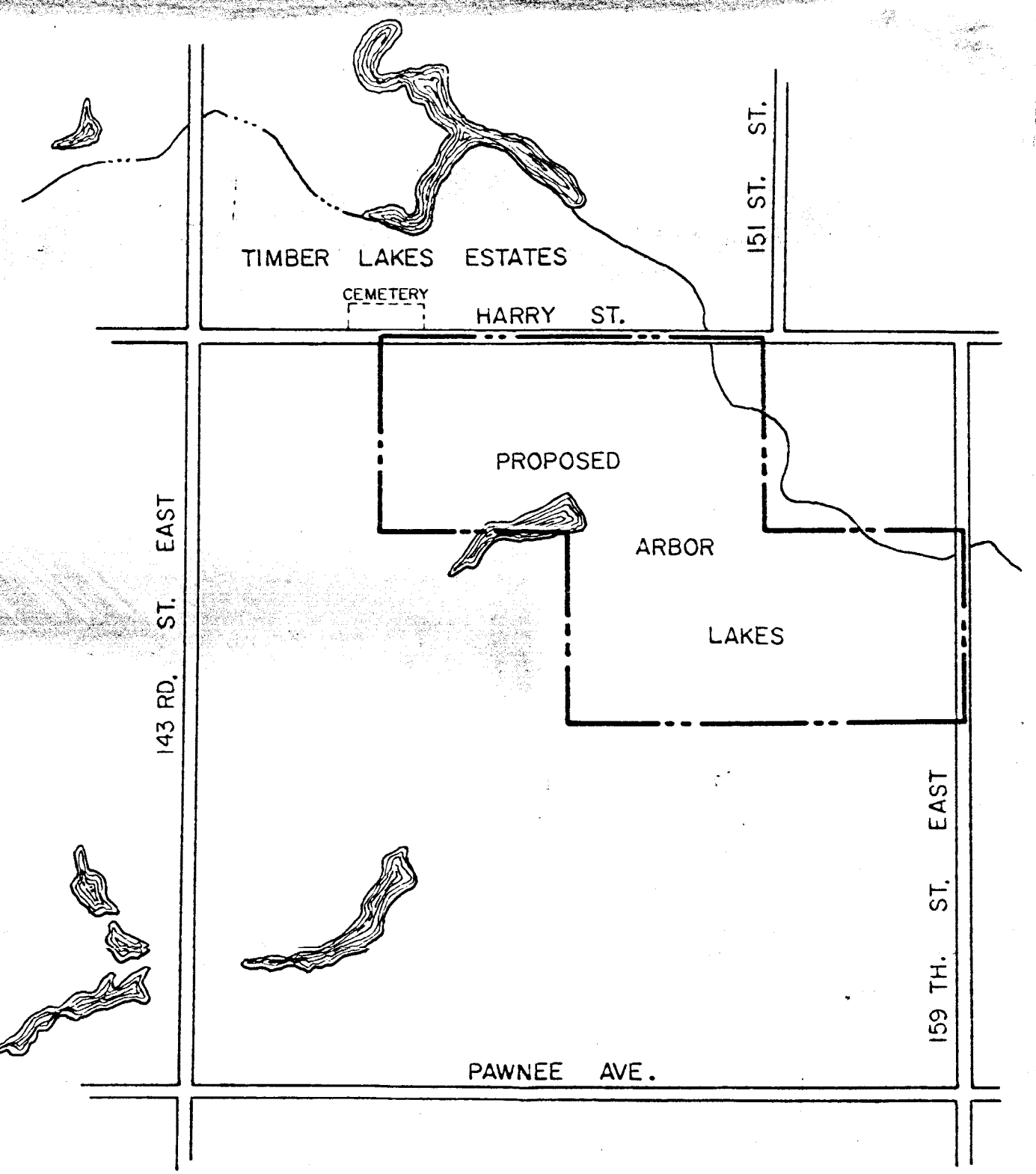


NOTE:
 Reserve A for Entrance
 Sign and Landscaping
 Reserves A, B, C, D, E, F
 for Open Space, Drainage &
 Utilities



40' x 11' x 23 1/2' W.P.B.
 County Designation:
 Bridge No. 841-R-4053



SUBDIVIDER: DOUG CASTLEBERRY AND ASSOCIATES
 REVISED BY: PROFESSIONAL ENGINEERING CONSULTANTS, P.A.,
 1440 EAST ENGLISH, WICHITA, KANSAS

No.	Revision	By	Date
	(REVISED)		
ARBOR LAKES			
PRELIMINARY PLAT			
A SUBDIVISION TO SEDGWICK COUNTY, KANSAS			
PROFESSIONAL ENGINEERING CONSULTANTS, P.A.			
ENGINEERS WICHITA, KANSAS			
Designed by	Job No. 76303	Sheet	of
Drawn by	Date 1/12/77		