

TIMBER LAKES

ESTATES

HARRY STREET

114 Cor. Sec 36  
T27S, R2E

52' X 26' R.C.B.  
(County Designation:  
Bridge No 622-36-3474)

18' X 32' R.C.P.  
(County Designation:  
Bridge No 841-R-5254)

BLOCK 8  
LOT 1  
PROPOSED STABLES &  
RECREATIONAL FACILITIES  
(FLOODWAY)

EXISTING STRUCTURES  
(TO BE REMOVED)

EXISTING STRUCTURE  
(TO REMAIN)

EXISTING STRUCTURE  
(TO BE REMOVED)

LAKE

FLOODWAY AND OPEN SPACE

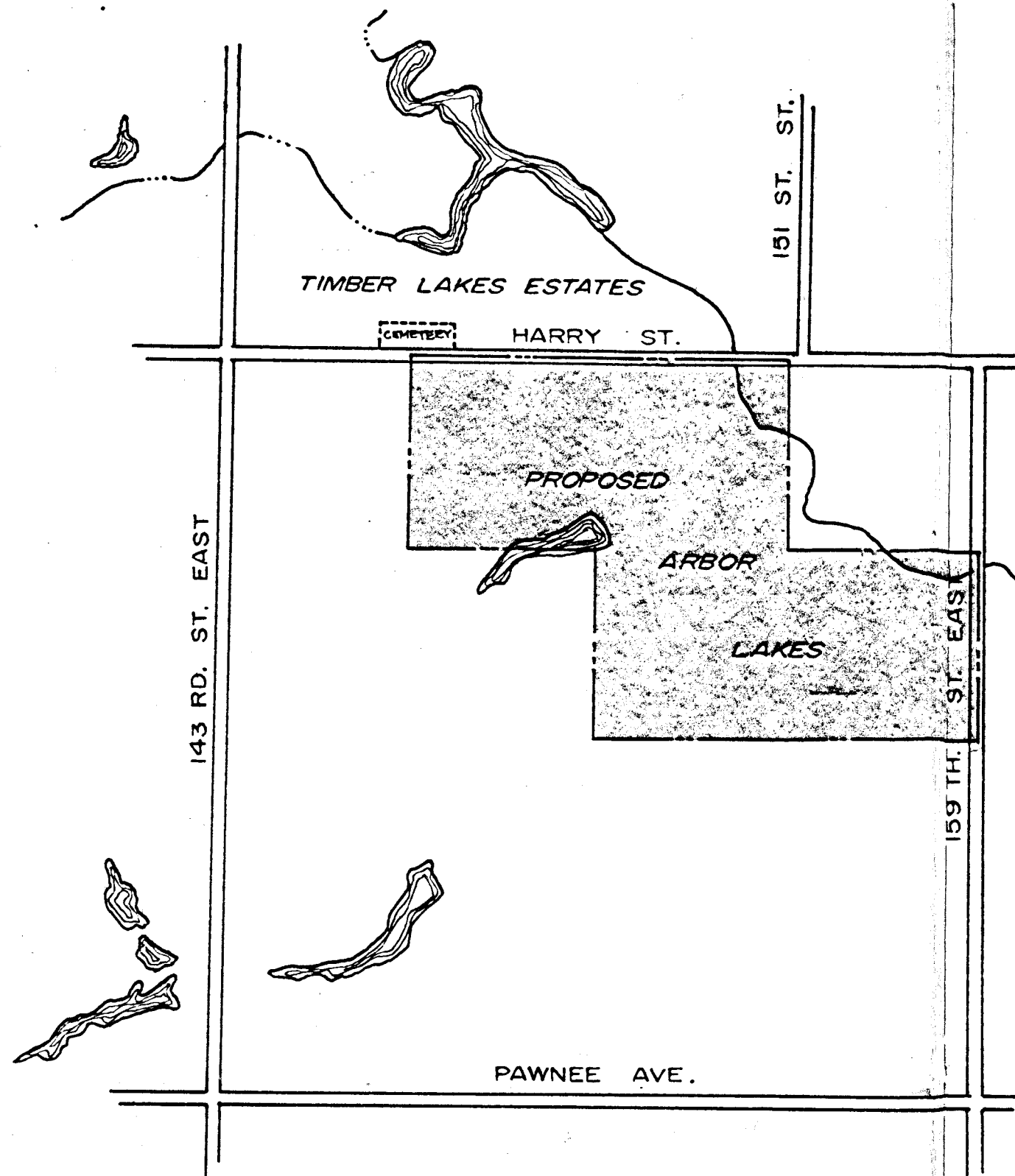
NORTH

0 50 100 200 400  
SCALE IN FEET  
CONTOUR INTERVALS - 2 FOOT

40' X 11' 125' W.P.B.  
(County Designation:  
Bridge No 841-R-4053)

BLOCK 9  
LOT 1  
(ESTATE LOT)

159 TH. ST. EAST



SKETCH PLAT

**ARBOR LAKES**

Center  
Section 36  
T27S, R2E

114 Cor. Sec 36  
T27S, R2E

*Hanning*  
**oblinger-smith corporation**  
Consultants in Planning, Design and Development  
625 First National Bank Building Wichita, Kansas 67202

