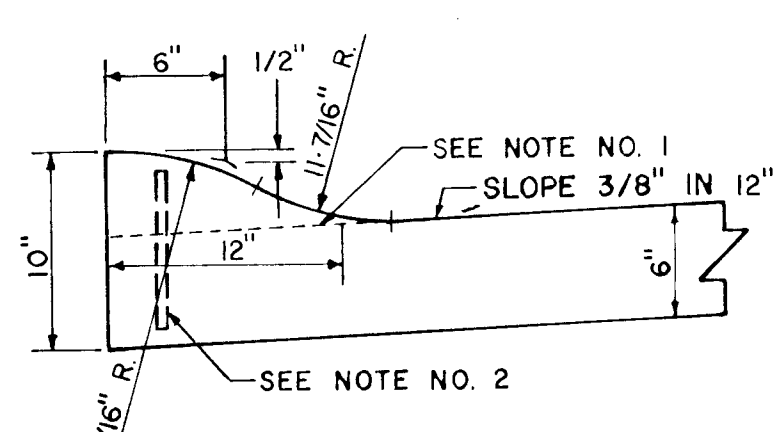


TYPICAL SECTION
35' CONCRETE PAVEMENT (ALTERNATE)

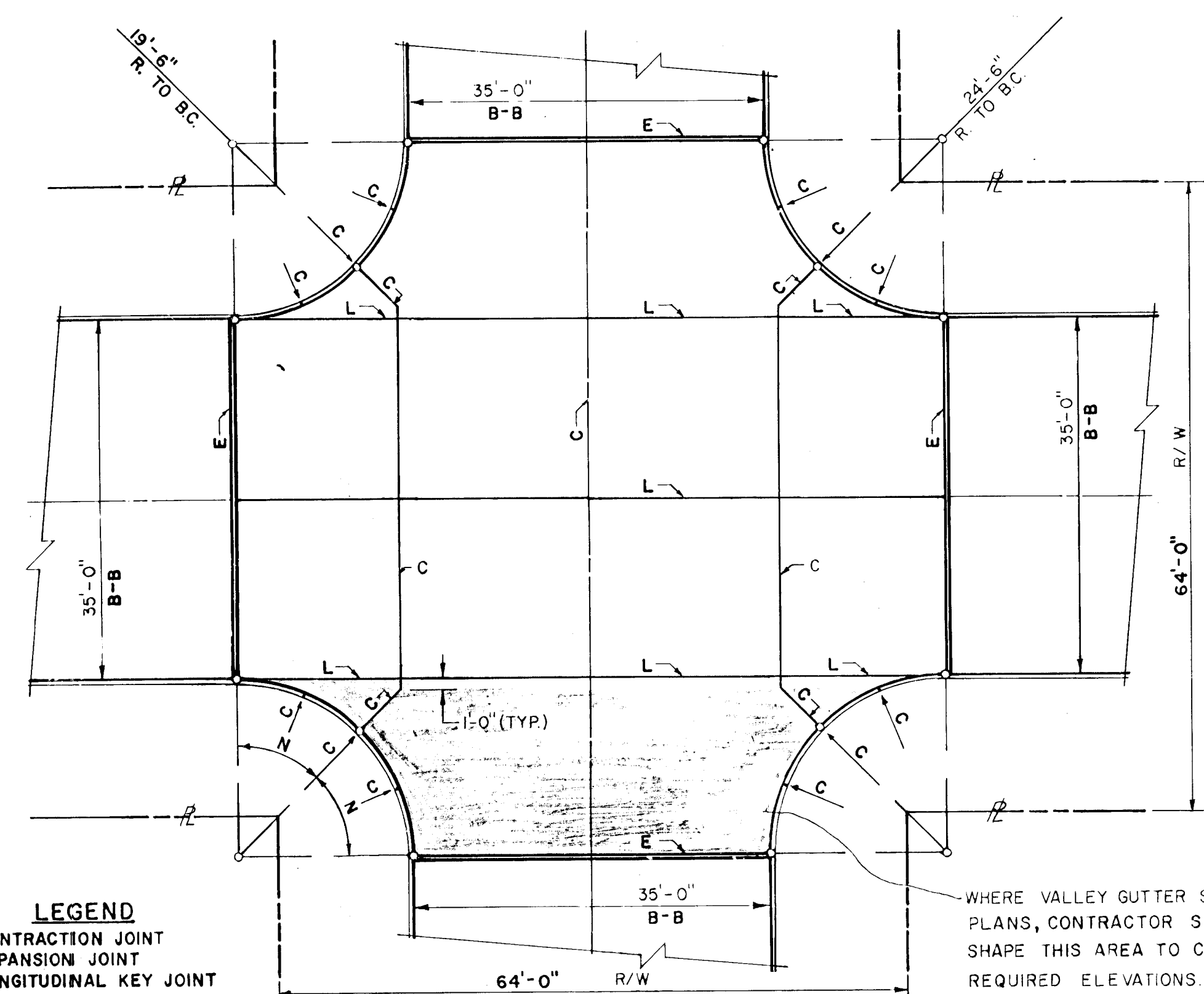
† NOTE: SLOPES INDICATED ARE FOR NORMAL CROWN SECTIONS, SEE SPOT ELEVATIONS FOR INTERSECTIONS, VALLEY GUTTER TRANSITIONS AND OTHER WARPED SECTIONS.



ROLL TYPE INTEGRAL CURB DETAIL

NOTES

- CONTRACTION JOINTS MAY BE CONSTRUCTED IN INTEGRAL CURB BY SAWING WITH AN APPROVED CONCRETE SAW. THE SAW CUT SHALL EXTEND THROUGH THE CURB TO THE PAVEMENT. SAWED CONTRACTION JOINTS SHALL HAVE A MAXIMUM SPACING OF 10'-0".
- SUBGRADE TREATMENT SHALL BE LIME MODIFICATION (CARBIDE LIME OR HYDRATED LIME).
- TREATED SUBGRADE SHALL HAVE A MINIMUM FIELD CBR OF 40 WHEN TESTED IN ACCORDANCE WITH MIL. STANDARD 621-A AND SHALL HAVE A MAXIMUM P.I. OF 6. THE IN-PLACE DENSITY SHALL BE NOT LESS THAN 97% OF THE MAXIMUM DRY DENSITY AS DETERMINED BY AASHTO T-180. MOISTURE CONTENT SHALL BE AT THE OPTIMUM MOISTURE CONTENT OR ABOVE.
- SEE SHEET NO. 7 FOR DEPRESSED CURB DETAILS.
- CONTRACTOR SHALL SUBMIT JOINT LOCATION DIAGRAMS TO THE ENGINEER FOR APPROVAL PRIOR TO START OF PAVING CONSTRUCTION.

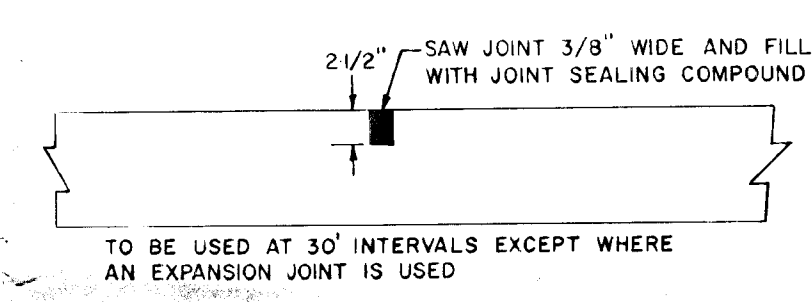


LEGEND
C=CONTRACTION JOINT
E=EXPANSION JOINT
L=LONGITUDINAL KEY JOINT
N=THE DIMENSION SHALL BISECT THE ARC

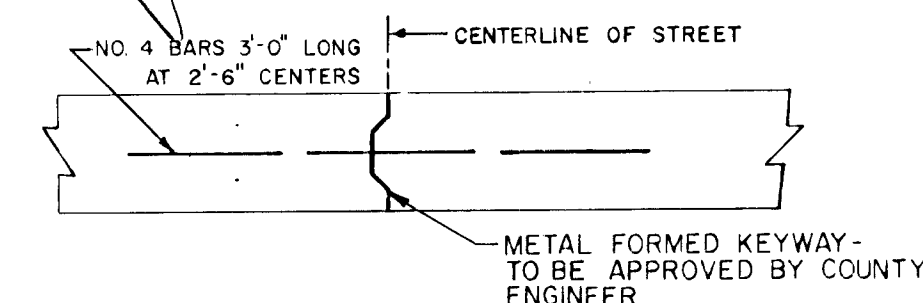
WHERE VALLEY GUTTER SHOWN ON PLANS, CONTRACTOR SHALL HAND SHAPE THIS AREA TO CONFORM TO REQUIRED ELEVATIONS. PAYMENT FOR THIS AREA IS INCLUDED IN "6" CONCRETE PAVEMENT" NO SEPARATE PAYMENT WILL BE MADE FOR VALLEY GUTTER IF THE PCC ALTERNATE BID IS CHOSEN.

CONCRETE INTERSECTION

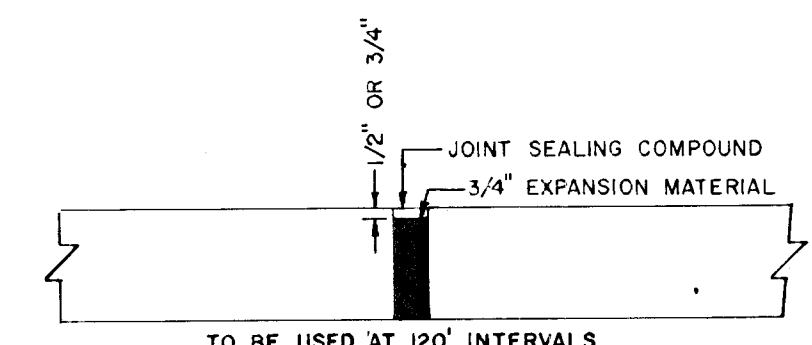
APPROVED AS NOTED
By CITY ENGINEER OF WICHITA
Sanitary Sewers
Storm Sewers
Driveway Approaches
Part Details 3/10/78



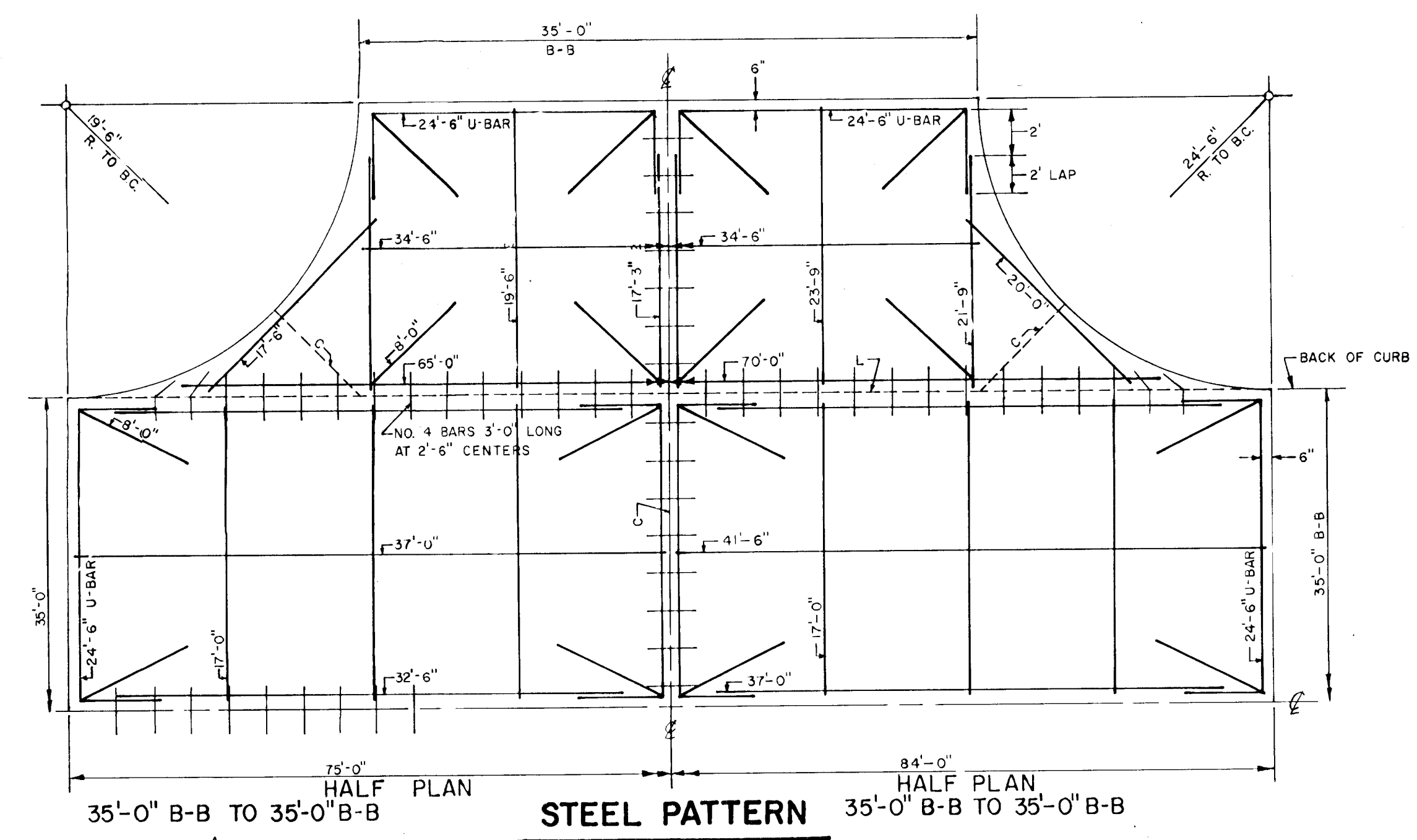
CONTRACTION JOINT DETAIL



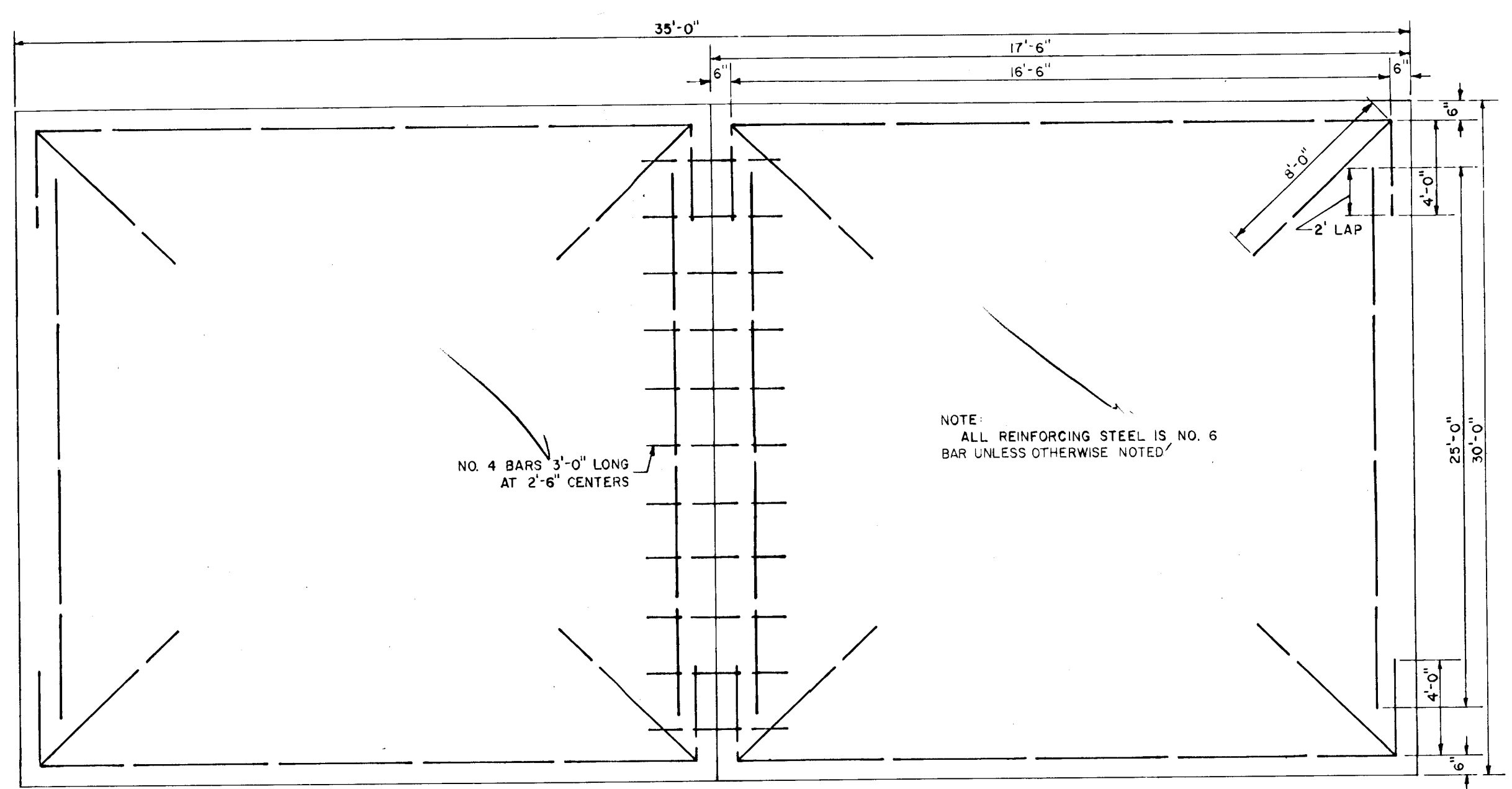
KEY JOINT DETAIL



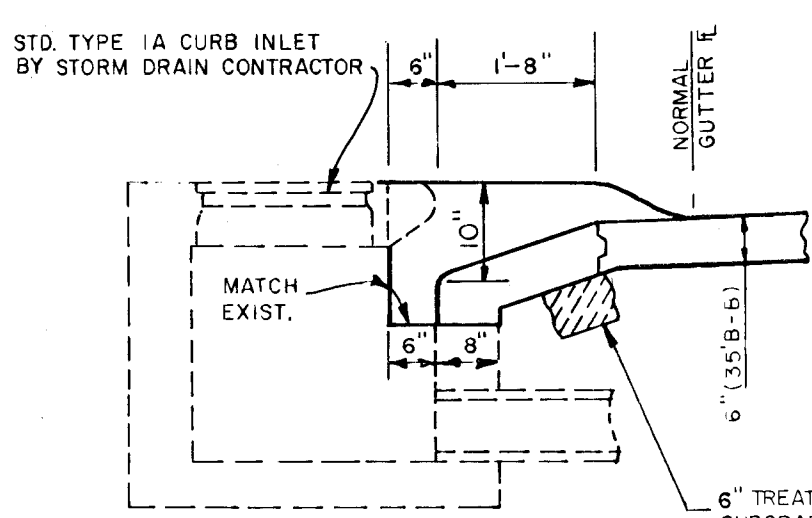
EXPANSION JOINT DETAIL



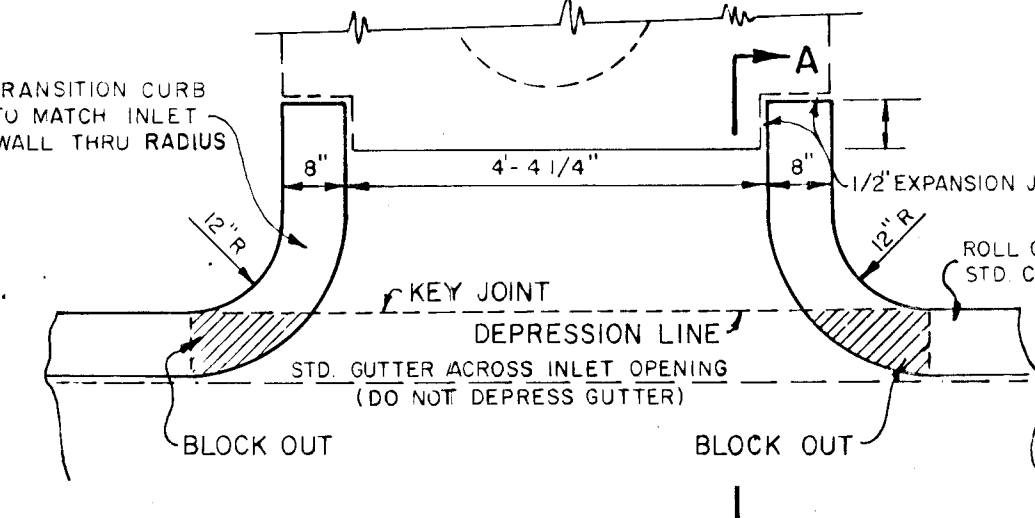
STEEL PATTERN INTERSECTION



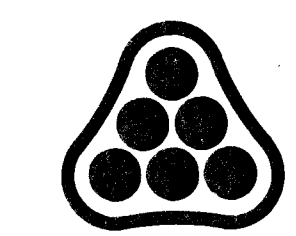
STEEL PATTERN
NO SCALE



SECTION A-A



INLET CONNECTION DETAIL



1 <i>Pavement Details</i>		<i>3/10/78</i>	
No.	Rev.	Date	
SEDGWICK COUNTY DEPARTMENT OF PUBLIC WORKS G.C. McLURE, JR., RE. DIRECTOR & COUNTY ENGINEER			
CONCRETE PAVEMENT DETAILS PART B			
STREET IMPROVEMENTS - PHASE I ARBOR LAKES ESTATES TO SEDGWICK COUNTY, KANSAS			
PROFESSIONAL ENGINEERING CONSULTANTS, P.A. ENGINEERS WICHITA, KANSAS			
Designed by	Job No. 76303-3	Sht. 8	of 25
Drawn by	Date		