

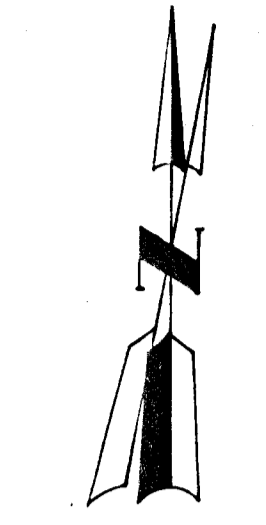
SKETCH PLAT
ALPHA-TWO ADDITION
 TO SEDGWICK COUNTY, KANSAS

Owner: Kansas Gas & Electric Co.
 (Out of Zoning)

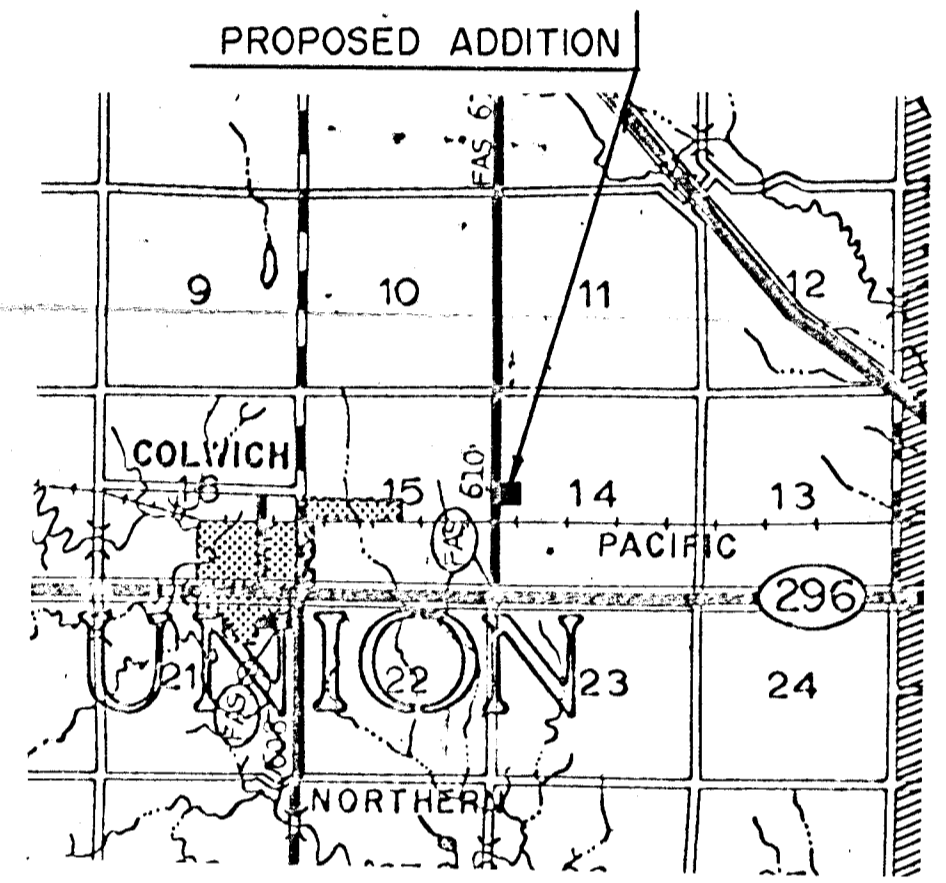
Owner: Kansas Gas & Electric Co.
 (Out of Zoning)

OWNER: Board of Fire Commissioners
 SEDGWICK COUNTY, KANSAS

PREPARED BY:
 SEDGWICK COUNTY DEPT. OF PUBLIC WORKS
 1015 STILLWELL, WICHITA, KANSAS

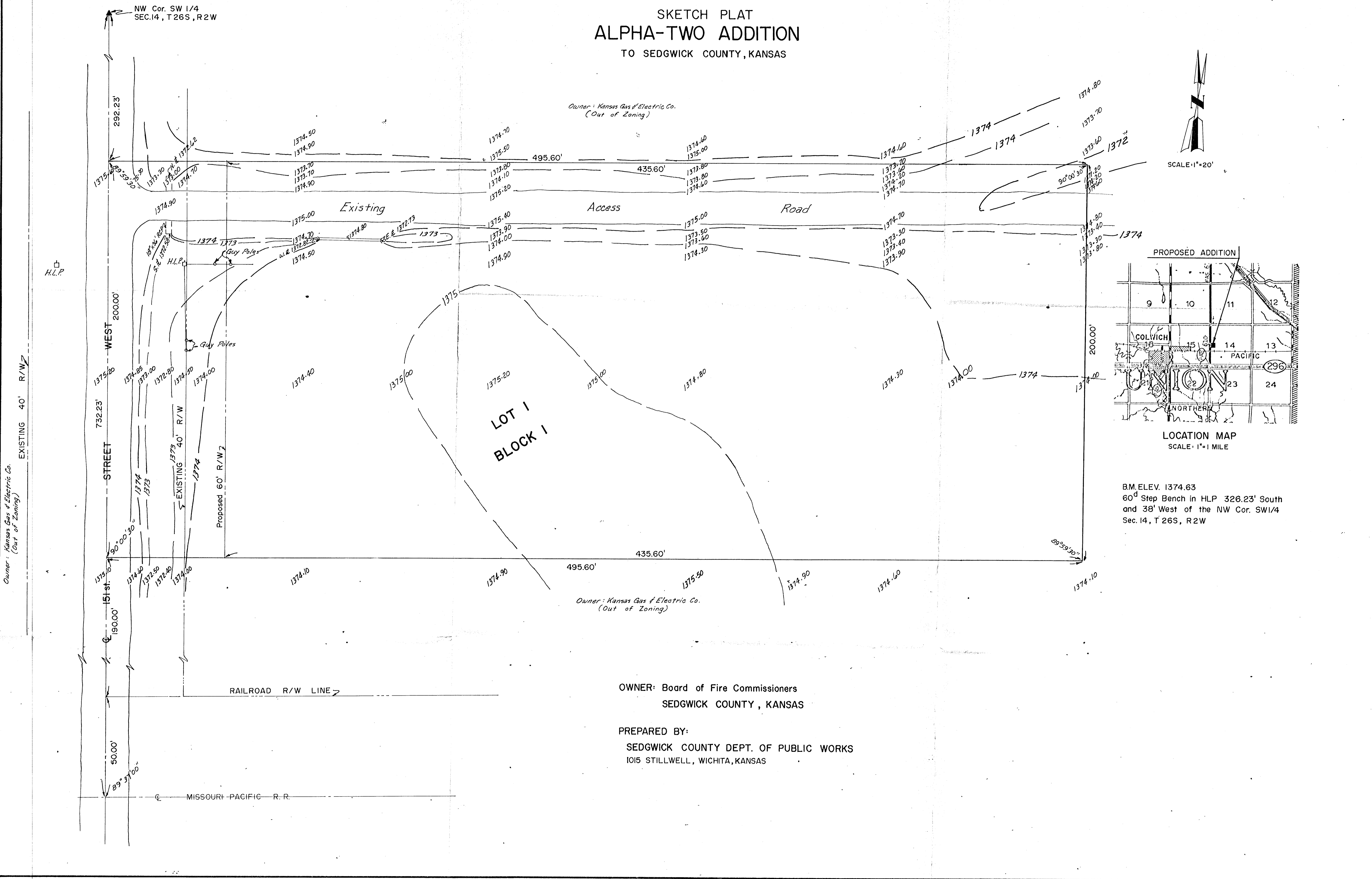


SCALE: 1" = 20'



LOCATION MAP
 SCALE: 1" = 1 MILE

B.M. ELEV. 1374.63
 60° Step Bench in H.L.P. 326.23' South
 and 38' West of the NW Cor. SW1/4
 Sec. 14, T 26S, R 2W



Owner: Kansas Gas & Electric Co.
 (Out of Zoning)

EXISTING 40' R/W

NW Cor. SW 1/4
 SEC. 14, T 26S, R 2W

WEST 200.00'

STREET WEST 200.00'

EXISTING 40' R/W

Proposed 60' R/W

RAILROAD R/W LINE

MISSOURI PACIFIC R.R.

Existing

Access

Road

LOT 1
 BLOCK 1

H.L.P.

H.L.P.

Guy Poles

Guy Poles

292.23'

732.23'

190.00'

50.00'

1375.50

1374.90

1374.85

1373.00

1374.00

1374.40

89° 37' 00"

1374.70

1375.00

1374.80

1374.00

1374.00

1374.00

1374.00

1374.90

1374.70

1374.80

1374.00

1374.00

1374.00

1374.00

1374.90

1375.00

1374.80

1374.00

1374.00

1374.00

1374.00

1374.50

1374.90

1374.85

1373.00

1374.00

1374.40

1374.00

1374.90

1375.00

1374.80

1374.00

1374.00

1374.00

1374.00

1374.50

1374.90

1374.85

1373.00

1374.00

1374.40

1374.00

1374.90

1375.00

1374.80

1374.00

1374.00

1374.00

1374.00

1374.50

1374.90

1374.85

1373.00

1374.00

1374.40

1374.00

1374.90

1375.00

1374.80

1374.00

1374.00

1374.00

1374.00

1374.50

1374.90

1374.85

1373.00

1374.00

1374.40

1374.00

1374.90

1375.00

1374.80

1374.00

1374.00

1374.00

1374.00

1374.50

1374.90

1374.85

1373.00

1374.00

1374.40

1374.00

1374.90

1375.00

1374.80

1374.00

1374.00

1374.00

1374.00

1374.50

1374.90

1374.85

1373.00

1374.00

1374.40

1374.00

1374.90

1375.00

1374.80

1374.00

1374.00

1374.00

1374.00

1374.50

1374.90

1374.85

1373.00

1374.00

1374.40

1374.00

1374.90

1375.00

1374.80

1374.00

1374.00

1374.00

1374.00

1374.50

1374.90

1374.85

1373.00

1374.00

1374.40

1374.00

1374.90

1375.00

1374.80

1374.00

1374.00

1374.00

1374.00

1374.50

1374.90

1374.85

1373.00

1374.00

1374.40

1374.00

1374.90

1375.00

1374.80

1374.00

1374.00

1374.00

1374.00

1374.50

1374.90

1374.85

1373.00

1374.00

1374.40

1374.00

1374.90

1375.00

1374.80

1374.00

1374.00

1374.00

1374.00

1374.50

1374.90

1374.85

1373.00

1374.00

1374.40

1374.00

1374.90

1375.00

1374.80

1374.00

1374.00

1374.00

1374.00

1374.50

1374.90

1374.85

1373.00

1374.00

1374.40

1374.00

1374.90

1375.00

1374.80

1374.00

1374.00

1374.00

1374.00

1374.50

1374.90

1374.85

1373.00

1374.00

1374.40

1374.00

1374.90

1375.00

1374.80

1374.00

1374.00

1374.00

1374.00

1374.50

1374.90

1374.85

1373.00

1374.00

1374.40

1374.00

1374.90

1375.00

1374.80

1374.00

1374.00

1374.00

1374.00

1374.50

1374.90

1374.85

1373.00

1374.00

1374.40

1374.00

1374.90

1375.00

1374.80

1374.00

1374.00

1374.00

1374.00

1374.50

1374.90

1374.85

1373.00

1374.00