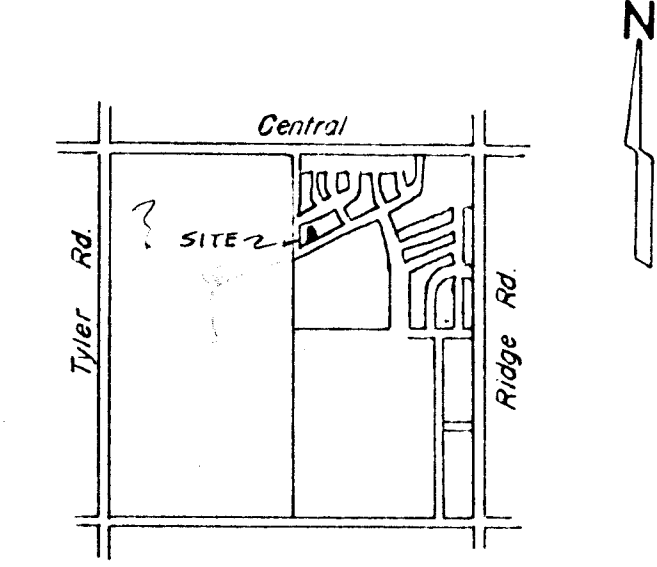
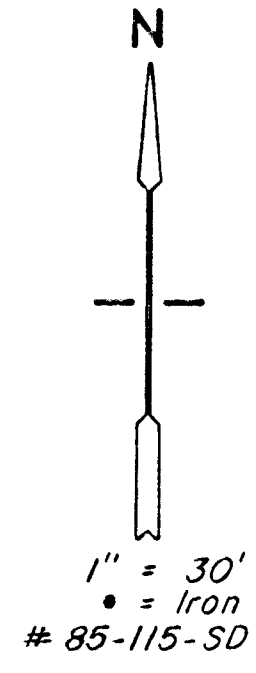


PRELIMINARY PLAT
of
ALMOND TREE ADDITION
To Wichita, Sedgwick Co, Ks.



- LEGEND-**
- S.S. = Sanitary Sewer
 - W = Water Main
 - G = Gas Main
 - T.C. = Top of Curb
 - FL. = Flow Line
 - 47.8 = Spot Elevation
 - S.W.S. = Storm Water Sewer

Note - Telephone & Electric Service
Not Yet Extended To Lot 6.

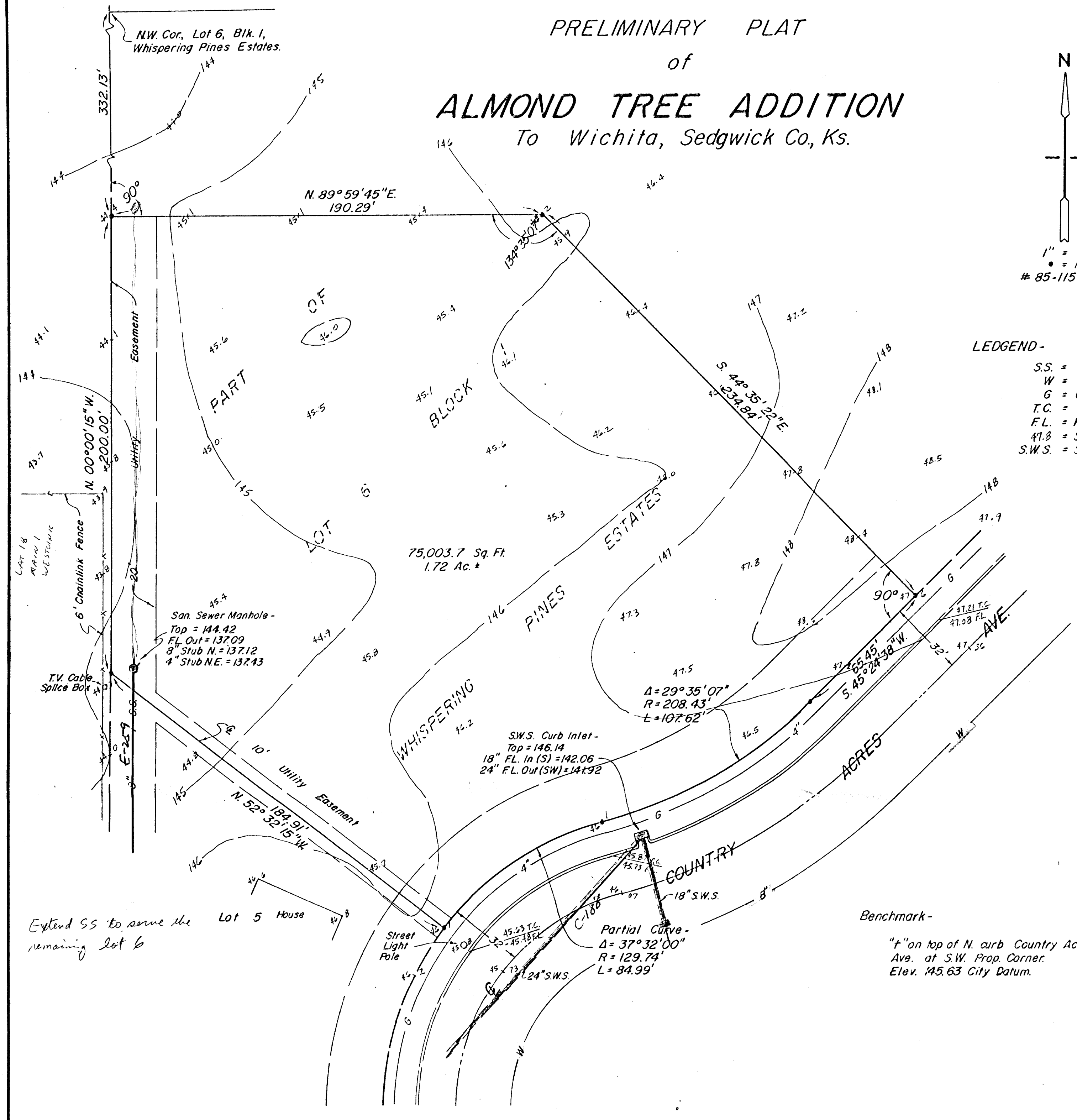
Legal Description -

PART OF LOT 6, BLOCK 1, WHISPERING PINES ESTATES, WICHITA, SEDGWICK COUNTY, KANSAS, DESCRIBED AS BEGINNING AT A POINT IN THE WEST LINE AND 332.13' SOUTH OF THE NORTHWEST CORNER OF SAID LOT 6; THENCE EAST AT AN INCLUDED ANGLE OF 90°00'00", A DISTANCE OF 190.29'; THENCE SOUTHEASTERLY AT AN INCLUDED ANGLE OF 134°35'07", A DISTANCE OF 234.84'; THENCE SOUTHWESTERLY AT AN INCLUDED ANGLE OF 90°00'00", A DISTANCE OF 65.45' TO THE P.C. OF A CURVE TO THE RIGHT HAVING A RADIUS OF 208.43'; THENCE ALONG SAID CURVE TO THE RIGHT AND THROUGH A CENTRAL ANGLE OF 29°35'07", A DISTANCE OF 107.62' TO THE P.T. OF SAID CURVE AND THE P.C. OF A CURVE TO THE LEFT HAVING A RADIUS OF 129.74'; THENCE ALONG SAID CURVE TO THE LEFT AND THROUGH A CENTRAL ANGLE OF 37°32'00", A DISTANCE OF 84.99'; THENCE NORTHWESTERLY ALONG THE SOUTHWESTERLY SIDE OF SAID LOT 6, A DISTANCE OF 184.91' TO A POINT IN THE WEST LINE OF SAID LOT 6; THENCE NORTH 200.00' TO THE POINT OF BEGINNING.

Benchmark-
"f" on top of N. curb Country Acres
Ave. at S.W. Prop. Corner.
Elev. 145.63 City Datum.



MOEHRING & ASSOCIATES
CONSULTING ENGINEERS
WICHITA
Oct. 11, 1985



Extend SS to serve the
remaining lot 6

Lot 5 House

Street
Light
Pole

Partial Curve -
Delta = 37°32'00"
R = 129.74'
L = 84.99'