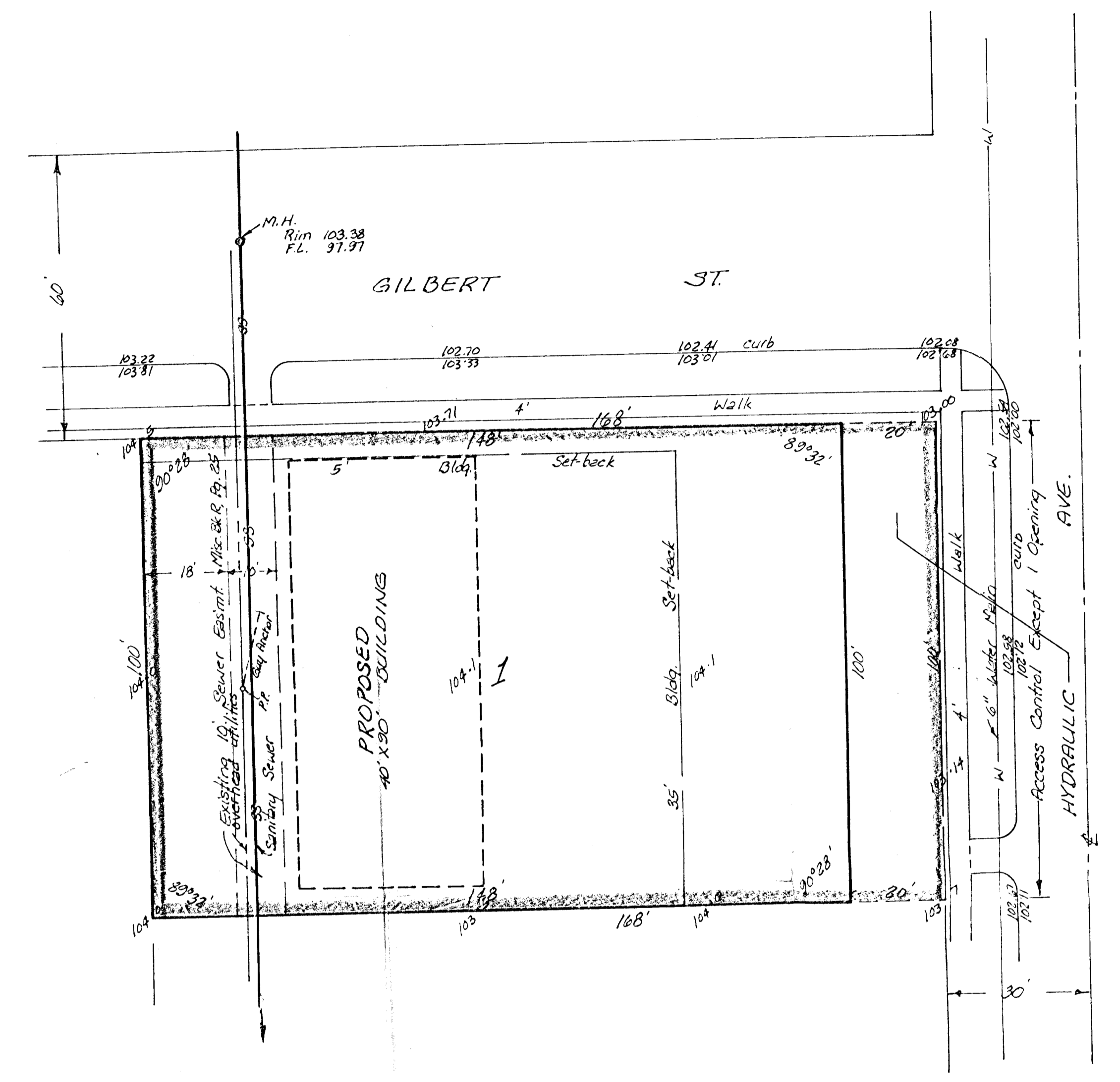


D-42, Dist. 9
 S S No. 20

N
 ↑
 1" = 20'
 Elev. = City Datum

BENCH MARK:
 Top of curb N. side of
 Indianapolis St. 50' W.
 of the W. line of Hydraulic
 Elev. = 103.17 City Datum



SKETCH PLAT
DAY ADDITION

LOTS 1, 2, 3 AND 4, SALISBURY
 ADDITION TO WICHITA, KANSAS.

GARY DAY