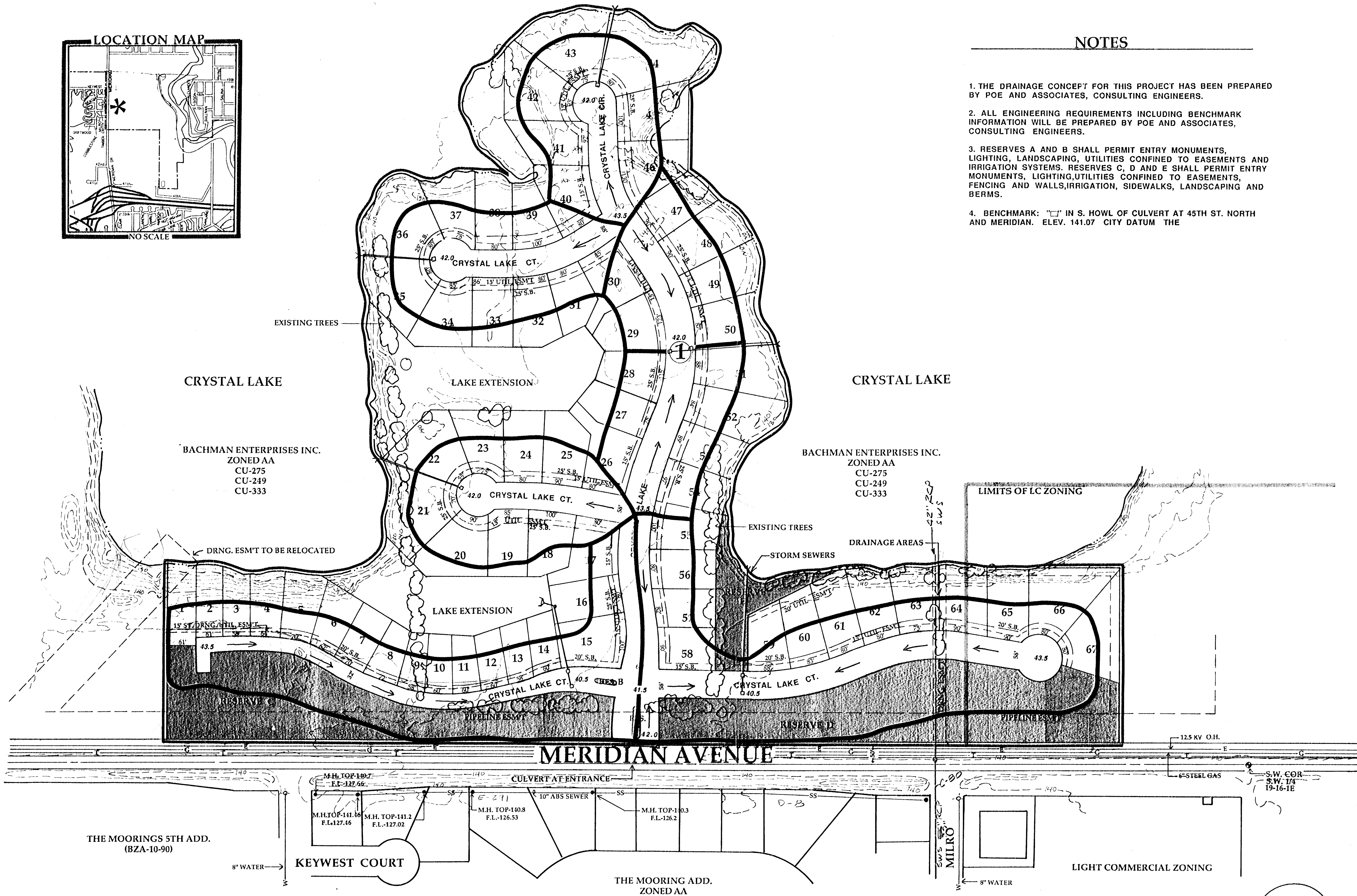


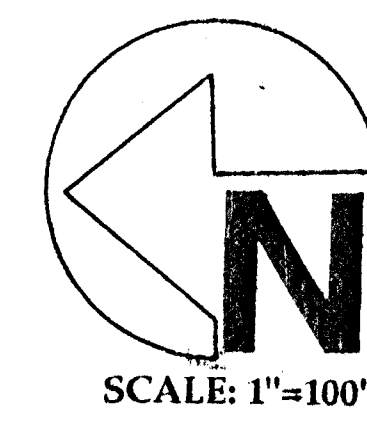
**NOTES**

1. THE DRAINAGE CONCEPT FOR THIS PROJECT HAS BEEN PREPARED BY POE AND ASSOCIATES, CONSULTING ENGINEERS.
2. ALL ENGINEERING REQUIREMENTS INCLUDING BENCHMARK INFORMATION WILL BE PREPARED BY POE AND ASSOCIATES, CONSULTING ENGINEERS.
3. RESERVES A AND B SHALL PERMIT ENTRY MONUMENTS, LIGHTING, LANDSCAPING, UTILITIES CONFINED TO EASEMENTS AND IRRIGATION SYSTEMS. RESERVES C, D AND E SHALL PERMIT ENTRY MONUMENTS, LIGHTING, UTILITIES CONFINED TO EASEMENTS, FENCING AND WALLS, IRRIGATION, SIDEWALKS, LANDSCAPING AND BERMS.
4. BENCHMARK: "C" IN S. HOWL OF CULVERT AT 45TH ST. NORTH AND MERIDIAN. ELEV. 141.07 CITY DATUM THE

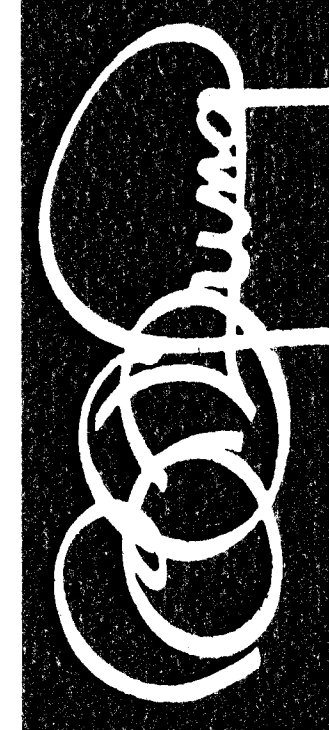


**PRELIMINARY PLAT  
CRYSTAL LAKE**

**DRAINAGE CONCEPT  
BY POE AND ASSOCIATES OF  
KANSAS, INC. 8-16-93**



OWNER: BRAD BACHMAN CONSTRUCTION INC. 4833 PORTWEST CIRCLE, WICHITA, KANSAS 67204 PH. (316) 838-7034 FAX (316) 838-6789



**BILL G. YUNG DESIGN**  
WICHITA, KS 67220  
4812 E. 25TH STREET NORTH  
316-838-6567

SHEET TITLE PRELIMINARY PLAT DATE 8-19-93  
REV.

PROJECT CRYSTAL LAKE  
SHEET OF