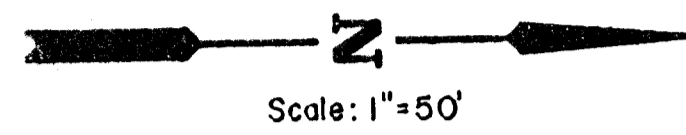
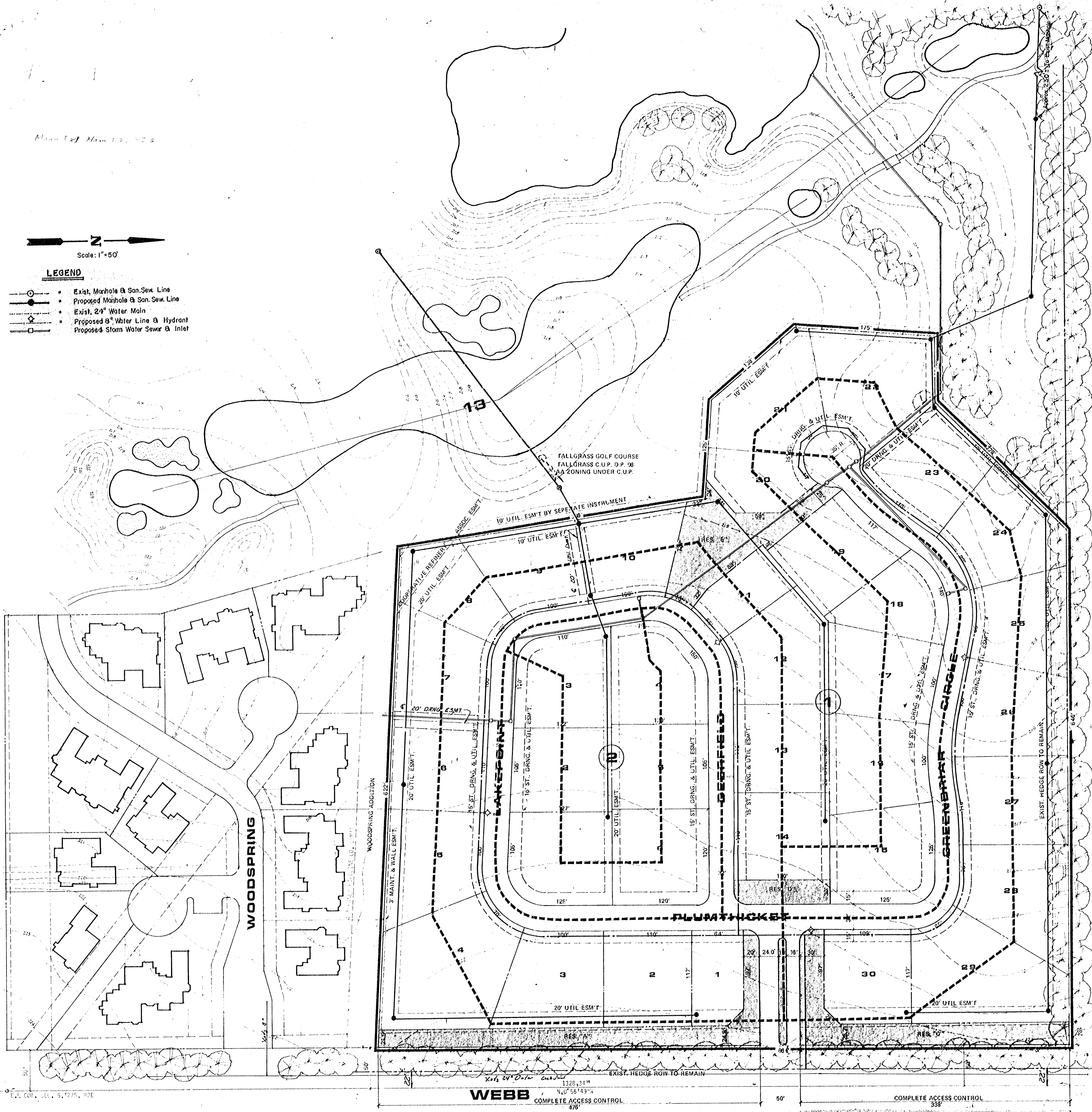


Main Text March 22, 2005



LEGEND

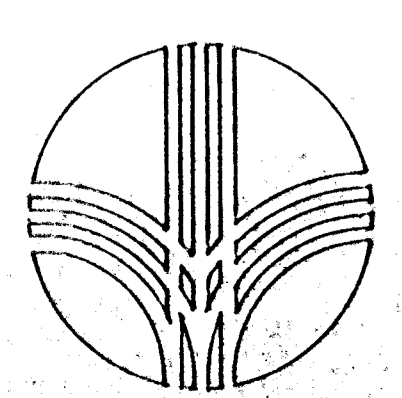
- Existing Manhole @ San. Sew. Line
- Proposed Manhole @ San. Sew. Line
- Existing 24" Water Main
- Existing 8" Water Line @ Hydrant
- Proposed Storm Water Sewer @ Inlet



E.I. COPI, JULY 5, 1975, RPE

WEBB COMPLETE ACCESS CONTROL 478'

COMPLETE ACCESS CONTROL 338'



DEERFIELD

	DRAINAGE CONCEPT & UTILITY LAYOUT	Drawn by J.C.M. Checked by K.W.B. Date JULY 1, 2005 Project
	MID-KANSAS ENGINEERING CONSULTANTS PA 3800 N. ROCK ROAD BUILDING # 800 MICHIGAN, KANSAS 67209 682-6561	RESERV LANDSC RESERV AND IRF EXISTING 2005