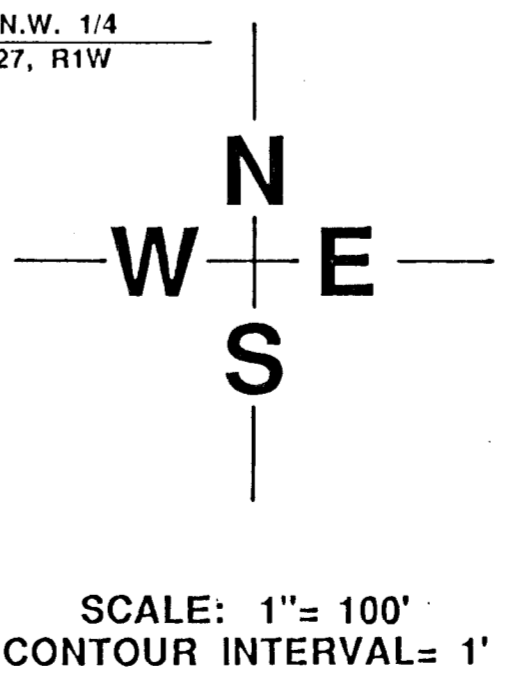


ANDERSON INVESTMENT INC.
UNPLATTED
ZONED AA UNDER C.U.P., D.P.-152

NOTES

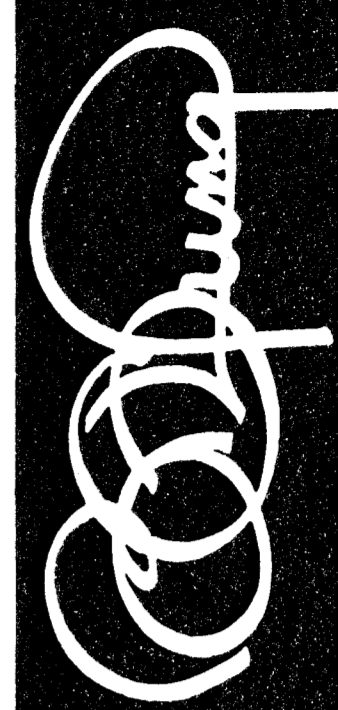
- 1) BENCHMARK: MAIZE AND 9TH STREET NORTH, CITY OF WICHITA DISC. 32' NORTH AND 38' EAST OF QUARTER SECTION CORNER. ELEV.- 152.283 CITY DATUM.
- 2) ZONED AA UNDER HUNTINGTON PLACE C.U.P., D.P.-152.
- 3) DRAINAGE CONCEPT PLAN TO BE PREPARED BY BAUGHMAN COMPANY.
- 4) RESERVE "A" TO PERMIT DRAINAGE, DRAINAGE STRUCTURES, LAKES, LANDSCAPING, SIDEWALKS, GAZEBO'S, RECREATION FACILITIES, AND UTILITIES CONFINED TO EASEMENTS.



LOCATION MAP

PRELIMINARY PLAT
ARLINGTON PLACE 2ND ADDITION

OWNER: ARLINGTON PLACE INC., 1147 COACH HOUSE COURT, WICHITA, KANSAS 67235



BILL G. YUNG DESIGN
WICHITA, KS. 67220
4912 E. 25TH STREET NORTH
316-685-5567

DATE: JULY 25, 1991
REV.

SHEET TITLE: PRELIMINARY PLAT

PROJECT: ARLINGTON PLACE 2ND ADDITION

SHEET OF