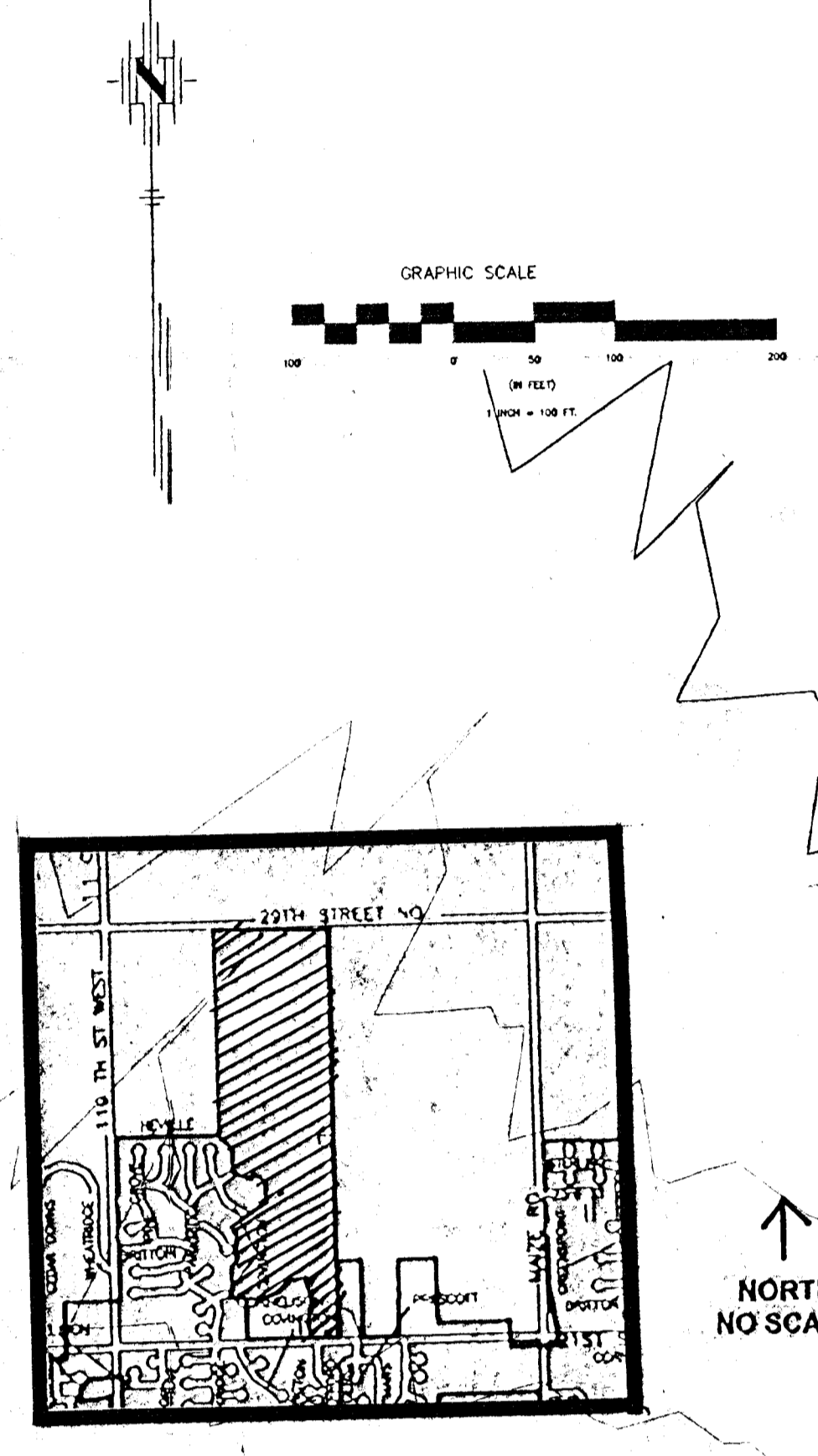
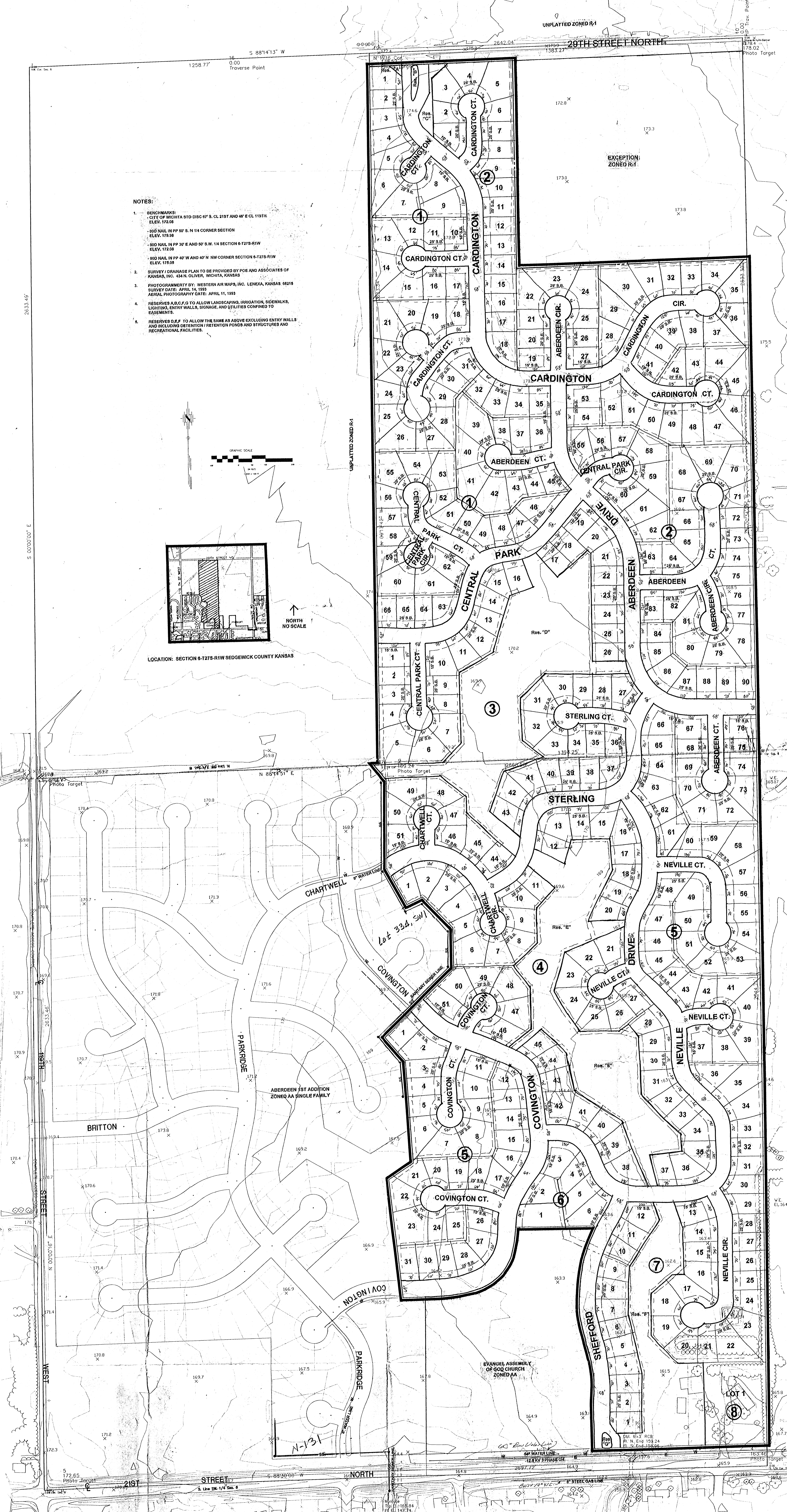


NOTES:

- BENCHMARKS:
 - CITY OF WICHITA STD DISC 87 S. CL 21ST AND 40' E CL 1193TH. ELEV. 172.08
 - 800 NAIL IN PP 50' S. N 1/4 CORNER SECTION. ELEV. 173.08
 - 800 NAIL IN PP 30' E AND 30' S. W. 1/4 SECTION 8-T278-R1W. ELEV. 172.08
 - 800 NAIL IN PP 40' W AND 40' N NW CORNER SECTION 8-T278-R1W. ELEV. 173.08
- SURVEY DRAINAGE PLAN TO BE PROVIDED BY POG AND ASSOCIATES OF KANSAS, INC. 434 N. OLIVER, WICHITA, KANSAS
- PHOTOGRAMMETRY BY: WESTERN AIR MAPS, INC. LENEXA, KANSAS 66219. SURVEY DATE: APRIL 14, 1993. AERIAL PHOTOGRAPHY DATE: APRIL 11, 1993
- RESERVES A,B,C,D TO ALLOW LANDSCAPING, IRRIGATION, SIDEWALKS, LIGHTING, ENTRY WALLS, SIGNAGE, AND UTILITIES CONFINED TO EASEMENTS.
- RESERVES D,E,F TO ALLOW THE SAME AS ABOVE EXCLUDING ENTRY WALLS AND INCLUDING DETENTION/RETENTION PONDS AND STRUCTURES AND RECREATIONAL FACILITIES.

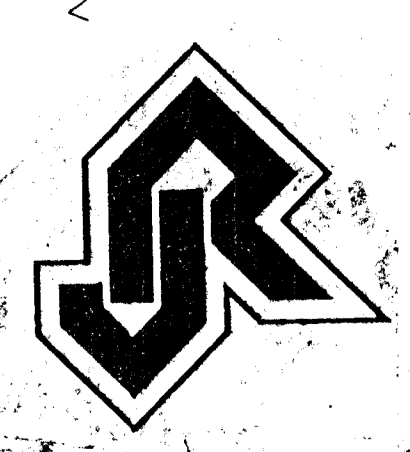


LOCATION: SECTION 8-T278-R1W SEDGWICK COUNTY KANSAS



PRELIMINARY PLAT
ABERDEEN 2ND ADDITION

DATE: APRIL 1, 1998



RUSSELL
 HOMES

OWNER: 3417 COOP, 465 N. MAZER ROAD, WICHITA, KANSAS 67217. (316) 722-2117