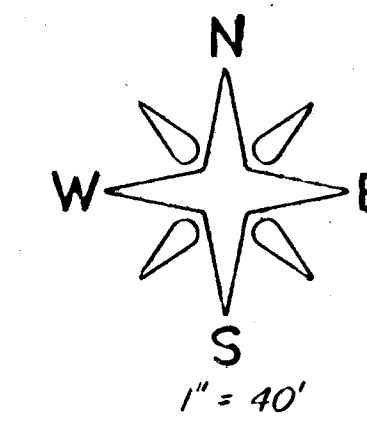


DRAINAGE PLAN
for
PRELIMINARY PLAT
of
de PAUL ADDITION
Wichita, Kansas

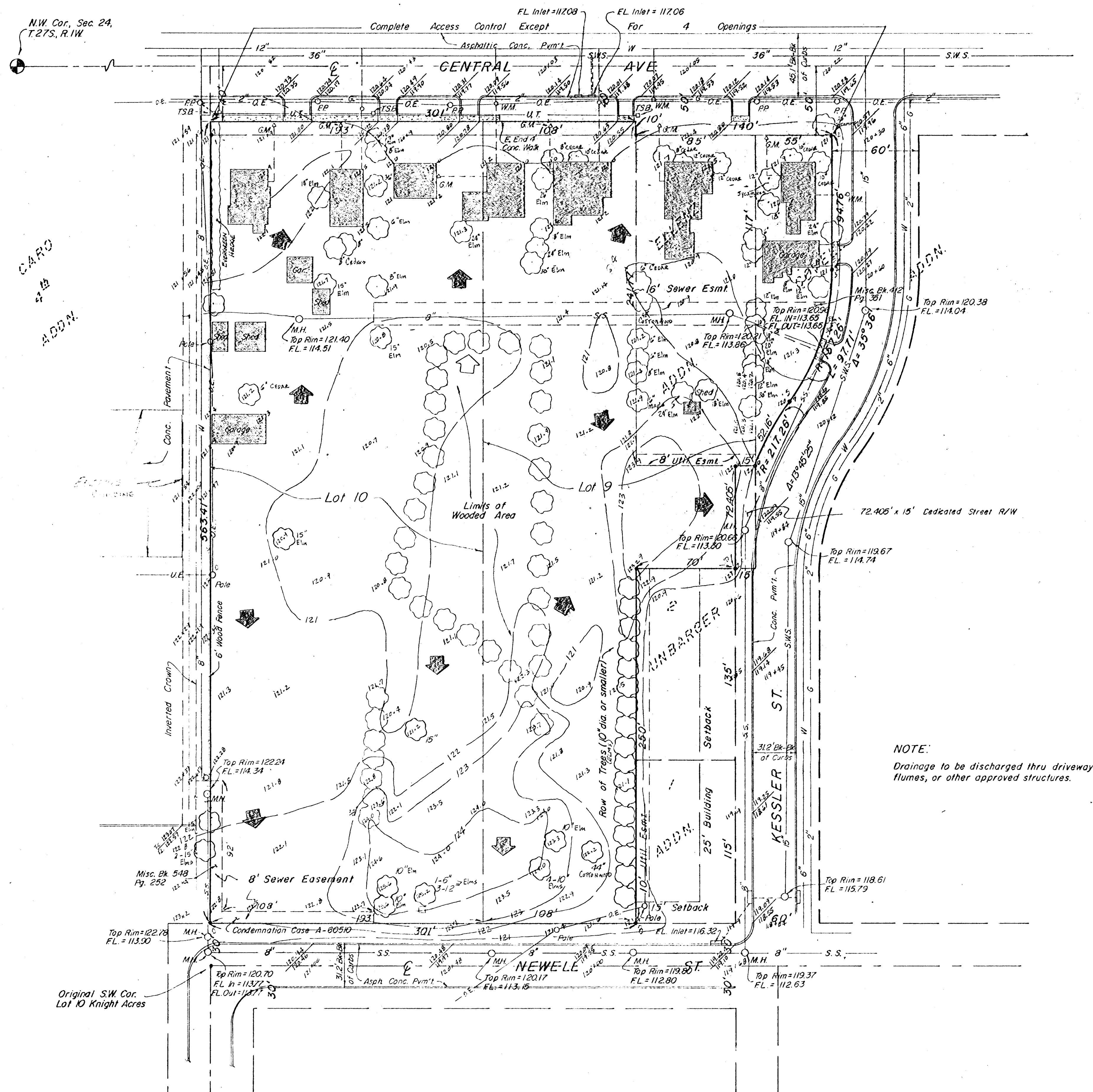


LEGEND:

- (Δ) G.M. = Gas Meter
- (○) W.M. = Water Meter
- PP = Power Pole
- O.E. = Overhead Electric
- U.T. = Underground Telephone
- W = Water Main
- G = Gas Main
- S.S. = Sanitary Sewer
- S.W.S. = Storm Water Sewer
- 11.1 = Spot Elevation
- M.H. = Manhole
- (□) T.S.B. = Telephone Splice Box

LEGAL DESCRIPTION

LOT 10, EXCEPT THE NORTH 15.0' AND EXCEPT THE SOUTH 30.0', THEREOF; LOT 9, EXCEPT THE EAST 85.0' OF THE SOUTH 230.0', ALSO EXCEPT THE EAST 85.0' OF THE NORTH 256.77', ALSO EXCEPT THE NORTH 15.0' AND THE SOUTH 30.0' THEREOF, IN KNIGHT ACRES ADDITION, TOGETHER WITH LOT 1, ELLIOTT ADDITION AND LOT 1, COVELLE ADDITION, WICHITA, SEDGWICK COUNTY, KANSAS.

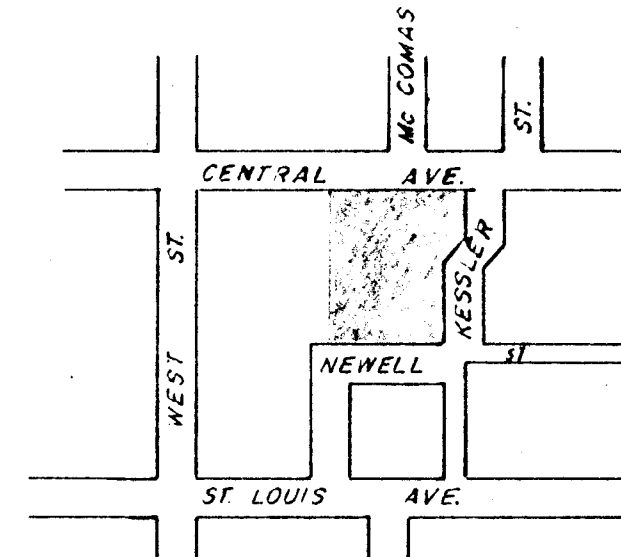


NOTE:
Drainage to be discharged thru driveways, flumes, or other approved structures.

BENCHMARK:

□ on top of E. curb McComas St,
129.6' N. of E. Central Ave.
Elev. 120.15' City Datum.

MOEHRING & ASSOCIATES
CONSULTING ENGINEERS
WICHITA
Revised Feb. 28, 1985



VICINITY MAP
NOT TO SCALE