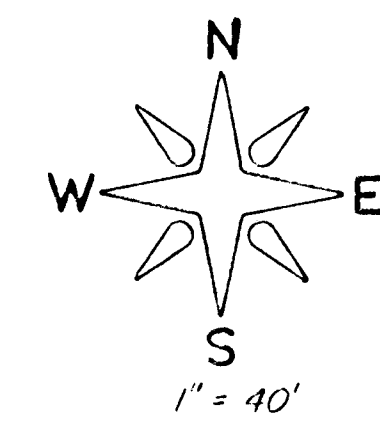


PRELIMINARY PLAT
of
de PAUL ADDITION
Wichita, Kansas

LEGAL DESCRIPTION

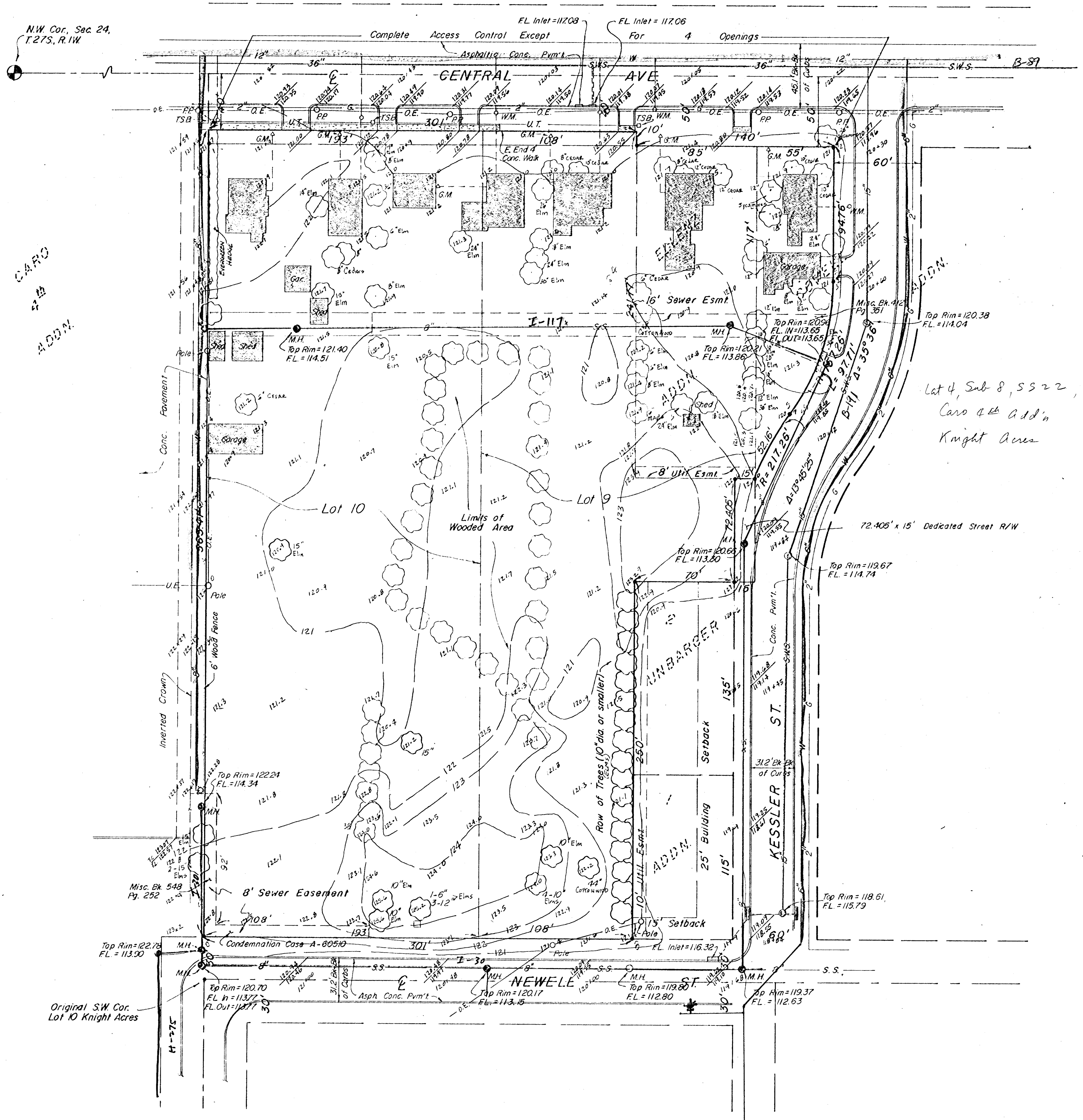
LOT 10, EXCEPT THE NORTH 15.0' AND EXCEPT THE SOUTH 30.0',
THEREOF; LOT 9, EXCEPT THE EAST 85.0' OF THE SOUTH 280.0',
ALSO EXCEPT THE EAST 85.0' OF THE NORTH 255.77', ALSO EXCEPT
THE NORTH 15.0' AND THE SOUTH 30.0' THEREOF, IN KNIGHT ACRES
ADDITION, TOGETHER WITH LOT 1, ELLENZ ADDITION AND LOT 1,
COVELLE ADDITION, WICHITA, SEDGWICK COUNTY, KANSAS.



291
512.0
378.6

LEGEND:

- (G.M.) = Gas Meter
- (W.M.) = Water Meter
- P.P. = Power Pole
- O.E. = Overhead Electric
- U.T. = Underground Telephone
- W = Water Main
- G = Gas Main
- S.S. = Sanitary Sewer
- S.W.S. = Storm Water Sewer
- St. E. = Spot Elevation
- M.H. = Manhole
- (TSB) = Telephone Splice Box

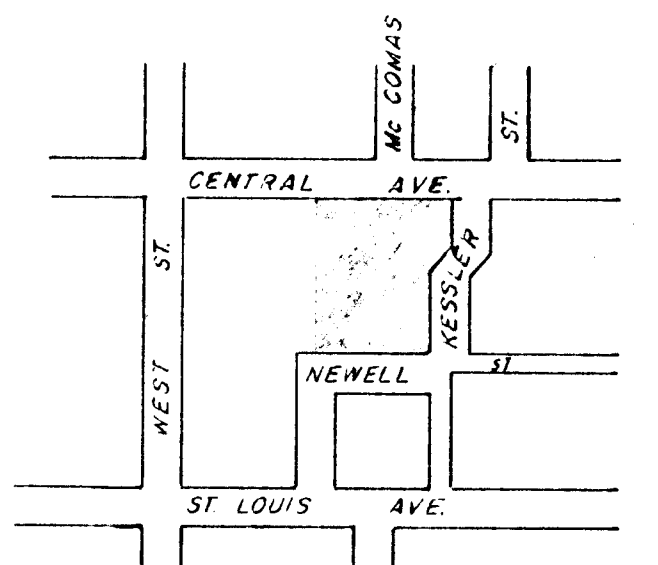


CARD
4th
ADDN.

Lot 4, Sub 8, S.S. 22
Card 4th Addn
Knight Acres

BENCHMARK:
□ on top of E. curb Mc Comas St,
129.6' N. of E. Central Ave.
Elev. 120.15 City Datum.

MOEHRING & ASSOCIATES
CONSULTING ENGINEERS
WICHITA
Revised Feb. 28, 1985



VICINITY MAP
NOT TO SCALE