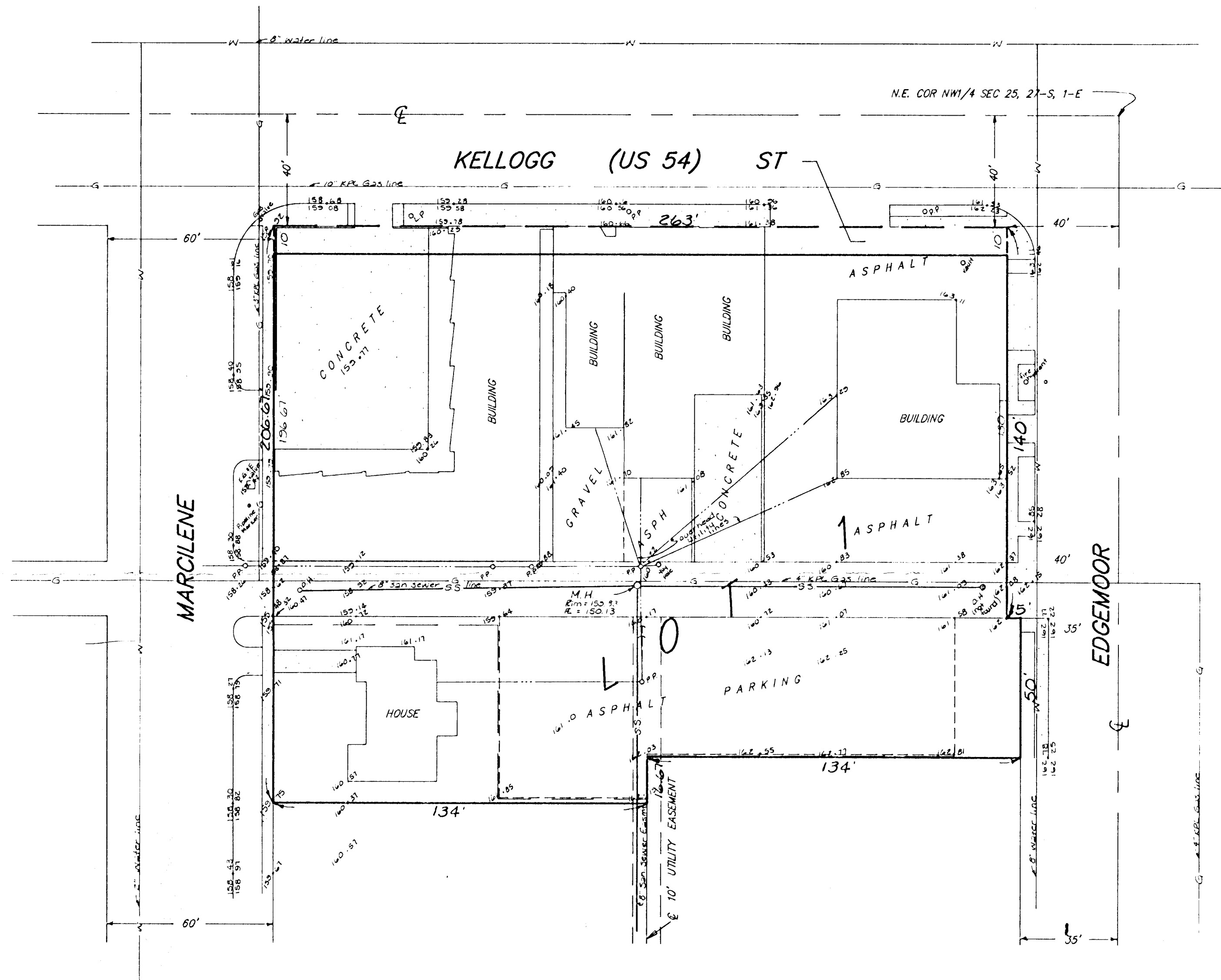


1" = 30'
ELEV = CITY DATUM

BENCH MARK:
SQUARE CUT TO OF CURB AT S. END OF S. CURB RETURN OF
ALLEY ON THE E. SIDE OF BEVERLEY DR. AND S. OF KELLOGG
ST. AT THE N.W. COR. OF LOT 12, BLK 2, BEVERLEY MANOR
ELEVATION = 1341.47 M.S.L. (154.07 CITY DATUM)



SKETCH PLAT
DAVIS-MOORE 8TH ADDITION

WICHITA, SEDGWICK COUNTY, KANSAS.

Lot 1, 2, 3, 4, 5, 6, 7, 8, 9, 10, 11, and the north 16.67 feet of Lot 12
and Lot 28, Block 1, Beverley Manor, Sedgwick County, Kansas.

T. G. DAVIS, JR.



BAUGHMAN COMPANY P. A.
SURVEYING & ENGINEERING
316/262-7271 • 315 ELLIS • WICHITA, KANSAS 67211

25 FEB 91