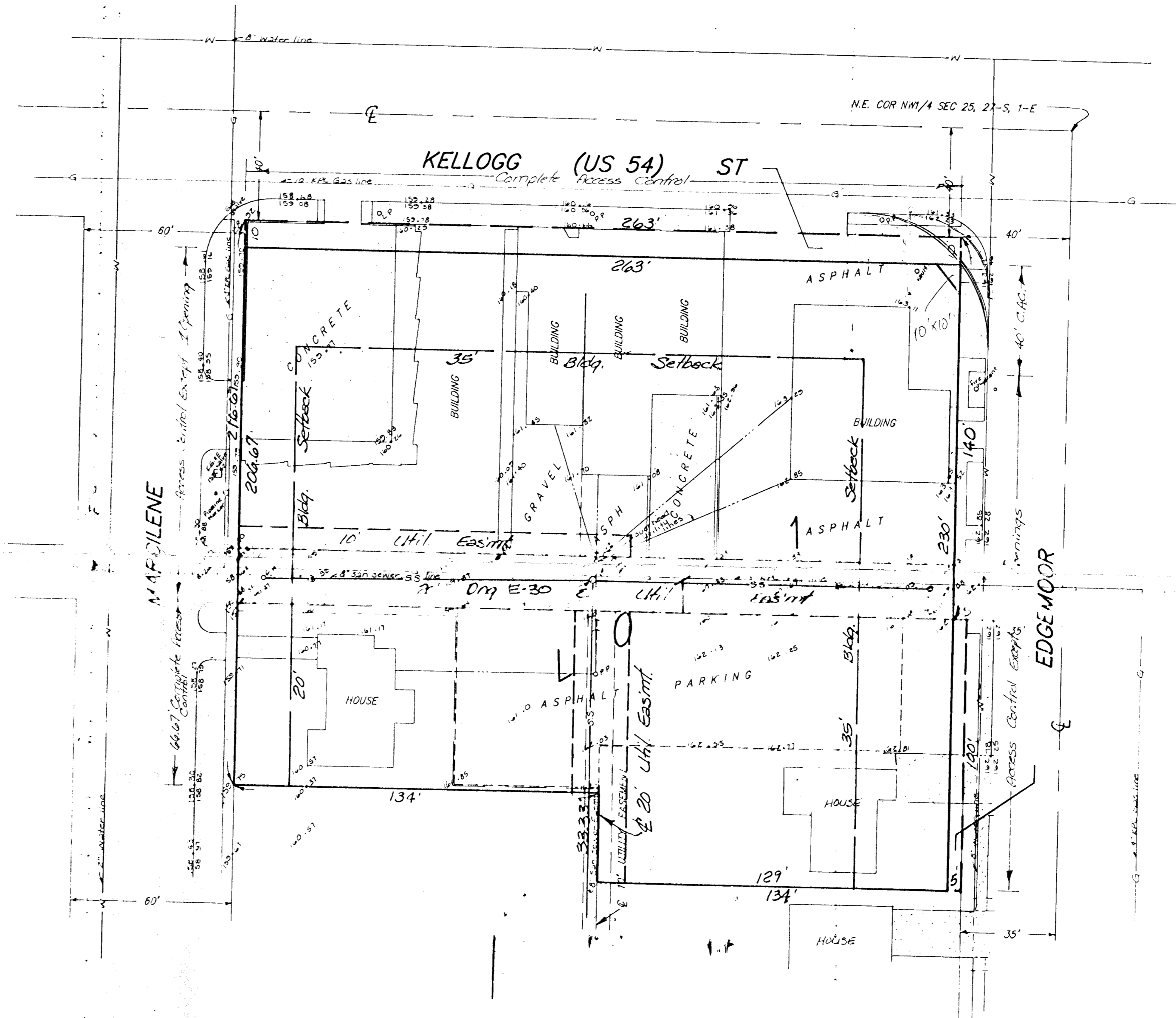




1" = 30'
ELEV. - CITY DATUM

BENCH MARK:
SQUARE OUT TO OF CURB AT S. END OF S. CURB RETURN OF
ALLEY ON THE E. SIDE OF BEVERLEY DR. AND S. OF KELLOGG
ST. AT THE N.W. COR OF LOT 12, BLK 2, BEVERLEY MANOR
ELEVATION = 1341.47 M.S.L. (134.07 CITY DATUM)



REVISED
SKETCH PLAT
DAVIS-MOORE 8TH ADDITION

WICHITA, SEDGWICK COUNTY, KANSAS,

Lot 1, 2, 3, 4, 5, 6, 7, 8, 9, 10, 11, and the north 16.67 feet of Lot 12
and Lot 28, Block 1, Beverley Manor, Sedgwick County, Kansas.

T. G. DAVIS, JR.