

# DAVIS-MOORE 8TH ADDITION

WICHITA, SEDGWICK COUNTY, KANSAS

State of Kansas) SS We, Baughman Company, P.A., Surveyors in  
Sedgwick County) Sedgwick County do hereby certify that we have surveyed  
and platted "DAVIS-MOORE 8TH ADDITION", Wichita, Sedgwick County,  
Kansas and that the accompanying plat is a true and correct exhibit  
of the property surveyed, described as and being a replat of Lots 1,  
2, 3, 4, 5, 6, 7, 8, 9, 10, 11, and the north 16.67 feet of Lot 12 and  
Lots 27 and 28, Block 1, Beverley manor, Sedgwick County, Kansas,  
together with all of the Alley adjacent thereto.  
Existing public easements and dedications being vacated by  
virtue of K.S.A. 12-512(b).  
All being situated in the NW1/4 of Sec. 25, Twp. 27-S, R-1-E of  
the 6th P.M., Sedgwick County, Kansas.

Baughman Company, P.A.

Date 8 July 1991

*Mark A. Schoy* Surveyor  
Mark A. Schoy

Know all men by these presents that we,  
the undersigned, have caused the land described in the surveyors  
certificate to be platted into a Lot to be known as "DAVIS-MOORE  
8TH ADDITION", Wichita, Sedgwick County, Kansas. The utility ease-  
ments are hereby granted as indicated for the construction and  
maintenance of all public utilities. The street is hereby dedicated to  
and for the use of the public. All abutters rights of access to or  
from Kellogg St. over and across the north line of Lot 1 and to or  
from Edgemoor over and across the east line of Lot 1 and to or  
from Marciene over and across the west line of Lot 1 are hereby  
granted to the City of Wichita, provided however that Lot 1 shall  
have access to Edgemoor at two locations over all except the north  
40 feet of the east line of Lot 1 and shall have access to Marciene  
at one location over all except the south 66.66 feet of the west line  
of Lot 1, as shall be determined by the City Engineer of the City of  
Wichita, Kansas. The contingent street dedication is hereby dedicat-  
ed to and for the use of the public contingent upon the commenc-  
ing of the construction of the improvements of the Kellogg and Oliver  
Street interchange project.

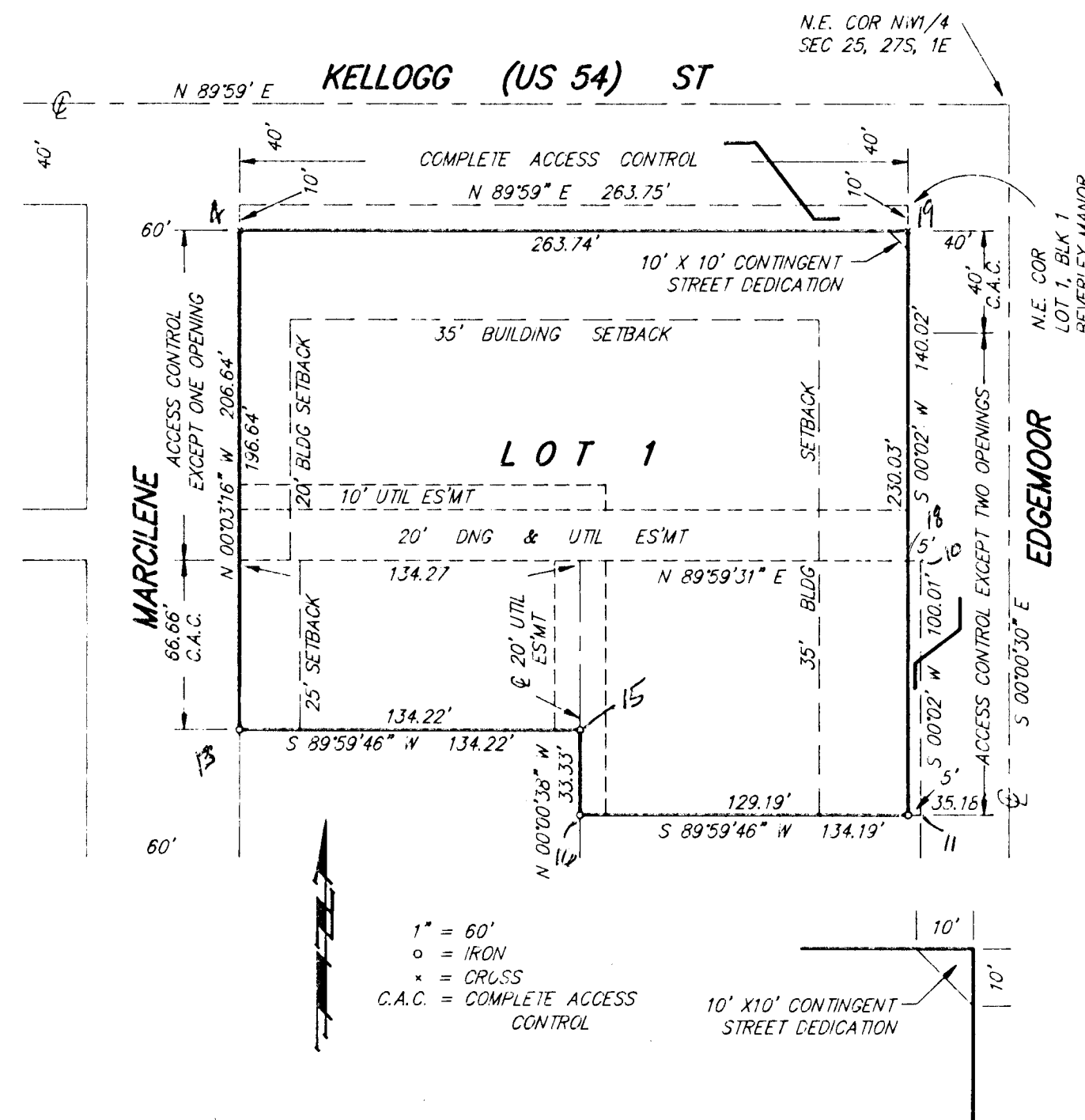
*T. G. Davis Jr.* T. G. Davis Jr.  
*Norma J. Davis* Norma J. Davis  
D. & M. Investments, a Kansas Partnership

State of Kansas) SS The foregoing instrument acknowledged be-  
fore me, this \_\_\_\_\_ day of \_\_\_\_\_ 1991, by T. G. Davis,  
Jr. and Norma J. Davis, husband and wife, and T. G. Davis, Jr.,  
D. & M. Investments, a Kansas Partnership

My App't. Exp. \_\_\_\_\_  
*Lois M. Smith* Notary Public  
Lois M. Smith

State of Kansas) SS This is to certify that this plat has been  
Sedgwick County) filed for record in the office of the Register of Deeds, this \_\_\_\_\_ day  
of \_\_\_\_\_ 1991, at \_\_\_\_\_ o'clock \_\_\_\_\_ M.; and is duly record-  
ed.

\_\_\_\_\_ Register of Deeds  
*Pat Kettler*  
\_\_\_\_\_ Deputy  
*Ed Resa*



This plat of "DAVIS-MOORE 8TH ADDITION",  
Wichita, Sedgwick County, Kansas, has been submitted to and approv-  
ed by the Wichita-Sedgwick County Metropolitan Area Planning Com-  
mission, Wichita, Kansas.  
Dated this \_\_\_\_\_ day of \_\_\_\_\_ 1991.  
Wichita-Sedgwick County Metropolitan Area Planning Commission.

\_\_\_\_\_ Chairman  
*George D. Sherman*  
\_\_\_\_\_ Secretary  
*Marvin S. Krout*

This plat approved and all dedications  
shown hereon accepted by the City Council of the City of Wichita,  
Kansas, this \_\_\_\_\_ day of \_\_\_\_\_ 1991.

\_\_\_\_\_ Mayor  
*Bob Knight*  
\_\_\_\_\_ Deputy City Clerk  
*Pat Burnett*

Entered on transfer record this \_\_\_\_\_ day  
of \_\_\_\_\_ 1991.  
\_\_\_\_\_ County Clerk  
*Don Wright*