

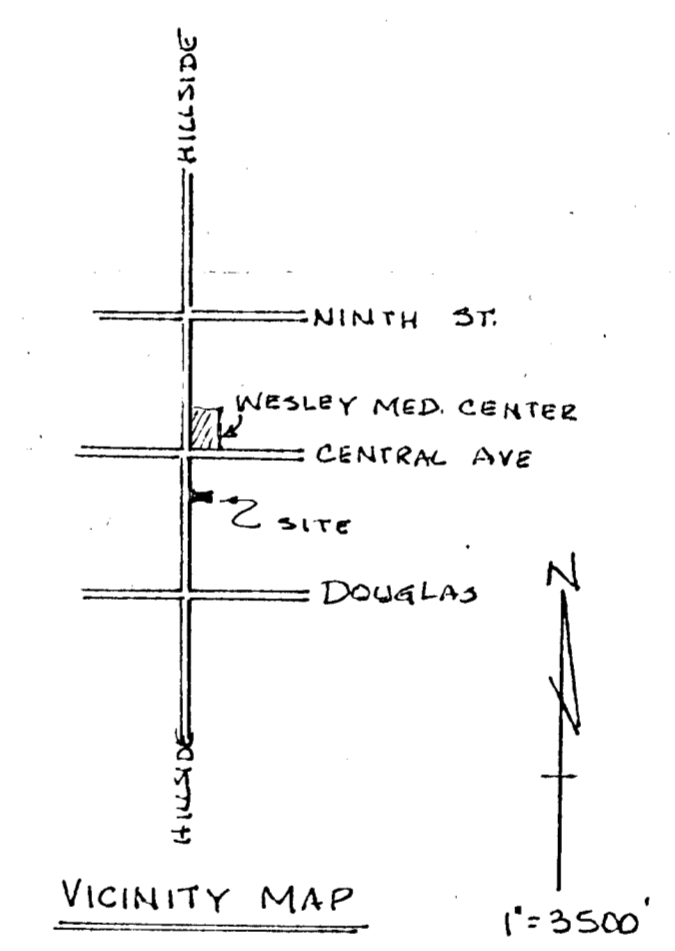
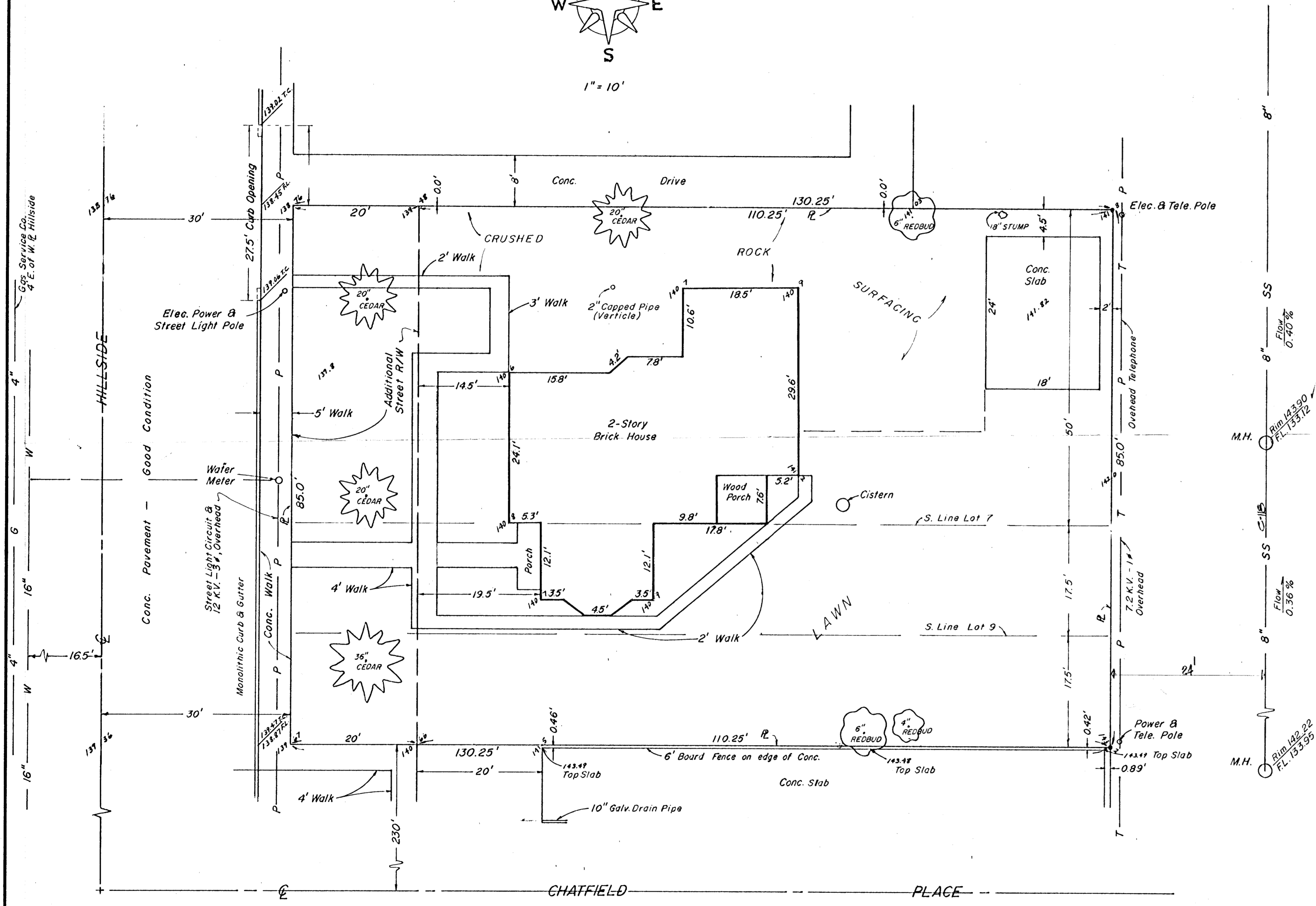
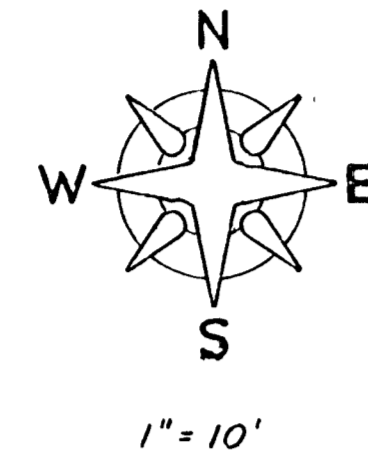
PRELIMINARY PLAT

OF

ORTHOPEDIC SPECIALTIES SECOND ADD.

LEGAL DESCRIPTION —

*Lots 7, 9, and 11, Hillside Avenue
FLORAL ADDITION to the City of Wichita,
Sedgwick County, Kansas*



BENCH MARK
Top of curb @ N. end
return N.E. cor. Hillside &
Chaffield, Elev. 137.95



MOEHRING & ASSOCIATES
CONSULTING ENGINEERS
WICHITA
FILE NO. 80-042-SD 4-23-80