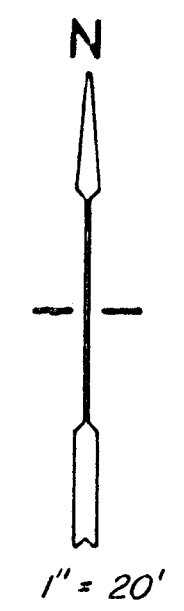
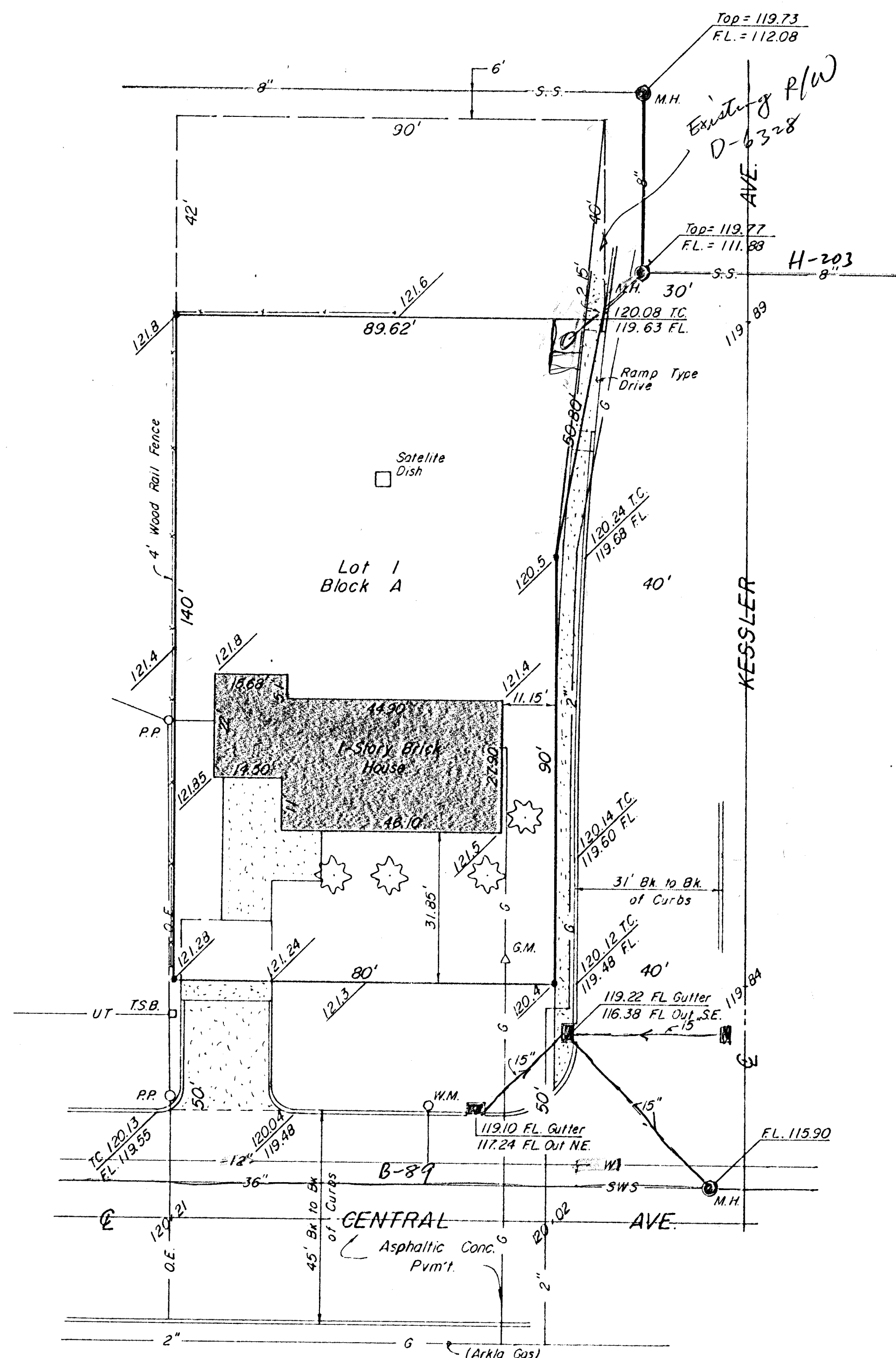


PRELIMINARY PLAT
of
OMO SECOND ADDITION
To Wichita, Sedgwick Co., Ks.

LEGAL DESCRIPTION

THE SOUTH 140.0' OF LOT 6, WALLS ADDITION TO WICHITA, SEDGWICK COUNTY, KANSAS.

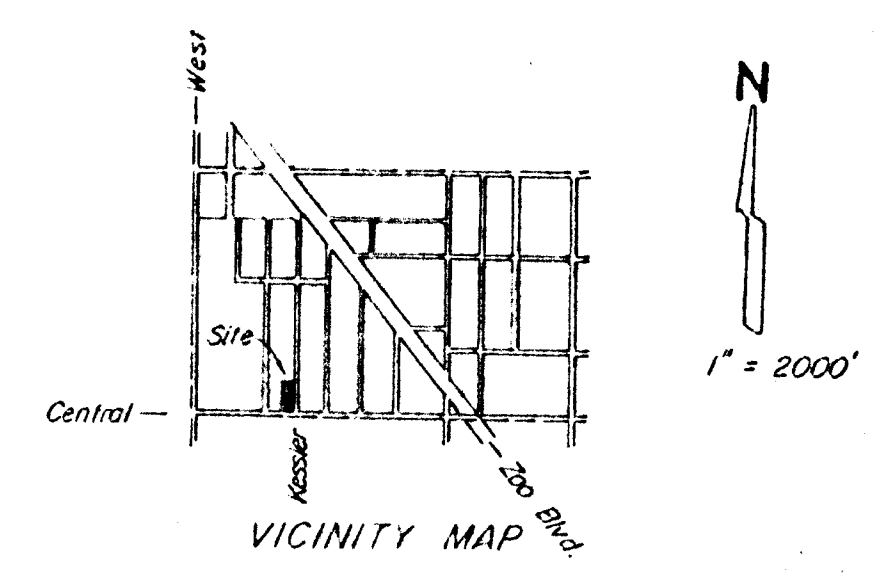


LEDGEND -

- W = Water Main
- WM = Water Meter
- G = Gas Main
- GM = Gas Meter
- OE = Overhead Electric
- UT = Underground Telephone
- T.S.B. = Telephone Splice Box
- P.P. = Power Pole
- T.C. = Top of Curb
- FL. = Flow Line
- S.S. = Sanitary Sewer
- SWS = Storm Water Sewer
- 121.8 = Spot Elevation

BENCHMARK -

"□" on top of W. curb Kessler Ave.,
opposite S.E. Prop. Cor.
Elev. 120.12 City Datum



MOEHRING & ASSOCIATES
CONSULTING ENGINEERS
WICHITA

