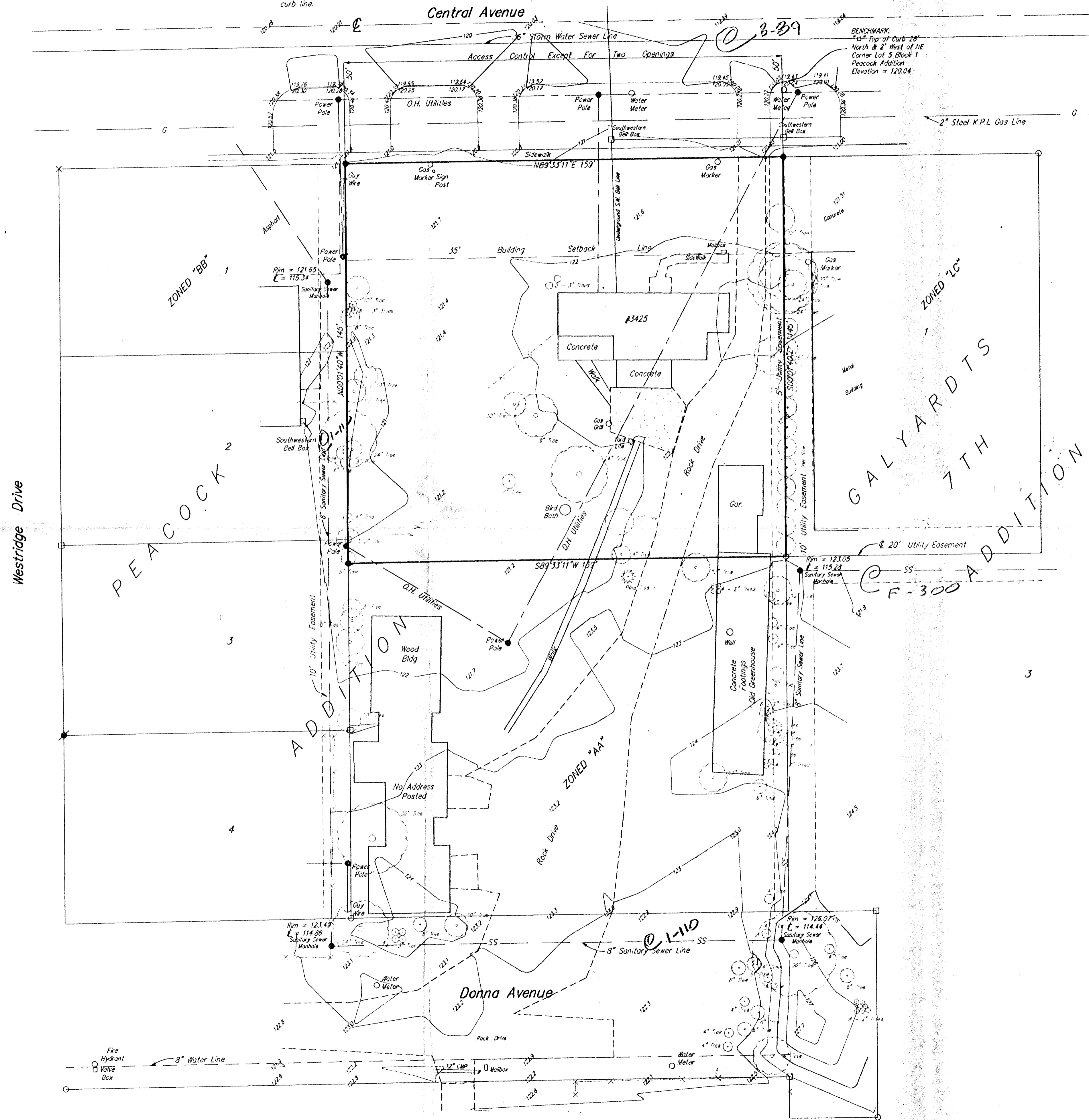


SKETCH PLAT

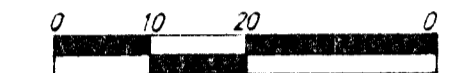
DANVILLE ADDITION

WICHITA, SEDGWICK COUNTY, KANSAS

NOTE: 12" Water Line
4.5' south of the north
curb line.



Scale



- x = Magic Marker Cross Set
- o = 3/4" Iron Found
- = 1/2" Iron Found
- = #4 Rebar Found
- = #4 Baughman Rebar Set

Legal

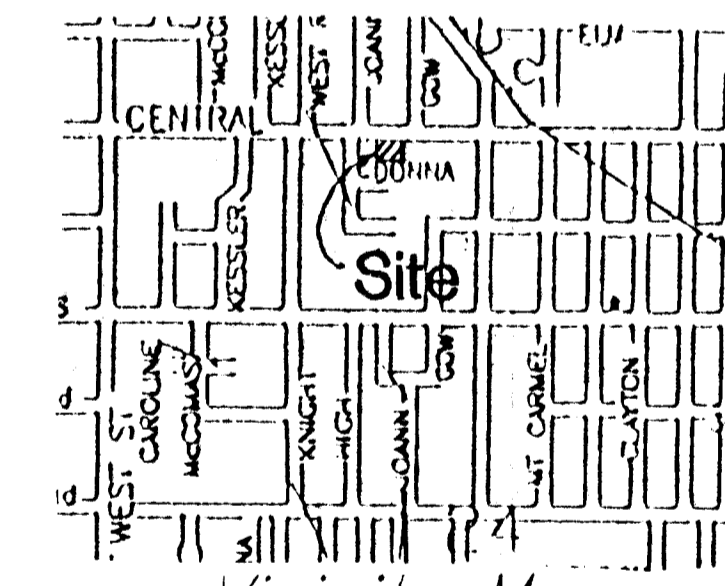
A Replat of the North 145 feet of Lot 5, Block 1,
Peacock Addition to Wichita, Kansas.

Benchmark

City of Wichita Bench Mark 30' south
and 42' east of center line of both.
Elevation = 121.66 (City Datum)

Owner

Danville Investment, Inc.
Box 965, Wichita, Kansas, 67201
(316)262-2605



Vicinity Map

STORM SEWER BB-89
SANITARY SEWER I-110, F-300

DATE: April 3, 1985