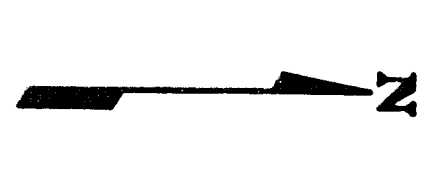
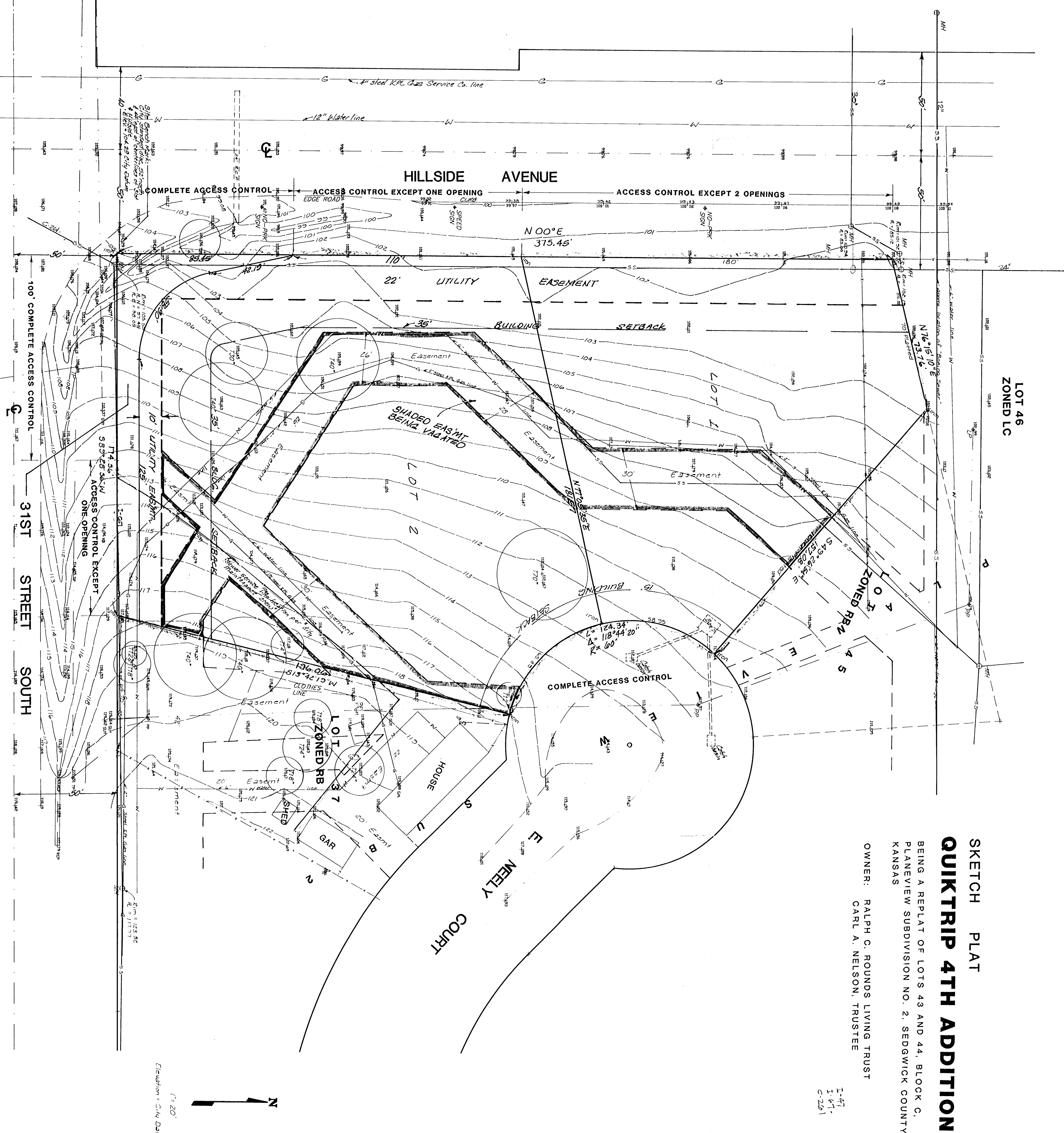


SKETCH PLAT
QUIKTRIP 4TH ADDITION
 BEING A REPLAT OF LOTS 43 AND 44, BLOCK C,
 PLANEVIEW SUBDIVISION NO. 2, SEDGWICK COUNTY,
 KANSAS
 OWNER: RALPH C. ROUNDS LIVING TRUST
 CARL A. NELSON, TRUSTEE
 T-47
 I-47-
 C-261



1" = 20'
 Elevation - City Datum