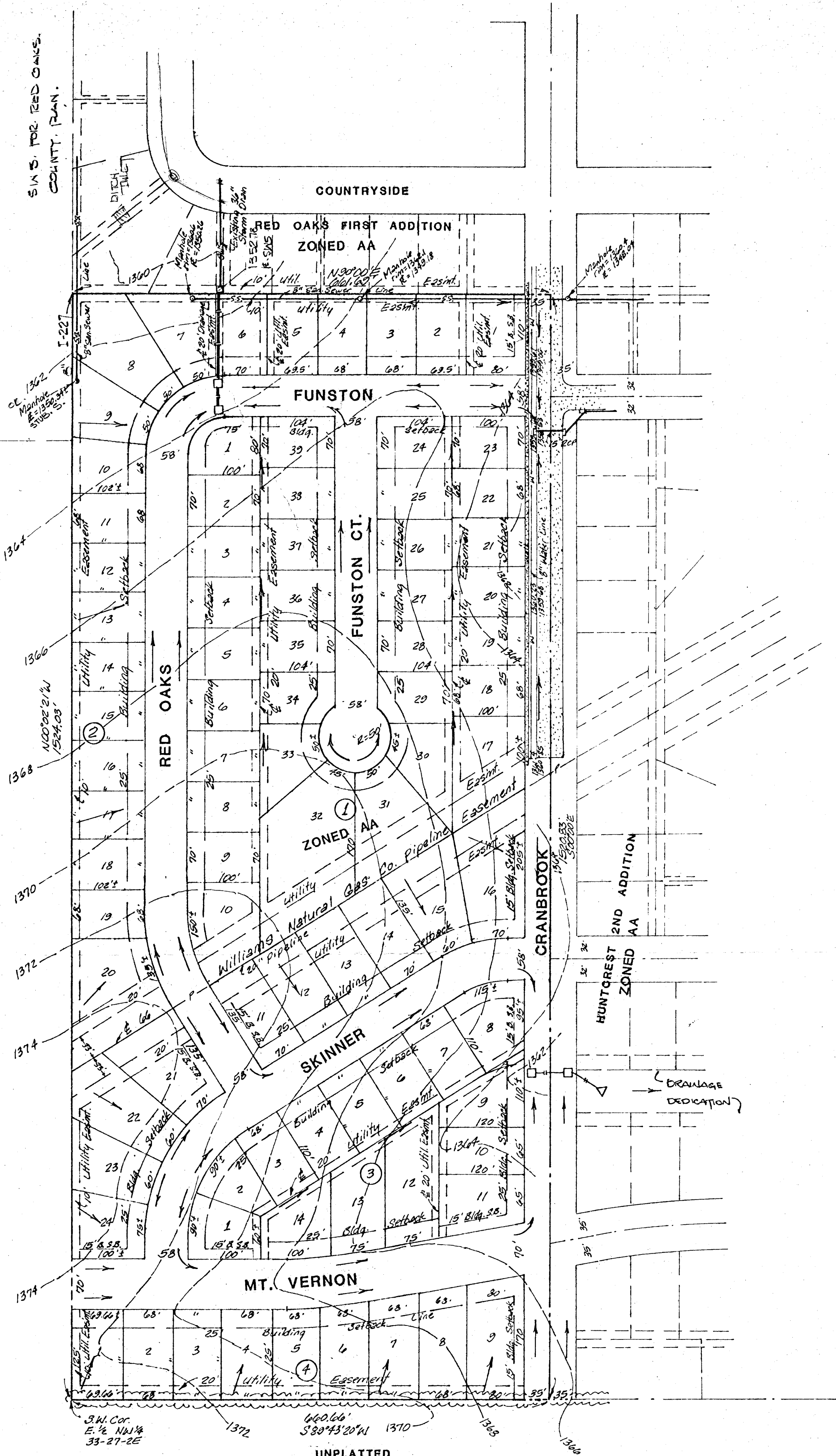
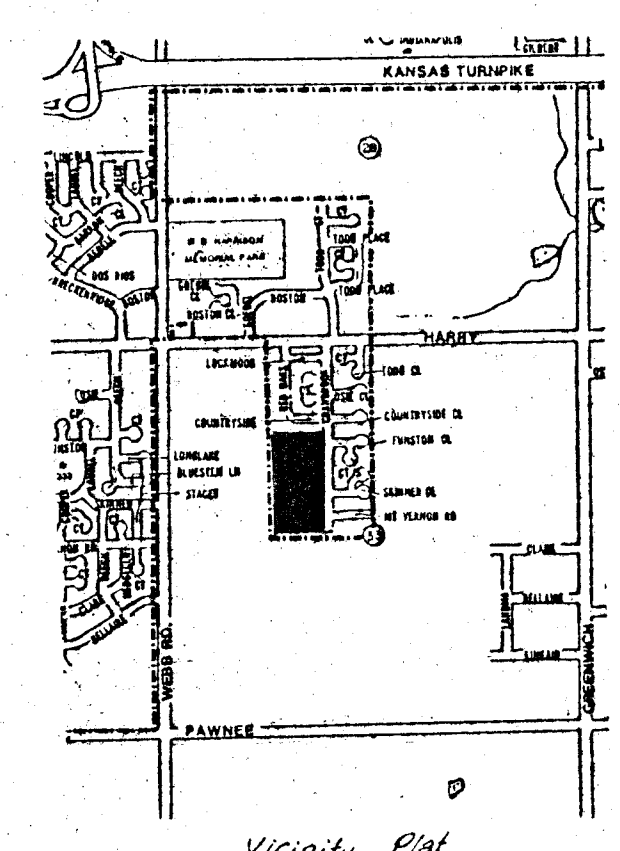


ZONED R1  
UNPLATTED  
COLONIAL HGTS. BAPTIST CHURCH

ZONED R1  
UNPLATTED  
VIRGINIA BLAKE BECKER  
FLOYD BECKER



1"=100'  
All contours at 2 foot intervals  
Date of 1000-1975  
Benchmark:  
R.R. spike in cover-pole  
60' S of NE. Cor. NW 1/4  
Elev. = 1343.49 MSL



UNPLATTED  
CHERRY CREEK DEVELOP., INC.  
ZONED R1

PRELIMINARY PLAT  
**CRANBROOK ADDITION**

A TRACT IN THE E1/2 OF THE  
NW1/4 OF SEC. 33 27-2E

OWNERS: JIM COHLMIA  
SAMMY KHOURI  
HARRY KHOURI JR.

**DRAINAGE CONCEPT**

**BAUGHMAN COMPANY, P.A.**  
SURVEYING & ENGINEERING  
316-262-7271 • 315 ELLIS • WICHITA, KANSAS 67211

MAR. 23, 1990