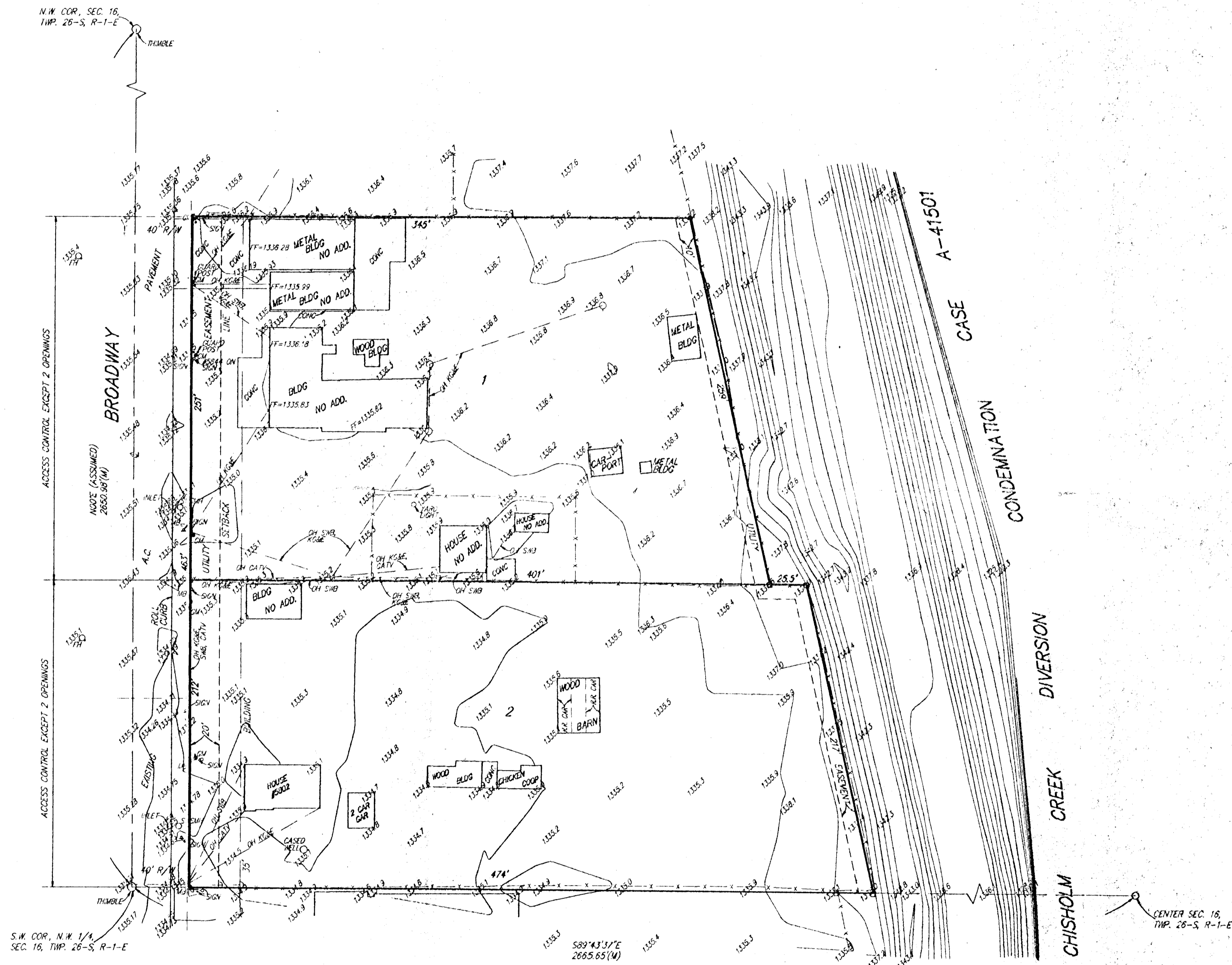


# PRELIMINARY PLAT CREASON ADDITION

SEDGWICK COUNTY, KANSAS



- 1" = 50'
- = 1/2" REBAR w/ BAUGHMAN CAP (SET)
  - = CONCRETE MONUMENT (FOUND)
  - = 3/4" IRON (FOUND)
  - BEARING BASE = ASSUMED
  - = LIGHT POLE
  - = POWER POLE

OWNER: CREASON CORRUGATING & MACHINERY CO., INC.  
5844 N. BROADWAY  
MICHITA, KS 67219  
PH: 316-744-0061

DESCRIPTION: A TRACT IN THE S.W. 1/4 OF THE N.W. 1/4  
OF SEC. 16, TWP. 26-S, R-1-E

BENCH MARK: "L" CUT ON NORTH END OF R.C.B.C. HUBGUARD,  
160' W. & 45' N. OF BROADWAY & 61ST ST. NO. & BOTH.