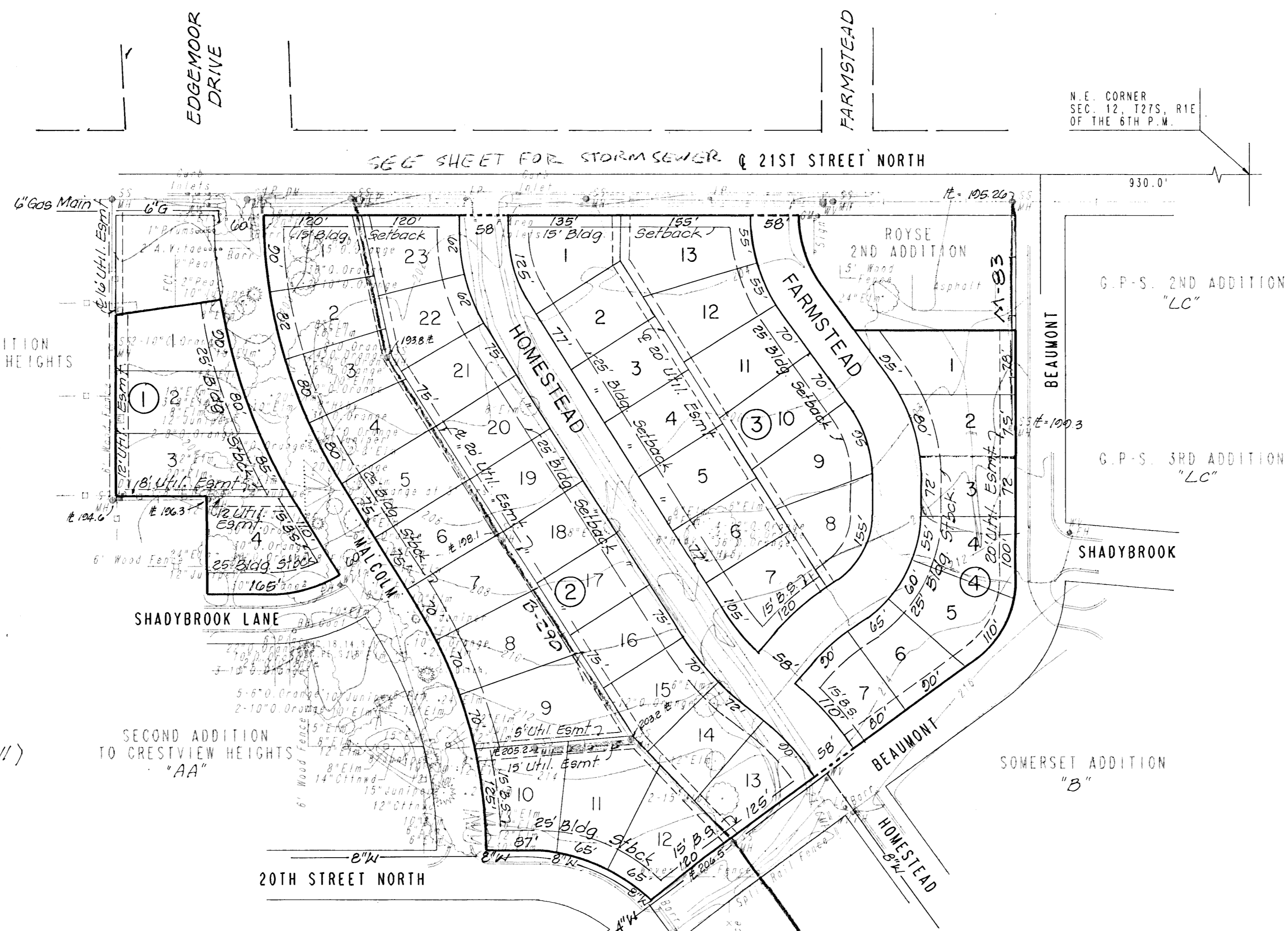


PRELIMINARY PLAT
FOURTH ADDITION TO CRESTVIEW HEIGHTS

OWNER : SOCORA VILLAGE COMPANY
 % LARRY A. CHAMBERS, PRESIDENT
 104 S. BROADWAY, SUITE 200
 WICHITA, KANSAS 67202-4165

ENGINEER: PROFESSIONAL ENGINEERING CONSULTANTS, P.A.
 303 S. TOPEKA
 WICHITA, KANSAS 67202

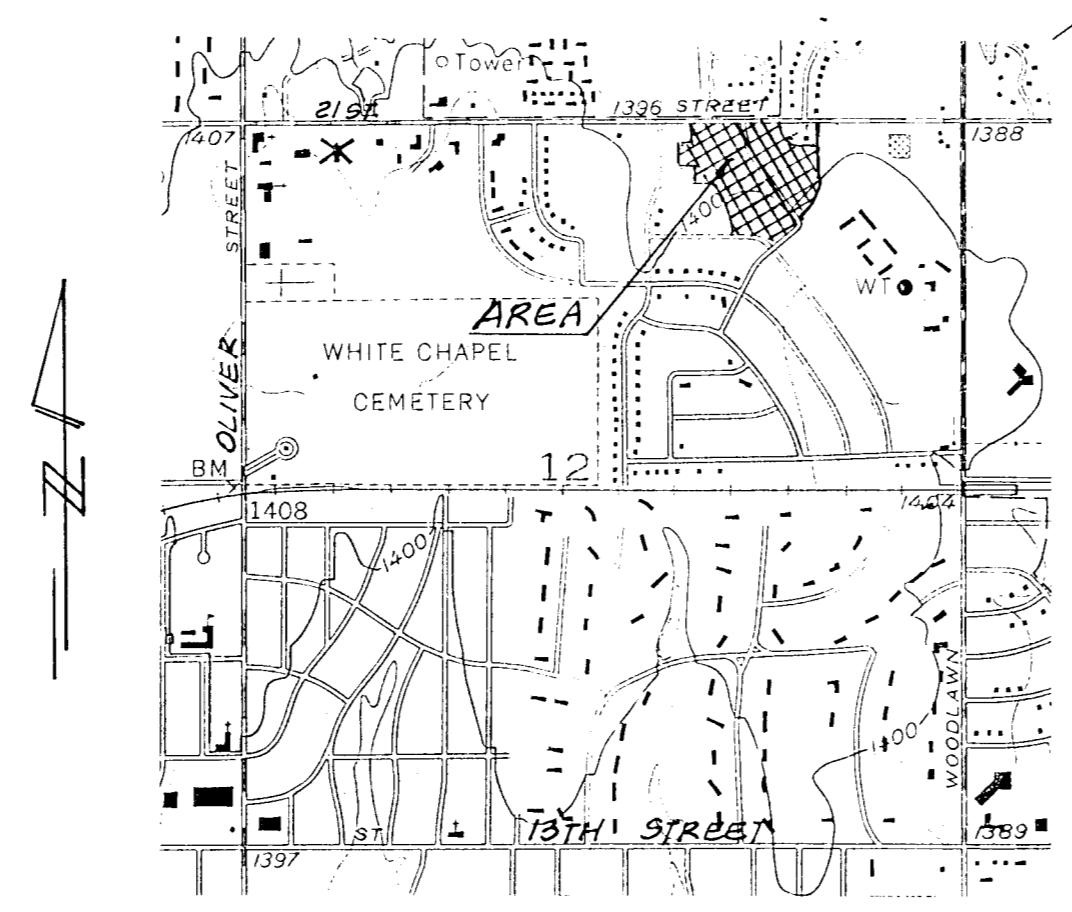


SCALE: 1"=100'
 Feb. 1993

B.M. - R.R. SPIKE IN S.W. FACE POWER POLE
 AT S.W. CORNER 21ST AND FARMSTEAD,
 APPROX. 190' WEST OF BEAUMONT,
 ELEV. = 204.64 CITY DATUM
 Topo: Feb. 1993

Notes:

- 1.- 12KV 3φ, 4wire aerial Power Line East-West on South side 21st Street (K.G.&E)
- 2.- Underground East-West Telephone Line on South side 21st Street. (S. Western Bell)
- 3.- 12" H.P. Gas Main East-West on South side 21st St. (Gas Service.)



AREA MAP