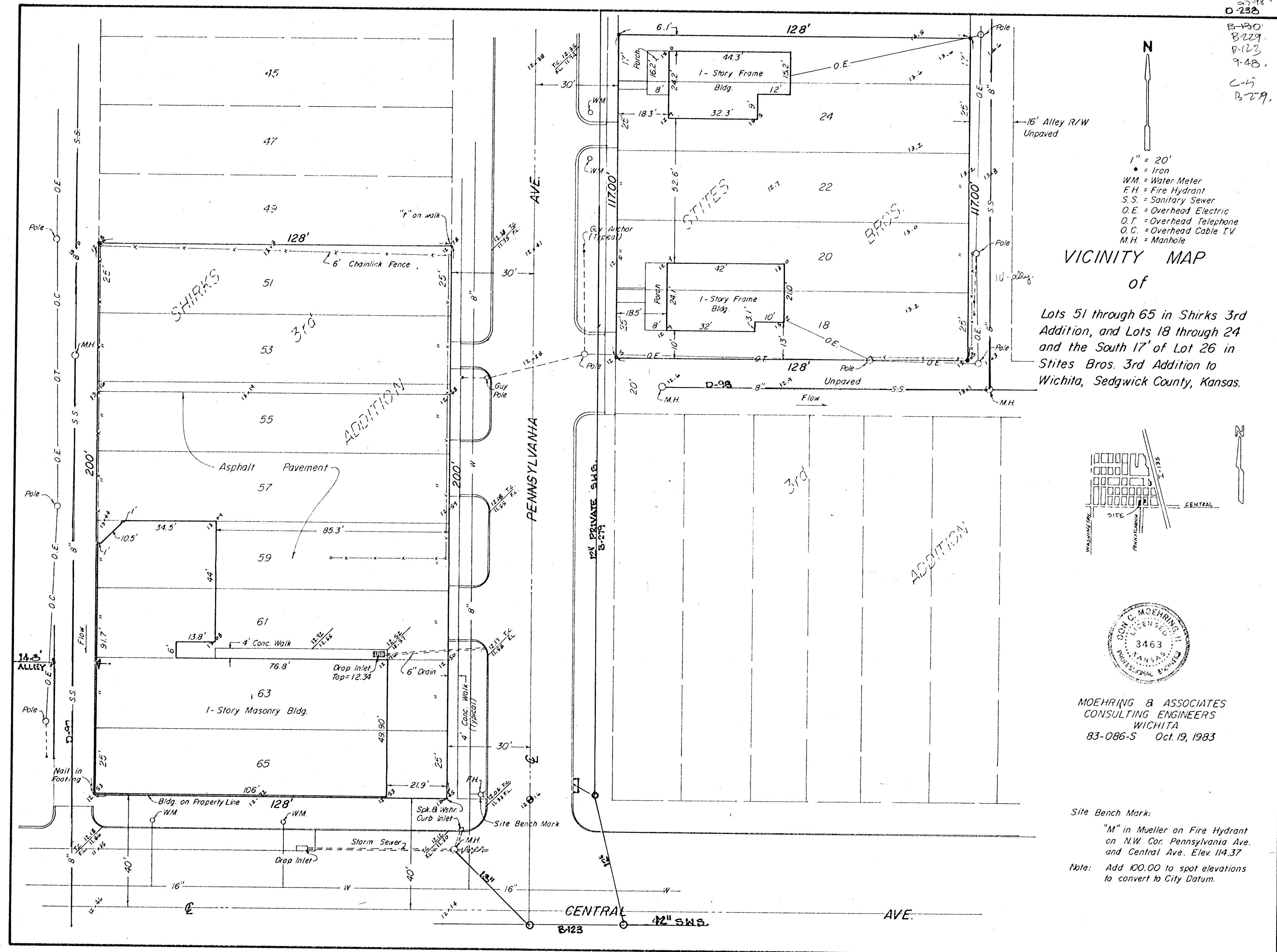
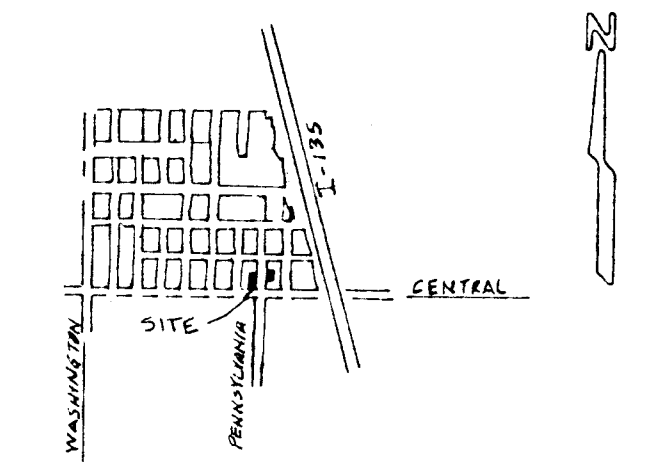


97-98
 D-233
 B-130
 B-229
 B-123
 7-48
 C-15
 B-279



- 1" = 20'
- = Iron
- WM = Water Meter
- F.H. = Fire Hydrant
- S.S. = Sanitary Sewer
- O.E. = Overhead Electric
- O.T. = Overhead Telephone
- O.C. = Overhead Cable T.V.
- M.H. = Manhole

VICINITY MAP
 of
 Lots 51 through 65 in Shirks 3rd
 Addition, and Lots 18 through 24
 and the South 17' of Lot 26 in
 Stites Bros. 3rd Addition to
 Wichita, Sedgwick County, Kansas.



MOEHRING & ASSOCIATES
 CONSULTING ENGINEERS
 WICHITA
 83-086-S Oct. 19, 1983

Site Bench Mark:
 "M" in Mueller on Fire Hydrant
 on N.W. Cor. Pennsylvania Ave.
 and Central Ave. Elev. 114.37
 Note: Add 100.00 to spot elevations
 to convert to City Datum.