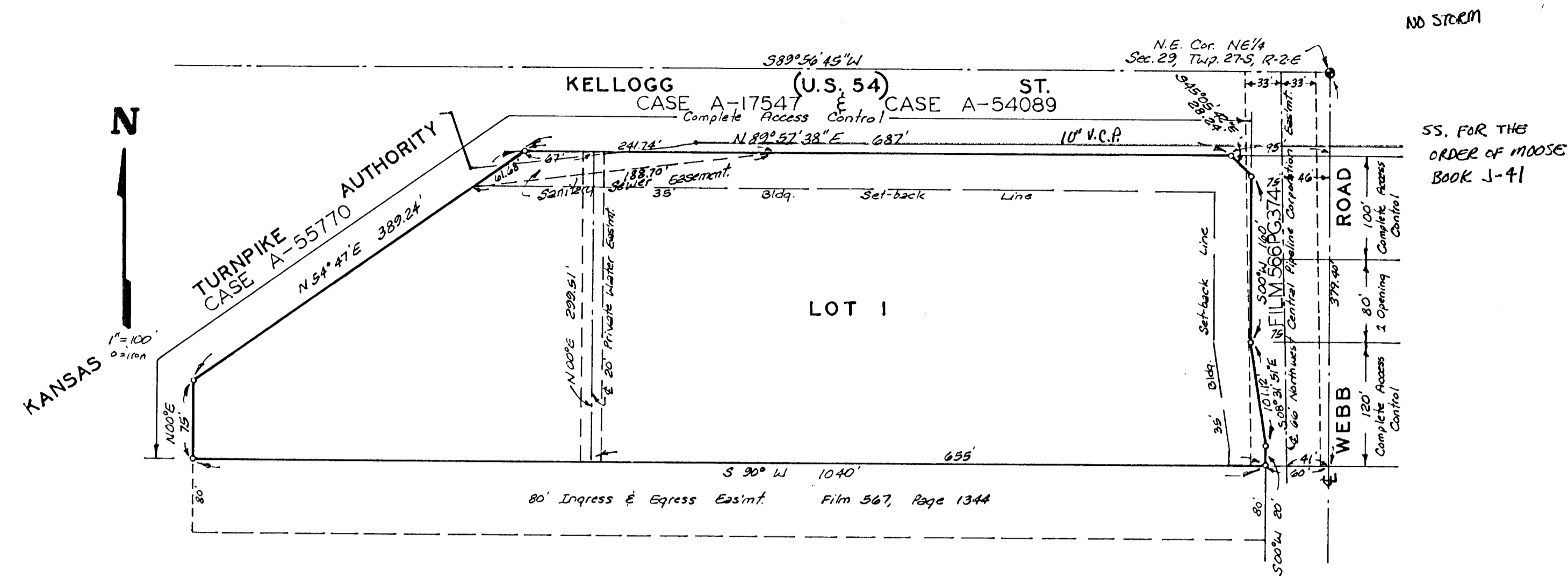


DAVIS-MOORE ADDITION

WICHITA, KANSAS.



State of Kansas? S.S. Sedwick County S.S. We, Baughman Company, P.A., Surveyors in aforesaid county and state do hereby certify that we have surveyed and platted "DAVIS-MOORE ADDITION, Wichita, Kansas, and that the accompanying plat is a true and correct exhibit of the property surveyed described as beginning at a point on the east section line of Sec. 29, Twp. 27-S, R-2-E of the 6th P.M., Sedwick County, Kansas, 109.4 feet south of the N.E. Corner of Sec. 29, Twp. 27-S, R-2-E; thence southerly along the said east section line a distance of 270.0 feet; thence westerly and at a right angle to said east section line a distance of 110.0 feet; thence northerly and at a deflection angle of 90°20' right a distance of 125.0 feet; thence northeasterly at a deflection angle of 54°47' right a distance 383.24 feet to the south Right-of-way of U.S. Highway 54; thence easterly along the south Right-of-way of U.S. Highway 54 a distance of 100.0 feet, more or less to a point 79.4 feet south and 79.8 feet west of the N.E. Corner of Sec. 29, Twp. 27-S, R-2-E; thence southeasterly 18.4 feet to a point 109.4 feet south and 4.8 feet west of the N.E. Corner of Sec. 29, Twp. 27-S, R-2-E; thence easterly 4.8 feet to the point of beginning, except the east 30 feet of road and except that part dedicated for road in dedication filed on Film 556, Page 134.

Baughman Company, P.A.
 Date _____ Surveyor
 William L. Karber

Know all men by these presents that we, the undersigned, have caused the land in the surveyors certificate to be platted into a lot to be known as "DAVIS-MOORE ADDITION", Wichita, Kansas. The utility easements are hereby granted as indicated for the construction and maintenance of public utilities. All abutters rights of access to or from the Kansas Turnpike Authority over and across the west and northwesterly lines of said Lot 1, and to or from U.S. Highway 54 over and across the north line of said Lot 1 and to or from Webb Road over and across the east line of said Lot 1 are hereby granted to the appropriate governing bodies provided however that Lot 1 shall have access to Webb Road at 1 point over and across the north 80 feet of the south 200 feet of the east line of said Lot 1 as shall be determined by the City engineer of the City of Wichita, Kansas.

D. and M. Investment, a partnership
 T.G. Davis, Jr. Partner
 Robert Moore Partner

State of Kansas? S.S. Sedwick County S.S. The foregoing instrument was acknowledged before me, this _____ day of _____, 1983, by T.G. Davis, Jr., partner and Robert Moore, partner of D and M Investments, a partnership.

My Appt. Exp. _____ Notary Public

State of Kansas? S.S. Sedwick County S.S. The foregoing instrument was acknowledged before me, this _____ day of _____, 1983, by _____ of Union National Bank of Wichita.

My Appt. Exp. _____ Notary Public

This plat of "DAVIS-MOORE ADDITION", Wichita, Kansas, has been submitted to and approved by the Wichita-Sedwick County Metropolitan Area Planning Commission, Wichita, Kansas.
 Dated this _____ day of _____, 1983.

Wichita-Sedwick County Metropolitan Area Planning Commission
 David Baughman Chairman
 Robert A. Lakin Secretary

This plat approved and all dedications shown hereon accepted by the Board of Commissioners of the City of Wichita, Kansas, this _____ day of _____, 1983.

Margalee Wright Mayor
 Donald C. Anisiek City Clerk

This plat approved and all dedications shown hereon accepted by the Board of Commissioners, Sedwick County, Kansas, this _____ day of _____, 1983.

Jack Spratt Chairman
 Tom Scott Commissioner
 Donald E. Oragg Commissioner
 Dorothy K. White County Clerk

Entered on transfer record, this _____ day of _____, 1983.
 Dorothy K. White County Clerk

State of Kansas? S.S. Sedwick County S.S. This is to certify that this plat has been filed for record in the office of the Register of Deeds, this _____ day of _____, 1983 at _____ o'clock _____ M; and is duly recorded.

Bette F. McEart Register of Deeds
 Pat Keller Deputy

We, the undersigned, holders of a mortgage on the above described property, do hereby consent to this plat of "DAVIS-MOORE ADDITION", Wichita, Kansas.
 Union National Bank of Wichita