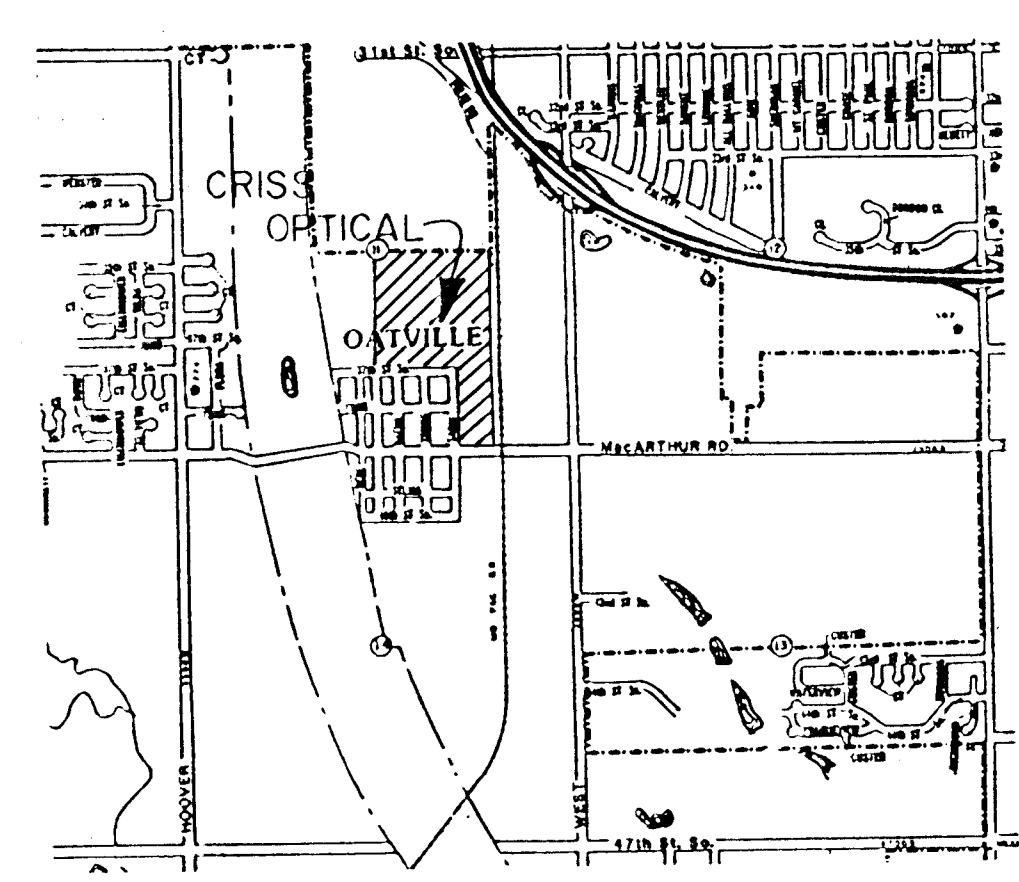
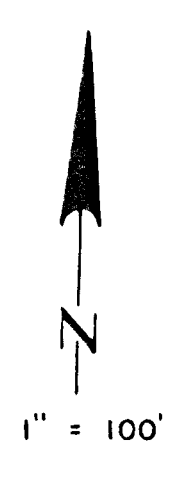


BIG LAKE ADDITION
ZONING: G MOBILE HOME

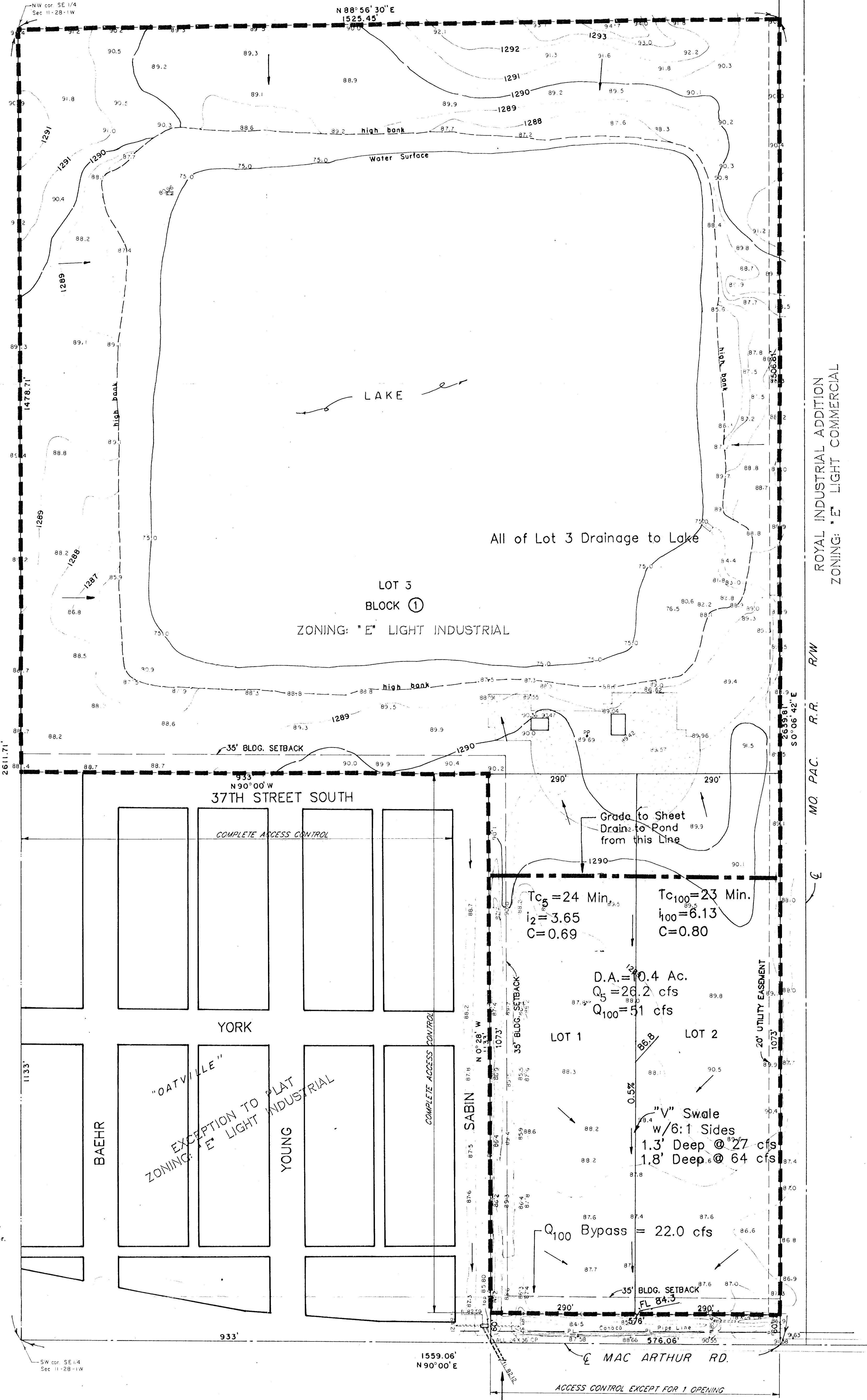
UNPLATTED
ZONING: *E' LIGHT COMMERCIAL

ROYAL INDUSTRIAL ADDITION
ZONING: *E' LIGHT COMMERCIAL



VICINITY MAP
NO SCALE

B.M. = ELEV. 1289.15 - 60d in H.L.P. 90' West
& 40' South of SW cor.
SE 1/4, Sec. 11-28-1W



DRAINAGE PLAN &
PRELIMINARY PLAT

CRISS OPTICAL ADDITION

TO SEDGWICK COUNTY, KANSAS
DATE: MAY 1, 1992

OWNER: CRISS OPTICAL MFG. CO., INC.

ENGINEER: POE & ASSOCIATES OF KANSAS