

CURVE DATA	
Curve #7	Curve #8
R = 230.02'	R = 230.02'
T = 25.30'	T = 25.30'
Δ = 12°33'16"	Δ = 12°33'16"
L = 50.40'	L = 50.40'
MO = 1.38'	MO = 1.38'

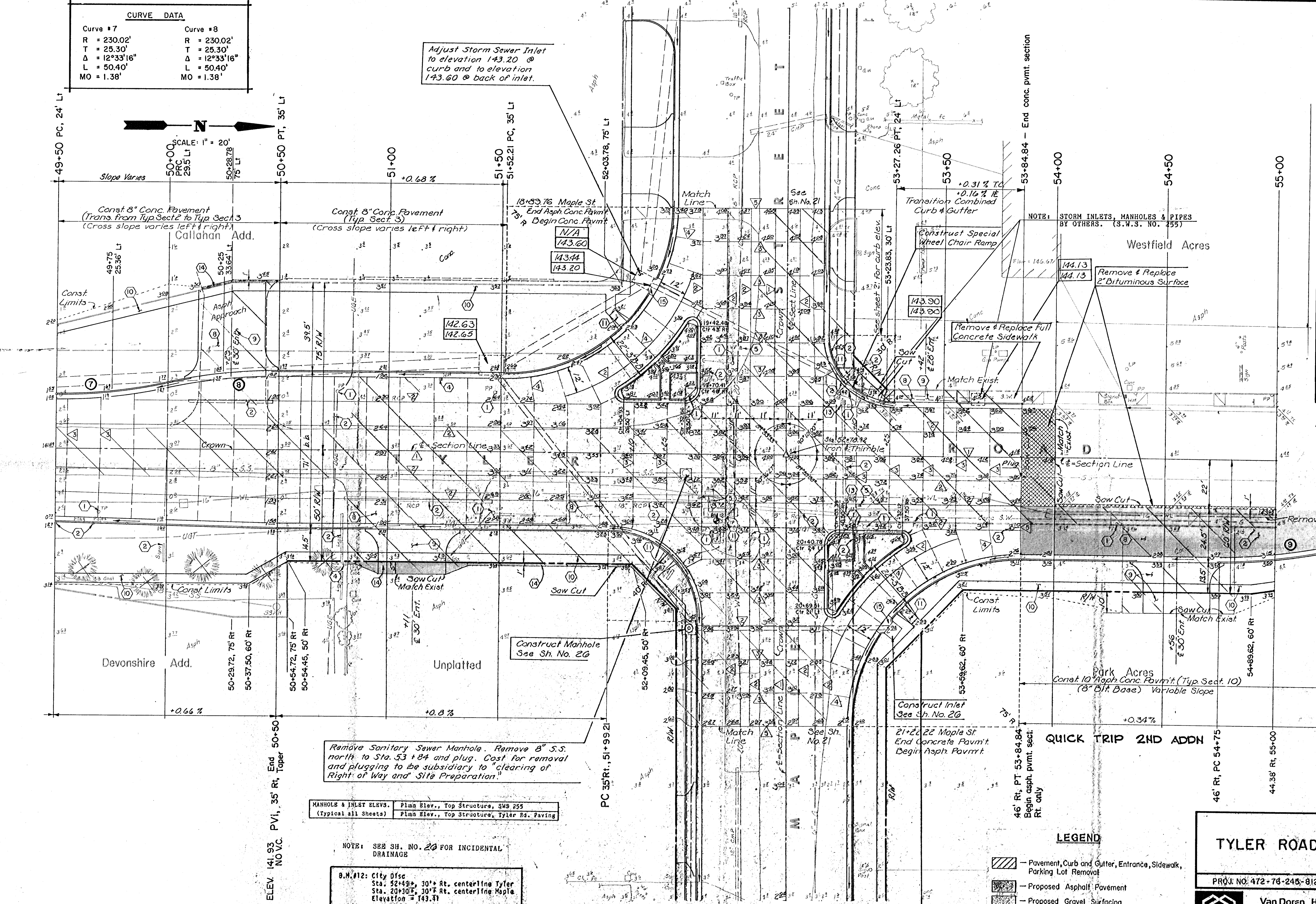
**NOTES**

- 1 Relocate (by others)
- 2 Remove (by contractor)
- 3 Remove and replace
- 4 Protect, adjust or relocate (by others)
- 5 Adjust or relocate (by contractor)
- 6 Leave in place, Do Not Disturb
- 7 Remove mat or pavement as required and replace with temporary asphalt
- 8 Remove entrance
- 9 Construct concrete entrance
- 10 Construct 4'x 4' concrete sidewalk
- 11 Construct wheelchair ramp
- 12 Remove MH and plug storm pipes
- 13 Remove drop inlets
- 14 Remove and replace asphalt pavement as required

- See Sh. No. 29 for Joint Details
- ▲ Keyed Longitudinal Construction Joint
  - ▲ Sawn Longitudinal Joint
  - ▲ Sawn Transverse Joint at 15 foot centers
  - ▲ Sawn Transverse Joint at variable centers
  - ▲ Transverse Construction Joint
  - ▲ Transverse Joint at existing Pavement
- 15 Construct Inlet Hook-up

Note: See Sht. No. 28 for sidewalk details in N.W. quadrant.  
See Sht. No. 23 for island details.

CURVE DATA	
@ face	
CURVE #9	
R = 265'	
T = 27.70'	
Δ = 11°38'05"	
L = 55.20'	
MO = 1.44'	



Remove Sanitary Sewer Manhole. Remove 8" S.S. north to Sta. 53+84 and plug. Cost for removal and plugging to be subsidiary to "clearing of Right of Way and Site Preparation."

MANHOLE & INLET ELEV.	Plan Elev., Top Structure, SWS 255
(typical all sheets)	Plan Elev., Top Structure, Tyler Rd. Paving

NOTE: SEE SH. NO. 20 FOR INCIDENTAL DRAINAGE

B.N.#12: City Ofc  
Sta. 52+93, 30' Rt. centerline Tyler  
Sta. 20+30, 30' Rt. centerline Maple  
Elevation = 143.11

- LEGEND**
- Pavement, Curb and Gutter, Entrance, Sidewalk, Parking Lot Removal
  - Proposed Asphalt Pavement
  - Proposed Gravel Surfacing
  - Proposed Removal and Replacement of Existing Asphalt Surface

**TYLER ROAD PAVING**

Proj. No. 472-78-245-81258-000-000-001

Van Doren Hazard Stallings  
Architects - Engineers - Planners  
Topeka - Wichita - Minneapolis - Kansas City

Design by LCA
Checked by LCA
Date 3-86
Job No. 83-208-A0
Sheet 17
of 65