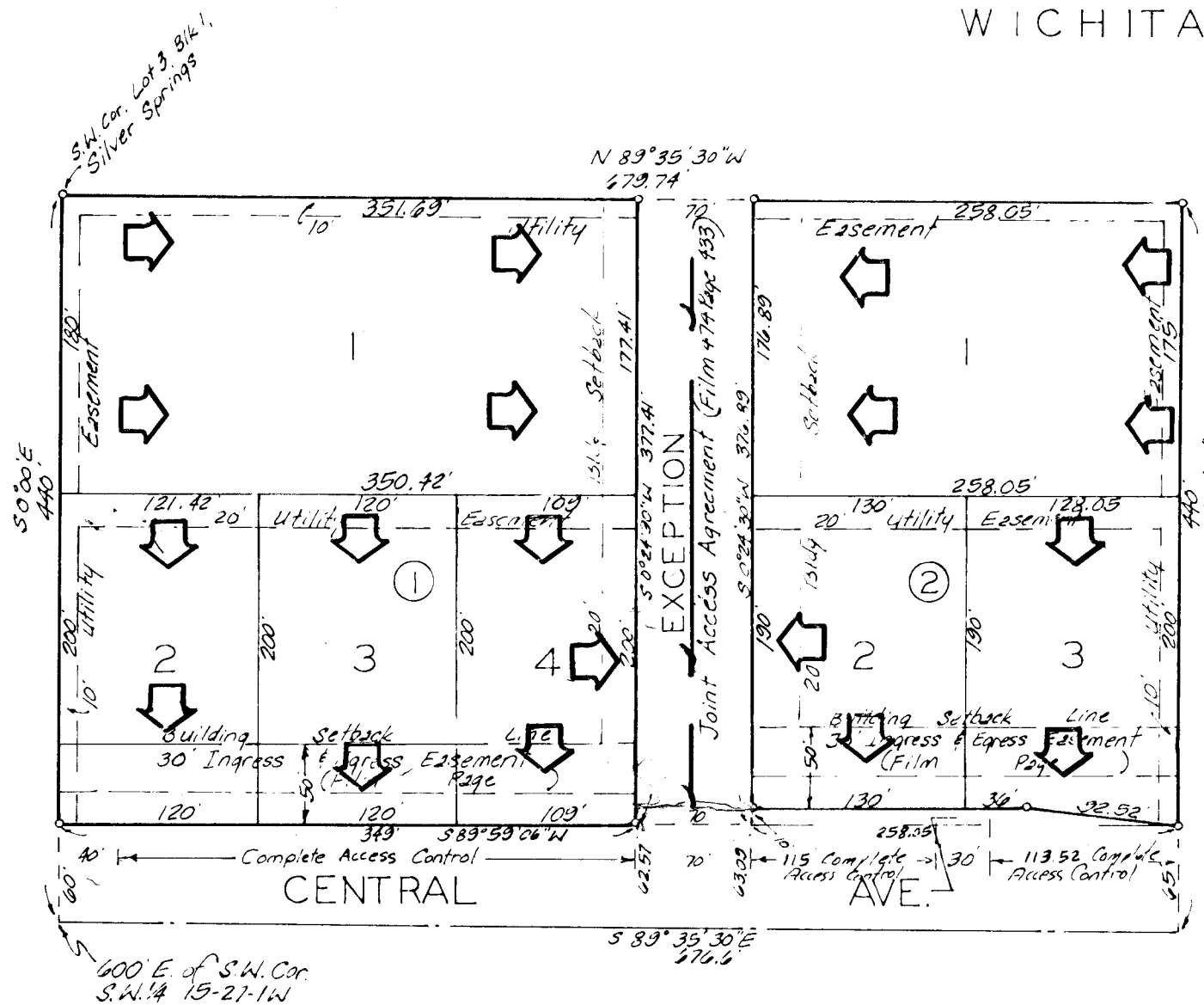


DRAINAGE PLAN

SECOND ADDITION TO QUEEN'S LAKE

WICHITA, KANSAS

LOTS IN BLK 1 & 2 TO
BE DRAINED TO THE
EXCEPTION OR CENTRAL
VIA DRIVES OR PLUMBS.



State of Kansas }
Sedgwick County } s.s. We, Baughman Company, P.T.
Surveyors in aforesaid county and state do hereby
certify that we have surveyed and platted "SECC
ADDITION TO QUEEN'S LAKE," Wichita, Kansas,
that the accompanying plat is a true and correct
exhibit of the property surveyed described as be-
ginning at a point 600 feet east of the S.W. corner of
the S.W. 1/4 of Sec. 15, Twp. 27-S, R-1-W of the 6th P.,
Sedgwick County, Kansas; thence east along the S.
line of said S.W. 1/4, 676.6 feet; thence north at right
angles to the south line of said S.W. 1/4, 440 feet; to
a point on the south line of Lot 4, Block 1, Silver
Springs, an Addition to the City of Wichita, Sedgwick
County, Kansas; thence west along the south line
said Lot 4 and extended west to the S.E. corner of
Lot 3, Block 1, in said addition; thence continuing
along the south line of said Lot 3, to the S.W. corner
of said Lot 3, said point being 600 feet east of the
west line of said S.W. 1/4; thence south 440 feet to
the place of beginning; except that portion thereof
platted in Silver Springs, an Addition to the City of
Wichita, Sedgwick County, Kansas, and subject to
Central Ave. right-of-way thereof on the south.

This plat of "SECOND ADDITION TO
QUEEN'S LAKE," Wichita, Kansas has been submitted
to and approved by the Wichita-Sedgwick County
Metropolitan Area Planning Commission, Wichita, Kansas.
Dated this _____ day of _____, 193__.

Wichita-Sedgwick County Metropolitan Area Planning
Commission

_____ Chairman
Alvin J. Hennessy, Jr.

_____ Secretary
Robert A. Lakin

This plat approved and all dedica-
tions shown hereon accepted by the Board of Commis-
sioners of the City of Wichita, Kansas, this _____ day
of _____, 193__.

_____ Baughman Company &
Date _____ Surve.

Know all men by these presen-
that we, the undersigned, have caused the land descri-
ed in the surveyors certificate to be platted into lots,
and a street to be known as "SECOND ADDITION TO Q
LAKE," Wichita, Kansas. The street is hereby dedicated
and for the use of the public. The easements are
hereby granted as indicated for the construction &
maintenance of all public utilities. All egress & ingress
of access to or from Central Ave. over and across the
south line of the east 20 feet of Lot 2, Block 1, and