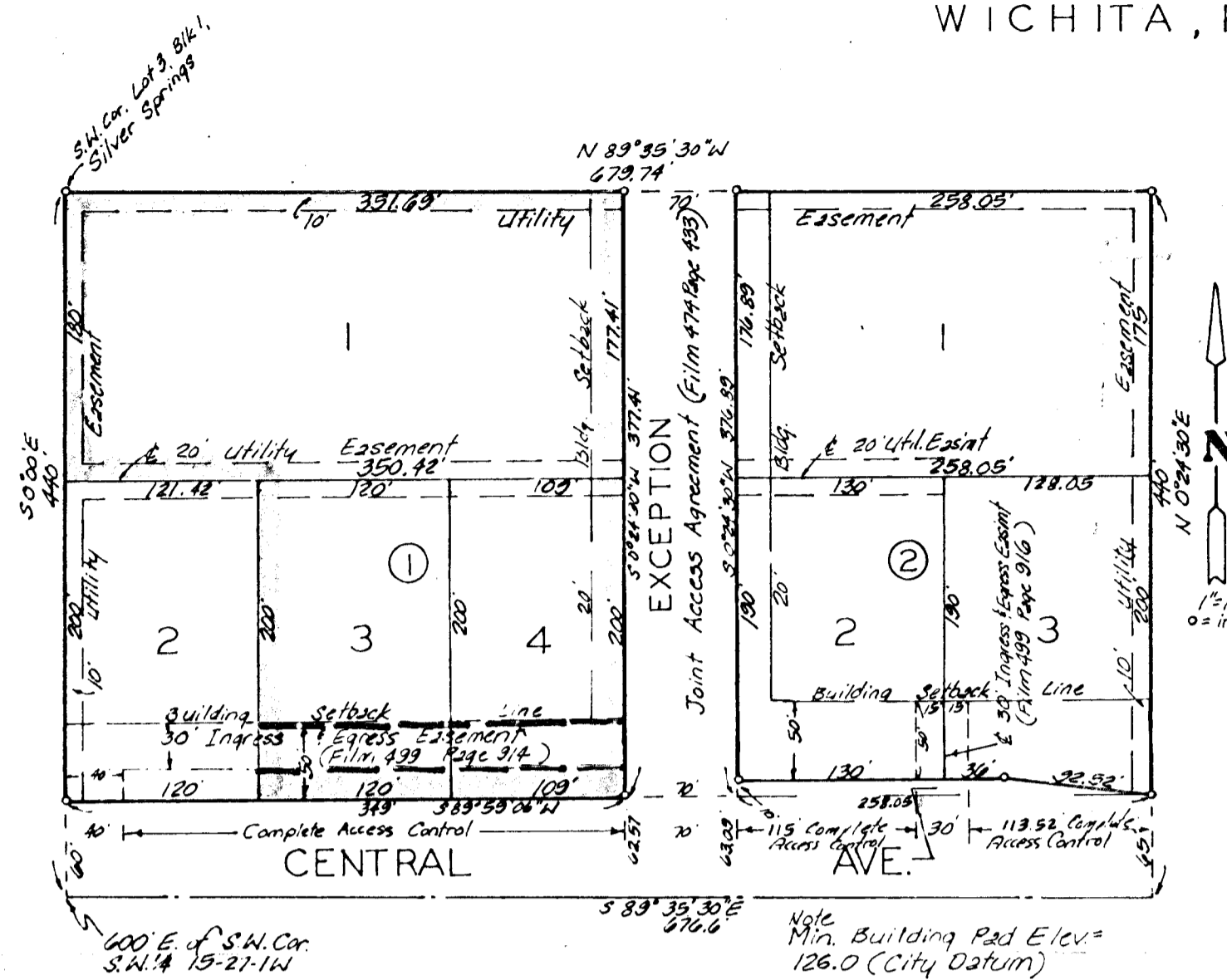


SECOND ADDITION TO QUEEN'S LAKE

WICHITA, KANSAS



State of Kansas } ss. We, Baughman Company, P.A.
 Sedgwick County } ss. Surveyors in aforesaid county and state do hereby
 certify that we have surveyed and platted "SECOND
 ADDITION TO QUEEN'S LAKE," Wichita, Kansas, and
 that the accompanying plat is a true and correct
 exhibit of the property surveyed described as be-
 ginning at a point 600 feet east of the S.W. corner of
 the S.W. 1/4 of Sec. 19, Twp. 27-S., R-1-W of the 6th P.M.,
 Sedgwick County, Kansas; thence east along the south
 line of said S.W. 1/4, 674.4 feet; thence north at right
 angles to the south line of said S.W. 1/4, 440 feet to
 a point on the south line of Lot 4, Block 1, Silver
 Springs, an Addition to the City of Wichita, Sedgwick
 County, Kansas; thence west along the south line of
 said Lot 4 and extended west to the S.E. corner of
 Lot 3, Block 1, in said addition; thence continuing
 along the south line of said Lot 3, to the S.W. corner
 of said Lot 3, said point being 600 feet east of the
 west line of said S.W. 1/4; thence south 440 feet to
 the place of beginning; except that portion thereof
 platted in Silver Springs, an Addition to the City of
 Wichita, Sedgwick County, Kansas, and subject to
 Central Ave. right-of-way thereof on the south.

This plat of "SECOND ADDITION TO
 QUEEN'S LAKE," Wichita, Kansas has been submitted to
 and approved by the Wichita-Sedgwick County
 Metropolitan Area Planning Commission, Wichita, Kansas,
 dated this 18th day of June, 1981.

Wichita-Sedgwick County Metropolitan Area Planning
 Commission

[Signature] Vice-Chairman
[Signature] Secretary
 Robert A. Lakin

This plat approved and all dedica-
 tions shown hereon accepted by the Board of Commis-
 sioners of the City of Wichita, Kansas, this 19th day
 of June, 1981.

[Signature] Mayor
[Signature] City Clerk
 Donald C. Strick

This plat approved and all dedica-
 tions shown hereon accepted by the Board of Commis-
 sioners of Sedgwick County, Kansas, this 5th day
 of June, 1981.

[Signature] Chairman
[Signature] Commissioner
[Signature] Commissioner
[Signature] County Clerk
 Dorothy J. White

Entered on transfer record this
 7th day of November, 1981.
[Signature] County Clerk
 Dorothy J. White
 #568667

State of Kansas } ss. This is to certify that this plat has
 Sedgwick County } ss. been filed for record in the office of the Register of
 Deeds this 3rd day of November, 1981, at 2:30
 o'clock P.M. and is duly recorded.

[Signature] Register of Deeds
[Signature] Deputy

8/12/81
 Date
 Baughman Company P.A.
[Signature] Surveyor
 WILLIAM L. KORTER

Know all men by these presents
 that we, the undersigned, have caused the land described
 in the surveyors certificate to be platted into lots, blocks,
 and a street to be known as "SECOND ADDITION TO QUEEN'S
 LAKE," Wichita, Kansas. The street is hereby dedicated to
 and for the use of the public. The easements are
 hereby granted as indicated for the construction and
 maintenance of all public utilities. All abutters rights
 of access to or from Central Ave. over and across the
 south line of the east 80 feet of Lot 2, Block 1, and
 across the south line of Lots 3 and 4, Block 1, and
 across the south line of the west 115.52 feet of Lot 2,
 Block 2, and across the south line of the east 113.52
 feet of Lot 3, Block 2, are hereby granted to the
 City of Wichita, Kansas. No building pad will be
 permitted below Elev. 126.0 (City Datum).

[Signature]
 Robert B. Boone Sherry D. Boone

State of Kansas } ss. The foregoing instrument was ac-
 Sedgwick County } ss. knowledged before me, this 12th day of August
 1981, by Robert B. Boone and Sherry D. Boone, his wife.

My Comm. Exp. 5/12/84
[Signature] Notary Public
 Mark A. Savary

We, the undersigned, holders of a
 mortgage on the above described property, do hereby
 consent to this plat of "SECOND ADDITION TO QUEEN'S
 LAKE," Wichita, Kansas.

Queen Lakes, Ltd.
 BY: John T. Arnold Associates, Inc., General Partner
 BY: *[Signature]* President
 John T. Arnold

State of Kansas } ss. The foregoing instrument was ac-
 Sedgwick County } ss. knowledged before me, this 12th day of August
 1981, by John T. Arnold, President of John T. Arnold
 Associates, Inc., General Partner of Queen Lakes, Ltd.,
 a Kansas limited partnership, on behalf of the
 partnership.

My Comm. Exp. 5/12/84
[Signature] Notary Public
 Mark A. Savary

82-1-15

S-1 1-28