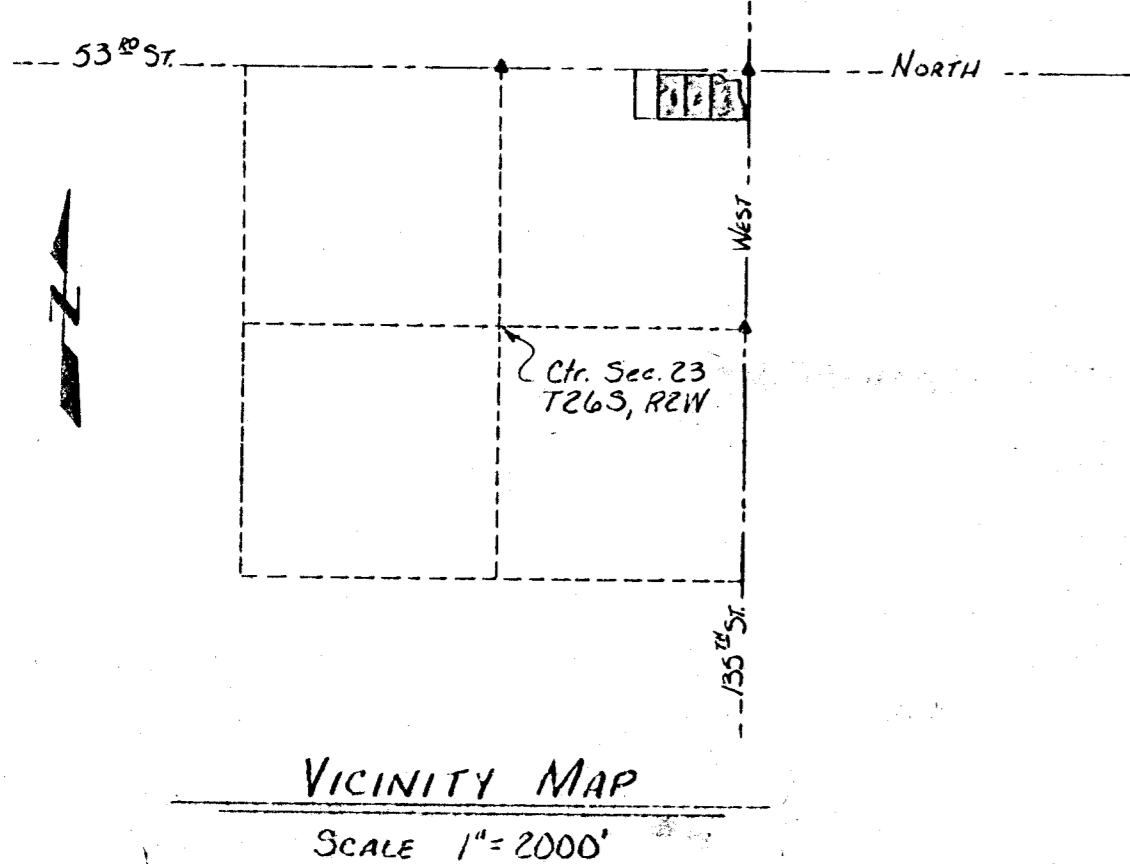
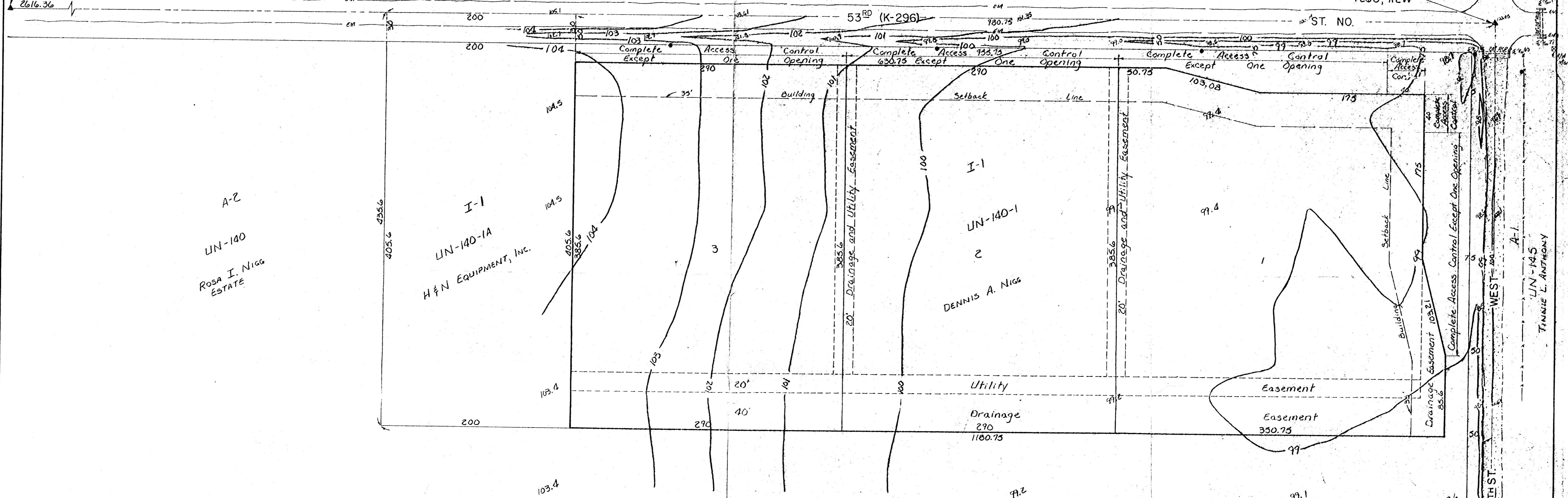


NW Cor. NE 1/4 Sec. 23
T26S, R2W
2616.36

SCALE 1"=50'

NE Cor. NE 1/4 Sec. 23
T26S, R2W



LEGEND

- Power Pole
- ▲ Monument (Found)
- Deadman to Pole
- Reinf. Conc. Box with Headwalls
- Edge of Asphalt Pavement
- Gravel Road & Driveways
- Barb-wire Fence
- ⊙ Bench Mark

NOTE:
Drainage Easements to be as Indicated.
Bench Mark: Top of SW Cor. of SW Headwall @ K-296 Hwy & 135th St. West, "C" Chised Square. B.M. Elev: 100.00

DENNIS NIGG COLWICH, KANSAS	
PRELIMINARY PLAT D.A. NIGG ADDITION SEAGWICK COUNTY, KANSAS	
CAMPBELL & CASTLE ENGINEERS WICHITA, KANSAS	DSG DR 02X CH
DATE FEBRUARY 1982	DWG FILE NO 8134-D-10089
APP	SHEET NO 1 OF 1