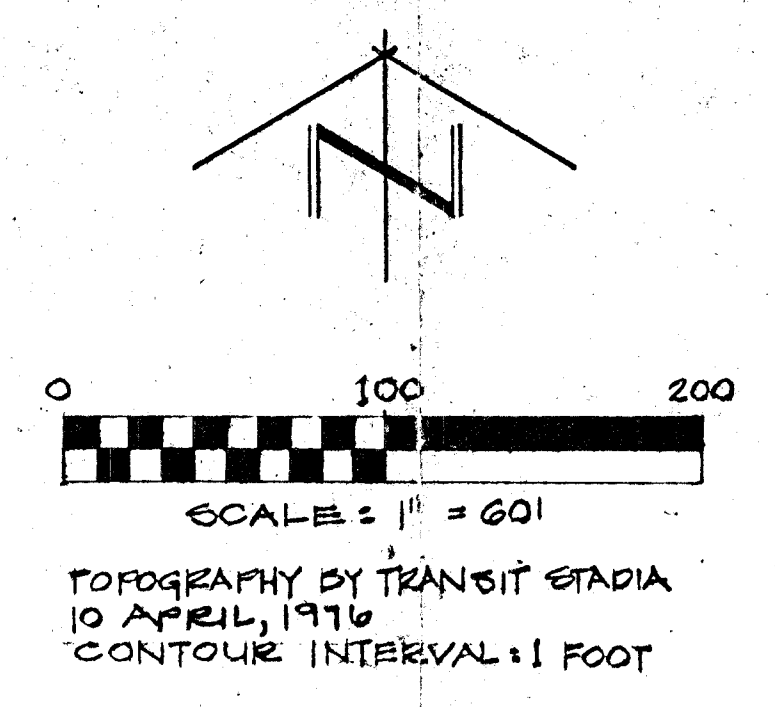
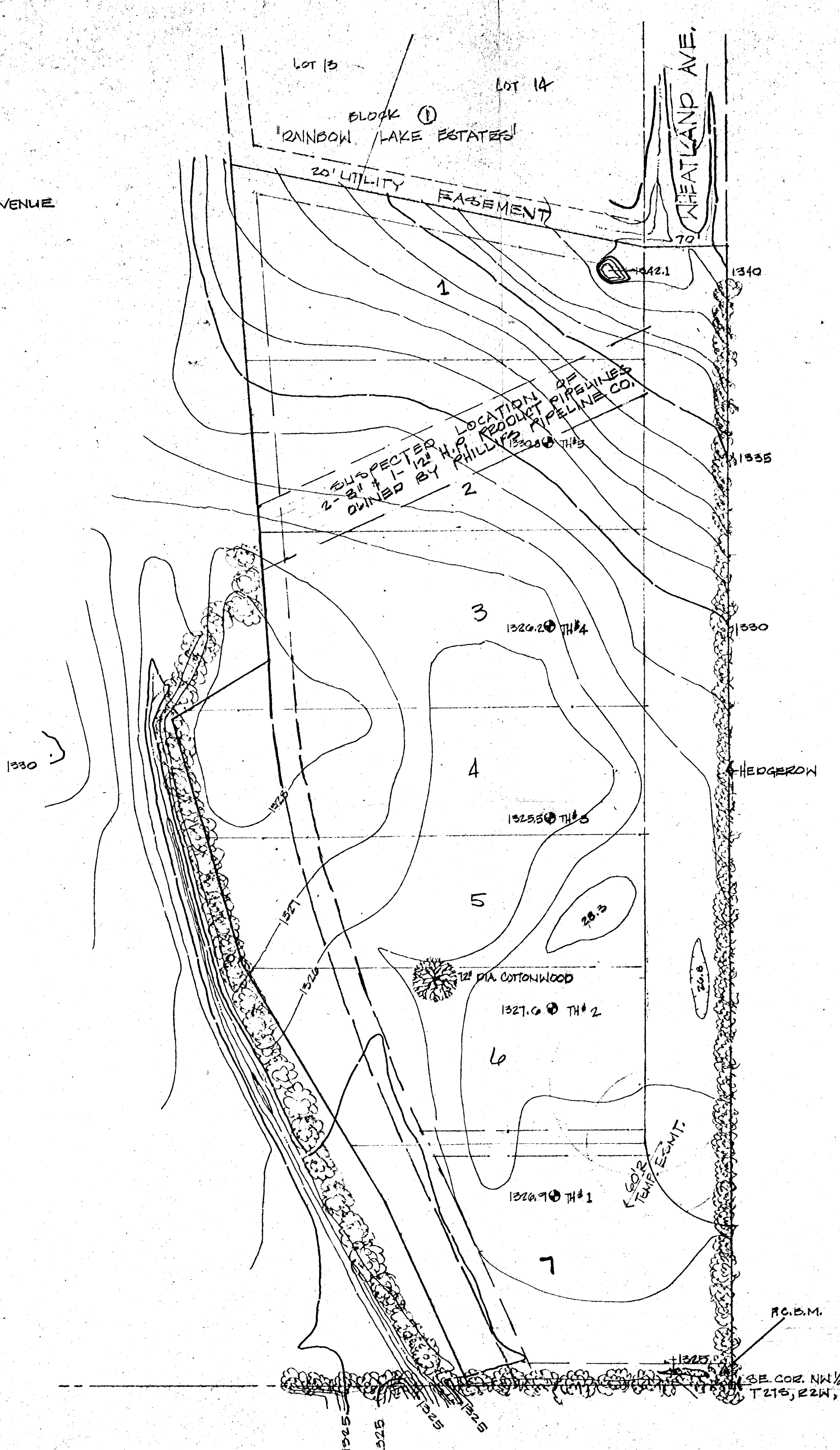


VICINITY SKETCH
 SEC. 24, T21S, R2W, 6TH PM.
 SCALE: 1" = 2000' ±



ROCK B.M. 604 GPK. ROOT HQ. TREE
 10' N. INTX HQ. N-S-E-W
 NEAR CTR. OF 24, 27S, 2 W
 ELEV. 1324.92 MSL.

SE. COR. NW 1/4 SEC. 24,
 T21S, R2W, 6TH PM.

SKETCH PLAN
'COUNTRY VILLAS'
 A SUBDIVISION IN THE NW 1/4 SEC. 24,
 T21S, R2W, 6TH PM. SEDGWICK COUNTY, KANSAS.
 OWNER & SUBDIVIDER:
CHARLES H. HALL
 P.O. BOX 1007, WICHITA, KANSAS 672
 SURVEYOR:
HALL & ASSOCIATES, INC.
 200 S. ROCK ROAD, WICHITA, KANSAS 67207

PROJECT: COUNTRY VILLAS	
LOCATION: NW 1/4 SEC. 24, T21S, R2W, 6TH PM. SEDGWICK COUNTY, KANSAS	
DRAWN BY: M.H.P.	DATE:
CHECKED BY:	DATE:
SHEET OF:	

HALL & ASSOCIATES

LAND SURVEYORS

WICHITA, KANSAS 67207

TELEPHONE 316-685-2804