



DATE OCT. 6, 1981
1"=100'

BM Chester 99' NE Cor. Head 011
207' W of 21st St & Wash Rd
E1 = 1351065

Existing zoning - R1 & RA
Proposed zoning - R1 overall

Owner and Subdivider:
Inland Investment Co. Inc.
200 Douglas Building
Wichita, Kansas 67202

Engineer:
Professional Engineering Consultants P.A.
Land Development Division
1440 E. English - Wichita, Kansas 67211

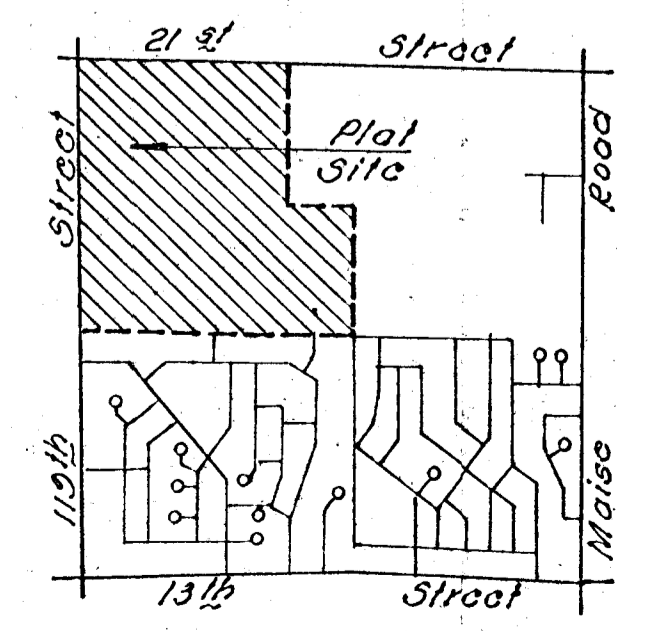
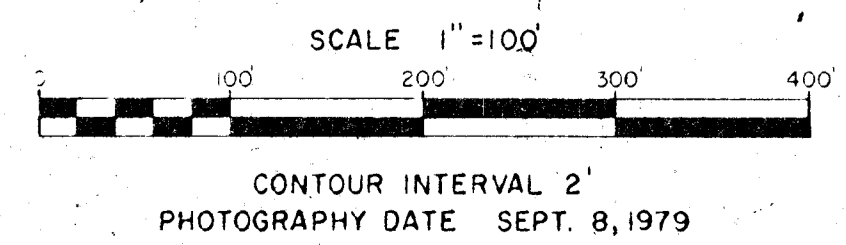
Topography - Sept. 8, 1979

Utilities:
Storm Sewers - Not Available
Sanitary " - 12" Main (Ex'tg)
Water Main - Ex'tg in 19th St. N.
Gas Main - Not Available
Pipe Lines - None
Tele Lines - U.S. in 21st St.
Power Lines - O.H. 12.5"

Note:
Drainage Plan on file with the Department of Engineering
as "Echo Hills 2nd Addition"

"COUNTRY VILLAGE ADDITION"

...PRELIMINARY PLAT...
(A REPLAT OF ECHO HILLS 2ND ADDITION)



VICINITY MAP
Scale: 1"=200'