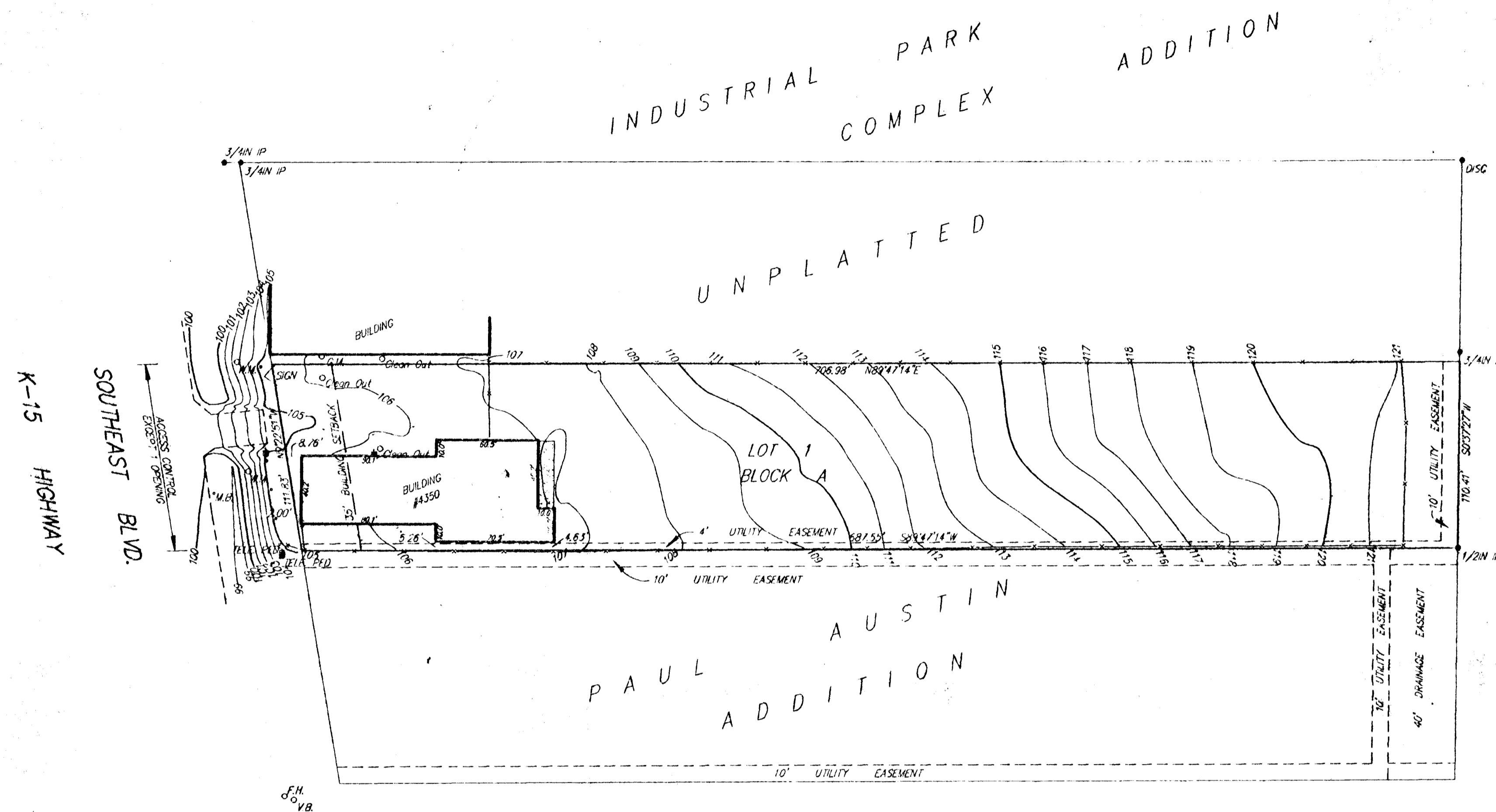


SKETCH PLAT
 PRELIMINARY PLAT
MORGAN SHEETMETAL ADDITION
 SEDGWICK COUNTY, KANSAS



LEGAL DESCRIPTION:

The south 110.4 feet of the north 229.2 feet of that part of the NE1/4 of the SW1/4 of Sec. 14, Twp. 28-S, R-1-E of the 6th P.M., Sedgwick County, Kansas, lying easterly of the K-15 Highway right-of-way, except the west 40.7 feet thereof for road.

MORGAN SHEETMETAL, INC.
 Jesse E. Morgan, III, President
 4350 Southeast Boulevard
 Wichita, Ks. 67210

NET SIZE:
 76,978.09 Sq. Ft. ±
 1.77 Acres ±

ELEVATION DATUM: ASSUMED