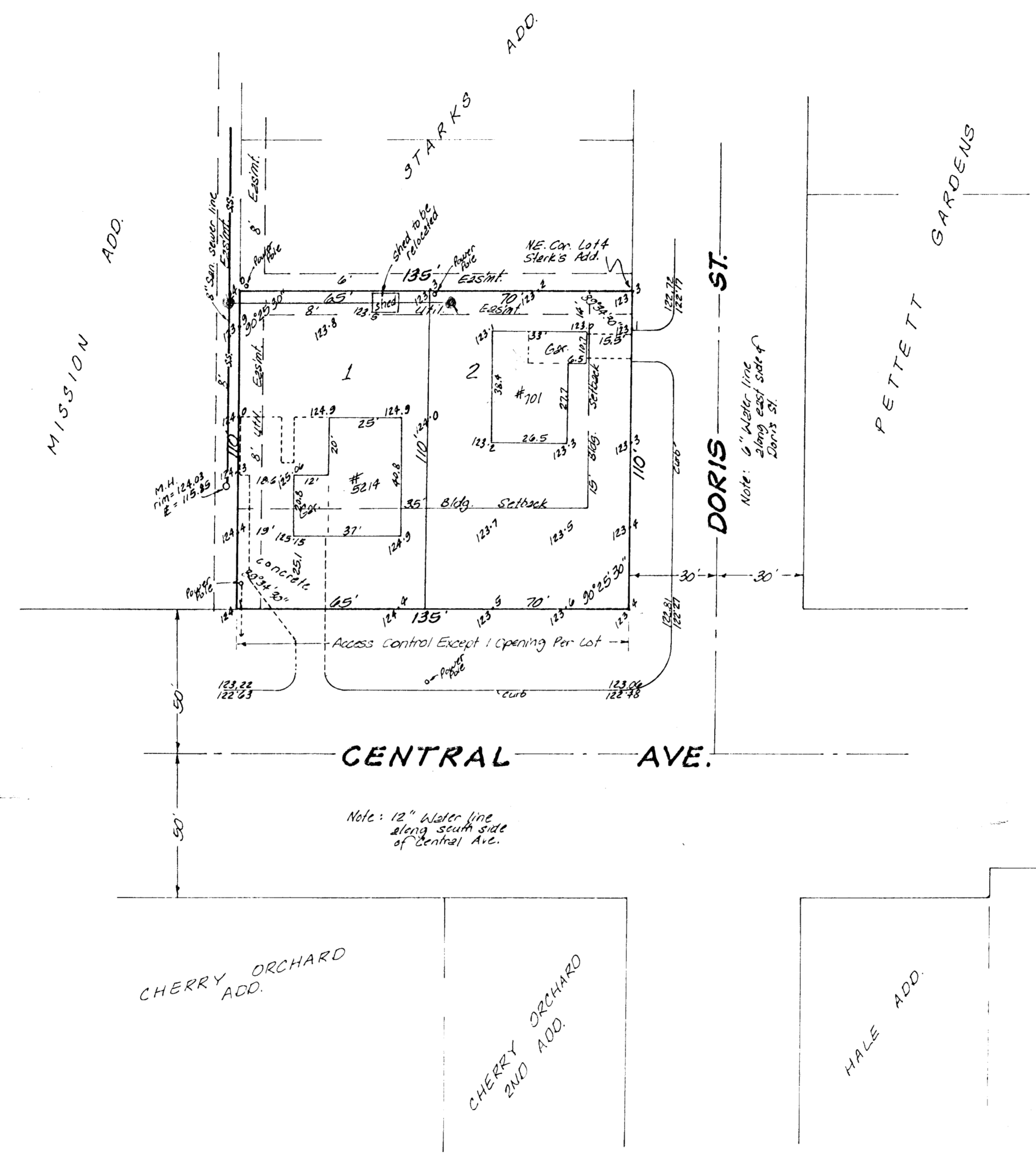




Bench mark:
 City disc, 34 feet east & 42
 feet north of centerline inter-
 section of Hoover & Central
 Elevation = 123.29 City Datum



**SKETCH PLAT
 STARK'S 2ND ADDITION**

LOTS 3 & 4, STARK'S ADDITION
 TO WICHITA, SEDGWICK COUNTY,
 KANSAS

LEWIS C. STARK