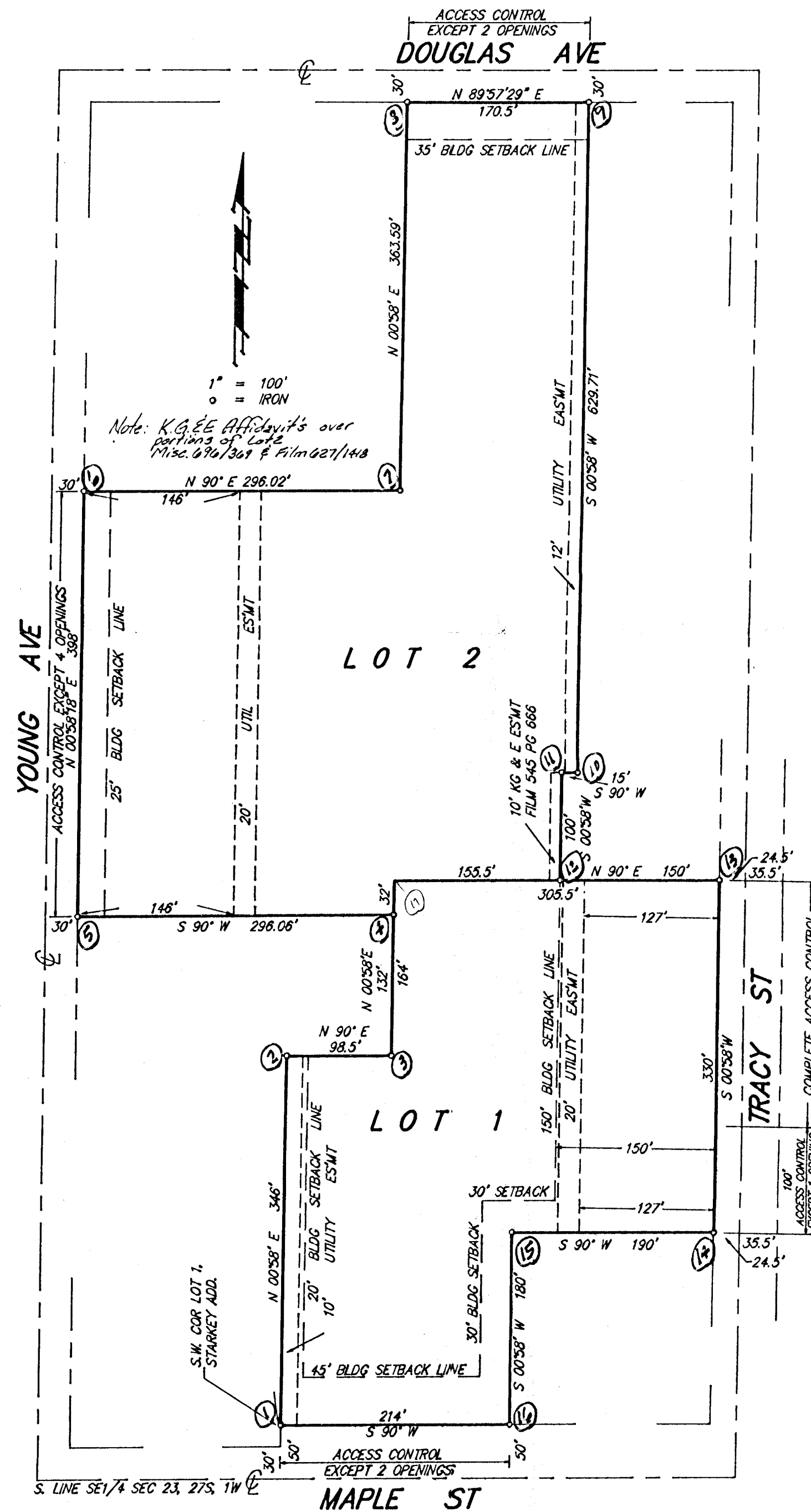


STARKEY DEVELOPMENT CENTER

AN ADDITION TO WICHITA, SEDGWICK COUNTY, KANSAS

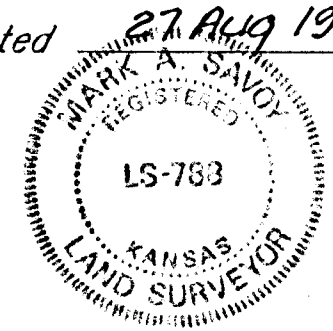


State of Kansas) SS We, Baughman Company, P.A., Surveyors in Sedgwick County) do hereby certify that we have surveyed and platted "STARKEY DEVELOPMENT CENTER", an Addition to Wichita, Sedgwick County, Kansas and that the accompanying plat is a true and correct exhibit of the property surveyed, described as and being a replat of the west 170.5 feet of Lots 1, 2, 3, 4, and 5 and Lot 6, except the east 150 feet of the north 100 feet thereof and except the south 200 feet thereof, and the east 98.5 feet of Lot 7, except the south 200 feet thereof, and the N1/2 of Lot 8 and all of Lot 9, McComas Acres, Sedgwick County, Kansas, and all of Lot 1, Starkey Addition, Wichita, Kansas.

All being situated in the SE1/4 of Sec. 23, Twp. 27-S, R-1-W of the 6th P.M., Sedgwick County, Kansas. Existing easements being vacated by virtue of K.S.A. 12-512(b).

Baughman Company, P.A.

Dated 27 Aug 1991



Mark A. Savoy
Mark A. Savoy Surveyor

Know all men by these presents that we, the undersigned, have caused the land described in the surveyors certificate to be platted into Lots to be known as "STARKEY DEVELOPMENT CENTER", an Addition to Wichita, Sedgwick County, Kansas. The utility easements are hereby granted as indicated for the construction and maintenance of all public utilities. All abutters rights of access to or from Maple St., over and across the south line of Lot 1 and to or from Tracy St., over and across the east line of Lot 1 and to or from Douglas Ave., over and across the north line of Lot 2 and to or from Young Ave., over and across the west line of Lot 2 are hereby granted to the City of Wichita, provided however that Lot 1 shall have access to Maple St. at two locations and that Lot 1 shall have access to Tracy St. at one location over the south 100 feet of the east line thereof and that Lot 2 shall have access to Douglas Ave. at two locations and that Lot 2 shall have access to Young Ave. at four locations, all as shall be determined by the City Engineer of the City of Wichita, Kansas.

Starkey Developmental Center, Inc.

William E. Brotton
Executive Director
William E. Brotton

State of Kansas) SS The foregoing instrument acknowledged before me, this 20th day of September 1991, by William E. Brotton, Executive Director of Starkey Developmental Center, Inc., on behalf of the corporation.

Richard E. Young
Notary Public

My App't. Exp. 2-3-95

This plat of "STARKEY DEVELOPMENT CENTER", an Addition to Wichita, Sedgwick County, Kansas, has been submitted to and approved by the Wichita-Sedgwick County Metropolitan Planning Commission, Wichita, Kansas.

Dated this ___ day of ___ 1991.

Wichita-Sedgwick County Metropolitan Area Planning Commission.

George D. Sherman
Chairman

Marvin S. Krout
Secretary

This plat approved and all dedications shown hereon accepted by the City Council of the City of Wichita, Kansas, this ___ day of ___ 1991.

Bob Knight
Mayor

Pat Burnett
Deputy City Clerk

Entered on transfer record this ___ day of ___ 1991.

Don Wright
County Clerk

State of Kansas) SS This is to certify that this plat has been filed for record in the office of the Register of Deeds, this ___ day of ___ 1991, at ___ o'clock ___ M., and is duly recorded.

Pat Kettler
Register of Deeds

Ed Resa
Deputy