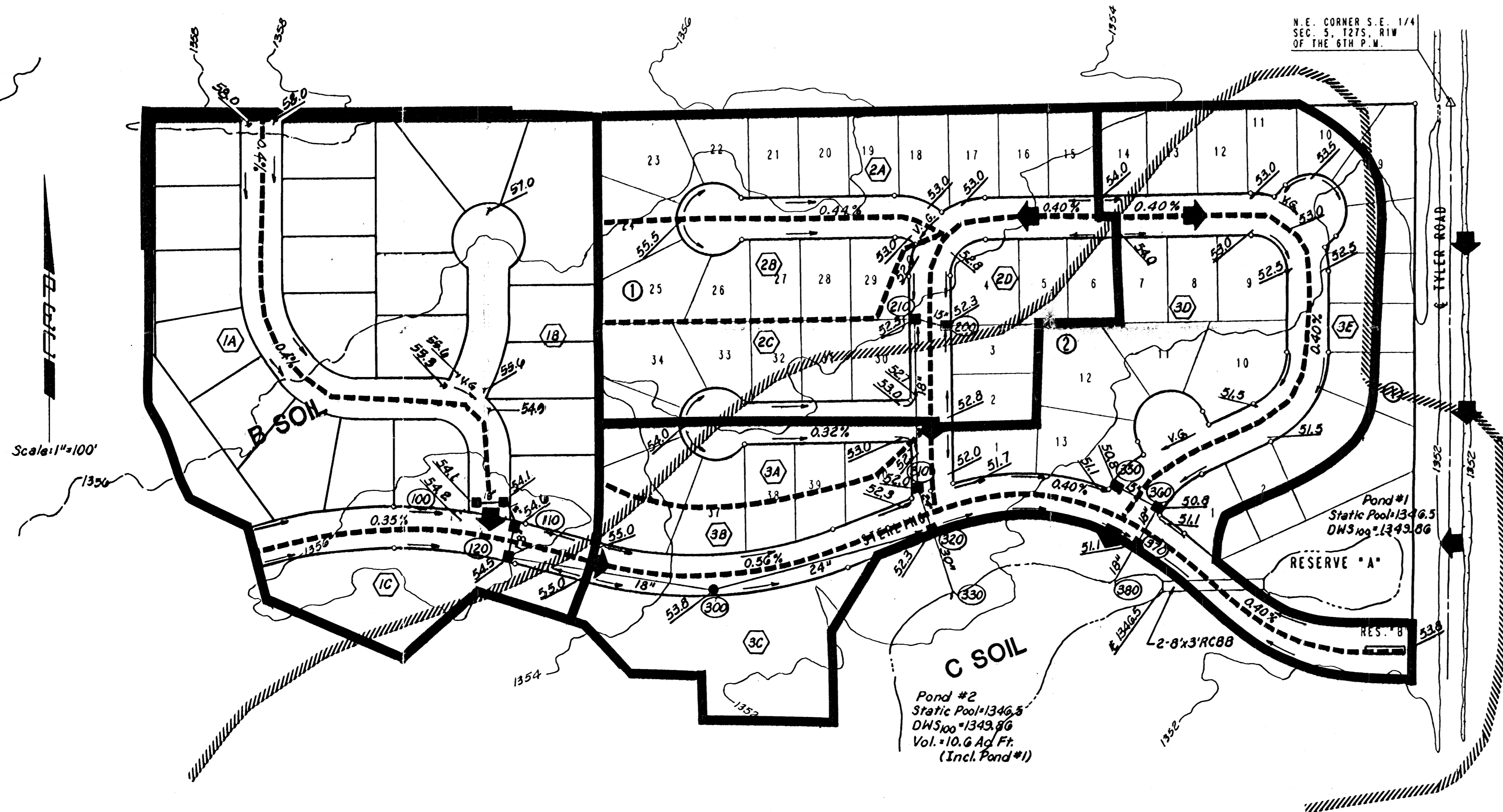


STERLING FARMS 2ND ADDITION & 4TH ADD. TO WICHITA, SEDGWICK COUNTY, KANSAS



Scale: 1"=100'

N.E. CORNER S.E. 1/4
SEC. 5, T27S, R1W
OF THE 6TH P.M.

DA = 40 Ac.
CN = 71
Q₁₀₀ = 107 cfs
Lag = 0.6 hrs.

- ▬ Drainage Basin Boundary
- - - Drainage Sub-Basin Boundary
- ▨ Hydrologic Soil Group Boundary
- Ⓧ Drainage Basin Number
- Ⓜ Storm Sewer Node No.
- 0.4% Minor Storm Flow & Street Grade
- ➔ Major Storm Flow
- Proposed SWS Inlet
- Proposed SWS Manhole
- V.G. Valley Gutter
- 51.5 Top of Curb Elev. (Add 1300 for MSL)

Notes: All streets to have 0.5% Combined
Curb & Gutter.
Minimum Pad Elev. Lots 1-9 1352.0 MSL
Block 1, 2nd. Add. 104.0 City
Drainage Computations Previously
Submitted for Sterling Farms 2nd. Add.

DA = 53 Ac.
CN = 69
Q₁₀₀ = 163 cfs
Lag = 0.4 hr.



4.11.94

B.M. - Standard City B.M. Disc 38 Ft. West &
30 Ft. South of & Intersection of
21st St. N. & Tyler Rd. Elev. = 1357.35 MSL
163.95 City
B.M. - "T" Post located 20 Ft. South of Northeast
Corner Lot 21, Block 0, Sterling Farms
Addition. Elev. = 1354.93 MSL
167.59 City

1 - Revised 4-11-04 4th Add.

102 'A'
DRAINAGE PLAN