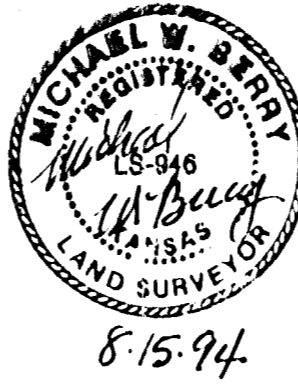
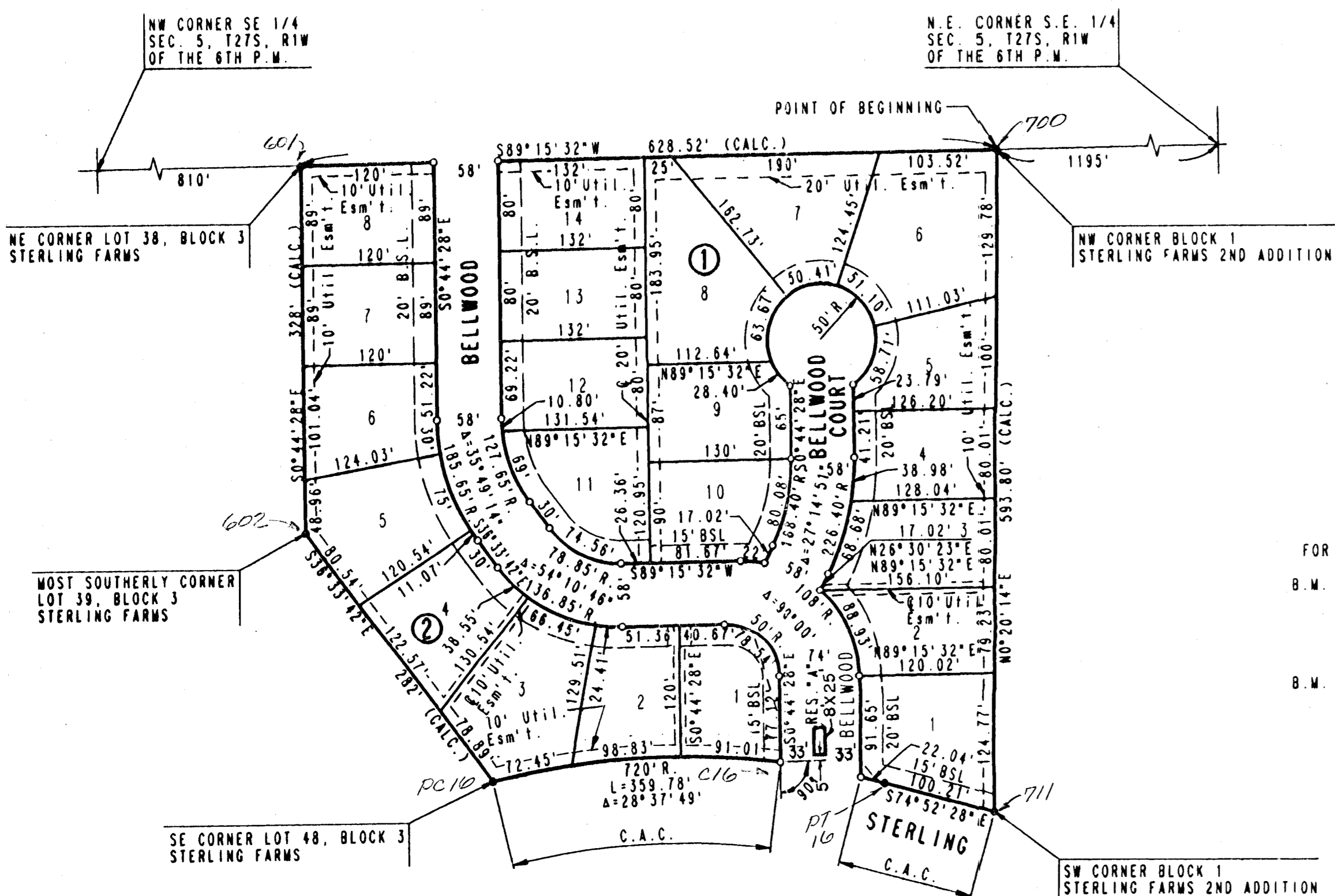
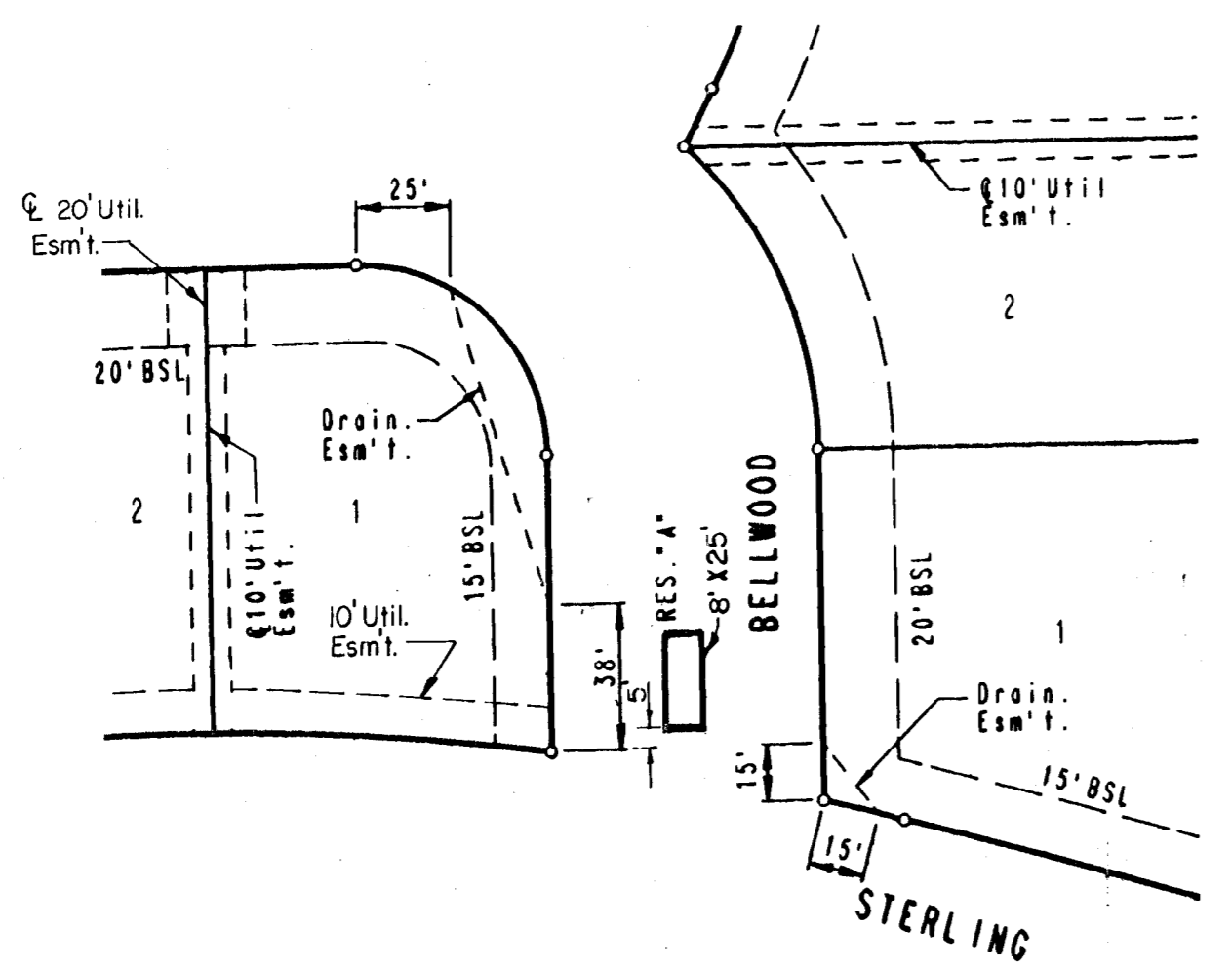


STERLING FARMS 4TH ADDITION TO WICHITA, SEDGWICK COUNTY, KANSAS



SCALE: 1"=100'

- = IRON FOUND
- = 3/4" IRON SET
- B.S.L. = BUILDING SETBACK LINE
- C.A.C. = COMPLETE ACCESS CONTROL
- FOR ADDITIONAL BUILDING SETBACKS SEE C.U.P. DP-178.
- B.M. - CITY STANDARD B.M. DISC 38" WEST AND 90" SOUTH OF THE CENTERLINE INTERSECTION OF 21ST STREET NORTH AND TYLER ROAD. ELEV. -169.95 CITY DATUM ELEV. -11357.35 M.S.L.
- B.M. - CHISELED "O" AT S W CORNER TOP HEADWALL RCBC WEST OF KEITH. ELEV. -161.28 CITY DATUM ELEV. -11348.46 M.S.L.



STATE OF KANSAS)
) SS
COUNTY OF SEDGWICK)

I, MICHAEL W. BERRY, A REGISTERED LAND SURVEYOR IN AFORESAID STATE AND COUNTY, DO HEREBY CERTIFY THAT ON THIS 15th DAY OF August, 1994, I HAVE CAUSED TO BE SURVEYED AND PLATTED STERLING FARMS 4TH ADDITION TO SEDGWICK COUNTY, KANSAS, INTO LOTS, BLOCKS, STREETS AND A RESERVE. THE SAME BEING A TRACT OF LAND DESCRIBED AS:

BEGINNING AT A POINT IN THE NORTH LINE AND 1195.00 FEET WEST OF THE N.E. CORNER OF THE S.E. 1/4 OF SECTION 5, TOWNSHIP 27 SOUTH, RANGE 1 WEST OF THE 6TH P.M.; SAID POINT ALSO BEING THE N.W. CORNER OF BLOCK 1 AS PLATTED IN STERLING FARMS 2ND ADDITION TO WICHITA, SEDGWICK COUNTY, KANSAS; THENCE CONTINUING ALONG THE NORTH LINE OF SAID S.E. 1/4 BEARING S89°15'32"W A DISTANCE OF 628.52 FEET TO THE N.E. CORNER OF LOT 38, BLOCK 3, AS PLATTED IN STERLING FARMS, AN ADDITION TO WICHITA, SEDGWICK COUNTY, KANSAS; THENCE BEARING S0°44'28"E ALONG THE EAST LINE OF LOTS 38 AND 39 IN SAID BLOCK 3 A DISTANCE OF 328.00 FEET TO THE MOST SOUTHERLY CORNER OF SAID LOT 38; THENCE BEARING S36°33'42"E ALONG THE EASTERLY LINE OF LOTS 46, 47, AND 48 IN SAID BLOCK 3 A DISTANCE OF 282.00 FEET TO THE S.E. CORNER OF SAID LOT 48 ON THE NORTH LINE OF STERLING STREET AND TO A POINT ON A CURVE TO THE RIGHT HAVING A RADIUS 720.00 FEET AND A CHORD OF 355.05 FEET BEARING S89°11'22"E; THENCE ALONG SAID CURVE BEING THE NORTH LINE OF STERLING STREET AS PLATTED IN SAID STERLING FARMS AND STERLING FARMS 2ND ADDITION, THROUGH A CENTRAL ANGLE OF 28°37'49" AN ARC DISTANCE OF 359.78 FEET; THENCE BEARING S74°52'28"E A DISTANCE OF 100.21 FEET TO THE S.W. CORNER OF BLOCK 1 IN SAID STERLING FARMS 2ND ADDITION; THENCE BEARING N0°50'14"E ALONG THE WEST LINE OF SAID BLOCK 1, A DISTANCE OF 593.80 FEET TO THE POINT OF BEGINNING.

Michael W. Berry
MICHAEL W. BERRY, P.E. NO. 3946
PROFESSIONAL ENGINEERING CONSULTANTS, P.A.

KNOW ALL MEN BY THESE PRESENTS THAT WE, THE UNDERSIGNED PROPERTY OWNERS OF THE LAND AS ABOVE SET FORTH IN THE SURVEYOR'S CERTIFICATE HAVE CAUSED THE LAND TO BE SURVEYED AND PLATTED INTO LOTS, BLOCKS, STREETS AND A RESERVE. THE SAME TO BE KNOWN AS STERLING FARMS 4TH ADDITION TO WICHITA, SEDGWICK COUNTY, KANSAS.

EASEMENTS AS INDICATED FOR THE CONSTRUCTION AND MAINTENANCE OF PUBLIC UTILITIES AND DRAINAGE ARE HEREBY GRANTED. THE STREETS ARE HEREBY DEDICATED TO AND FOR THE USE OF THE PUBLIC. ALL ABUTTER'S RIGHTS OF ACCESS TO AND FROM STERLING STREET OVER AND ACROSS THE SOUTH LINE OF LOT 1, BLOCK 1 AND SOUTH LINE OF LOTS 1, 2, AND 3, BLOCK 2, AS SHOWN, ARE HEREBY GRANTED TO THE CITY OF WICHITA.

RESERVE "A" IS HEREBY PLATTED FOR LANDSCAPING, ENTRY MONUMENTS, DRAINAGE AND AN IRRIGATION SYSTEM.

RESERVE "A" SHALL BE SUBJECT TO THE RESTRICTIVE CONVENANTS ESTABLISHED BY THE DECLARATION OF LANDOWNERS' ASSOCIATION AGREEMENTS AND SHALL BE OWNED AND MAINTAINED BY A LANDOWNERS' ASSOCIATION TO BE FORMED WITHIN STERLING FARMS 4TH ADDITION TO WICHITA, SEDGWICK COUNTY, KANSAS.

FOR ADDITIONAL BUILDING SETBACKS SEE C.U.P. DP-178.

OWNER: KESSLER ENTERPRISES, A TRUST
BY *Lucille Meyer*, TRUSTEE
LUCILLE MEYER
BY *William J. Walsh Jr.*, TRUSTEE
WILLIAM J. WALSH, JR.

STATE OF KANSAS)
) SS
COUNTY OF SEDGWICK)

BE IT REMEMBERED THAT ON THIS 15th DAY OF August, 1994, BEFORE ME, A NOTARY PUBLIC IN AFORESAID STATE AND COUNTY, CAME LUCILLE MEYER, AND WILLIAM J. WALSH, JR., TRUSTEES OF KESSLER ENTERPRISES, A TRUST, TO ME PERSONALLY KNOWN TO BE THE SAME PERSONS WHO EXECUTED THE FOREGOING INSTRUMENT OF WRITING AND DULY ACKNOWLEDGED THE EXECUTION OF SAID VOLUNTARY ACT AND DEED OF SAID TRUST, IN TESTIMONY WHEREOF I HAVE HERETO SET MY HAND AND AFFIXED MY NOTARIAL SEAL THE DAY AND YEAR ABOVE WRITTEN.

Kim D. Legion, NOTARY PUBLIC
KIM D. LEGION
MY COMMISSION EXPIRES 4/10/95

THIS PLAT HAS BEEN SUBMITTED TO AND APPROVED BY THE WICHITA-SEDGWICK COUNTY METROPOLITAN AREA PLANNING COMMISSION, WICHITA, KANSAS. DATE THIS _____ DAY OF _____, 1994.

_____, CHAIRMAN
JAMES D. WINER
_____, SECRETARY
WARVIN S. KROUT

THE PLAT APPROVED AND ALL DEDICATIONS SHOWN HEREON ARE ACCEPTED BY THE CITY COUNCIL OF THE CITY OF WICHITA, KANSAS. DATED THIS _____ DAY OF _____, 1994.

_____, MAYOR
ELWA BROADFOOT
_____, DEPUTY CITY CLERK
PAT BURNETT

ENTERED ON TRANSFER RECORD THIS _____ DAY OF _____, 1994.
_____, COUNTY CLERK
SUSAN E. CROCKETT-SPOON

THIS IS TO CERTIFY THAT THIS INSTRUMENT WAS FILED FOR RECORD IN THE REGISTER OF DEEDS OFFICE AT _____, MO., ON THIS _____ DAY OF _____, 1994.

_____, REGISTER OF DEEDS
PAT KETTLER
_____, DEPUTY
ED RESA