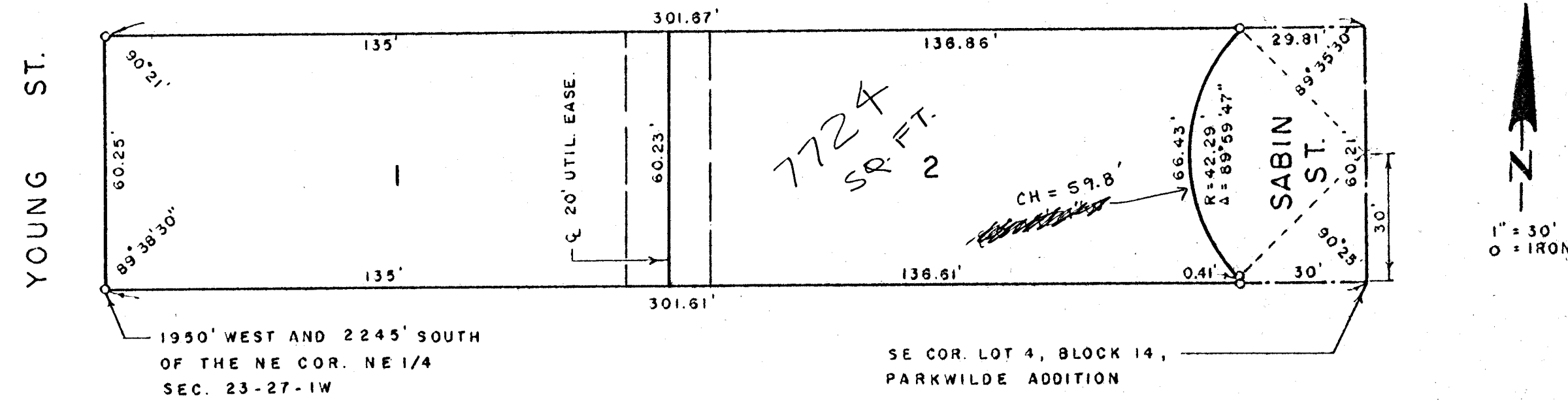


CHESTER D. STEPHENSON ADDITION

WICHITA, SEDGWICK COUNTY, KANSAS



State of Kansas, County of Sedgwick, SS.

I, Lowell D. High, Land Surveyor in the State and County do hereby certify that I have surveyed and platted "CHESTER D. STEPHENSON ADDITION", Wichita, Sedgwick County, Kansas and that the accompanying plat is A REPLAT OF and a true and correct exhibit of said survey described as follows: The S 1/2 of Lot 4, Block 14, Parkwilde Addition to Wichita, Sedgwick County, Kansas.

Lowell D. High, Land Surveyor

Know all men by these presents that we, Chester D. Stephenson and Neva M. Stephenson, husband and wife, have caused the land described in the Land Surveyor's certificate to be platted into lots and a street to be known as "CHESTER D. STEPHENSON ADDITION", Wichita, Sedgwick County, Kansas. The street is hereby dedicated to and for the use of the public. The utility easement as indicated on the plat is hereby granted for the construction and maintenance of all public utilities.

Chester D. Stephenson _____
Neva M. Stephenson

State of Kansas, County of Sedgwick, SS.

The foregoing instrument was acknowledged before me this _____ day of _____, 19____, by Chester D. Stephenson and Neva M. Stephenson, husband and wife.

Notary Public

My Commission expires: _____

This plat of "CHESTER D. STEPHENSON ADDITION", Wichita, Sedgwick County, Kansas has been submitted to and approved by the Wichita-Sedgwick County Metropolitan Area Planning Commission, Wichita, Kansas.

Dated this _____ day of _____, 19____.

Wichita-Sedgwick County Metropolitan
Area Planning Commission

William J. Goebel, Chairman

Robert A. Lakin, Secretary

This plat approved and all dedications shown hereon accepted by the Board of City Commissioners of the City of Wichita, Kansas, this _____ day of _____, 19____.

Robert G. Knight, Mayor

Donald C. Gisick, City Clerk

This plat approved and all dedications shown hereon accepted by the Board of County Commissioners of Sedgwick County, Kansas, this _____ day of _____, 19____.

Everett Patrick, Chairman

Tom Scott, Commissioner

ATTEST: _____, Commissioner
Donald E. Gragg

Dorothy K. White, County Clerk

Entered on transfer record this _____ day of _____, 19____.

Dorothy K. White, County Clerk

State of Kansas, County of Sedgwick, SS.

This is to certify that this instrument was filed for record in the Register of Deeds Office, at _____ o'clock _____ m., on the _____ day of _____, 19____.

Betta F. McCart, Register of Deeds

Pat Kettler, Deputy