

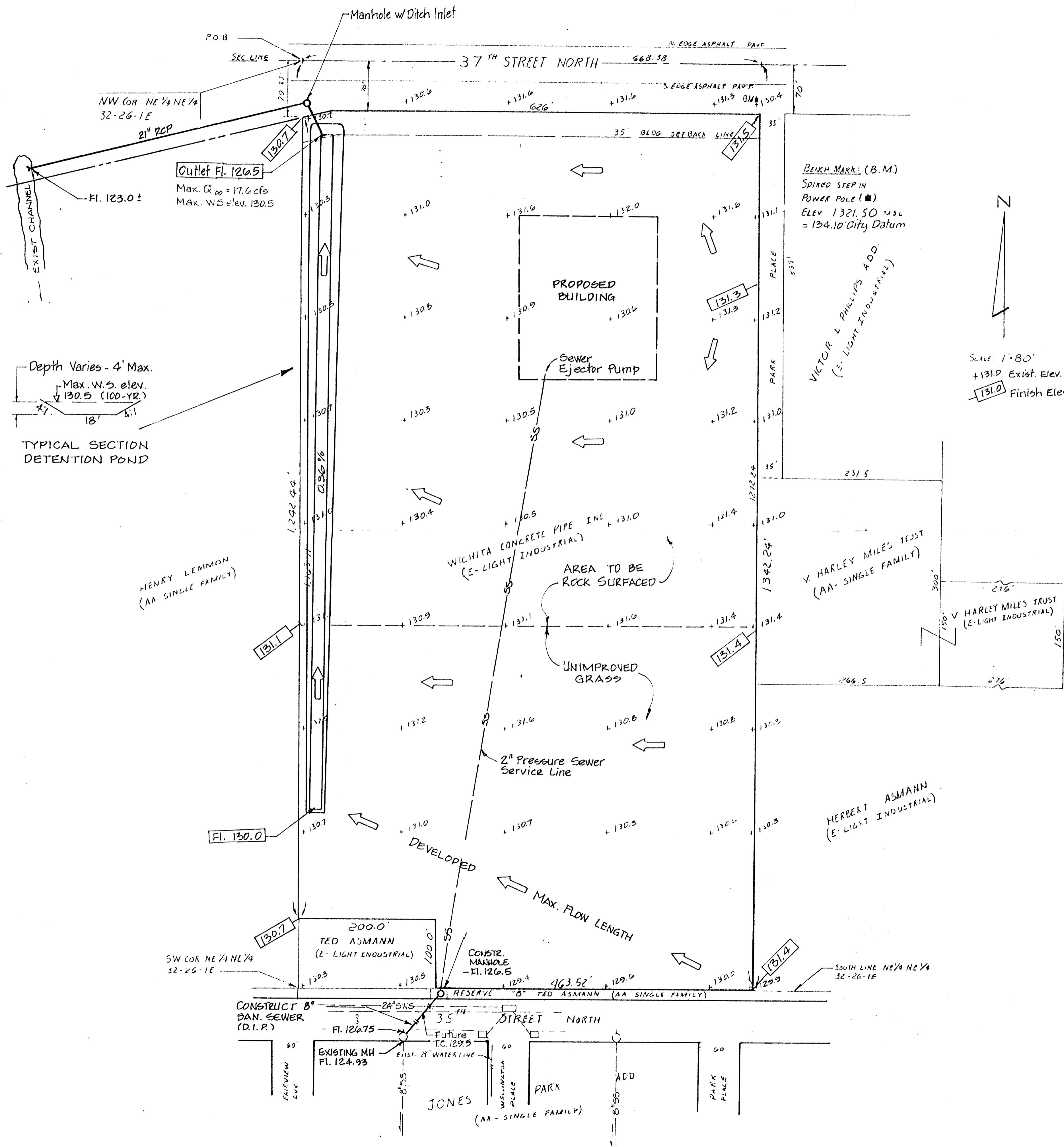
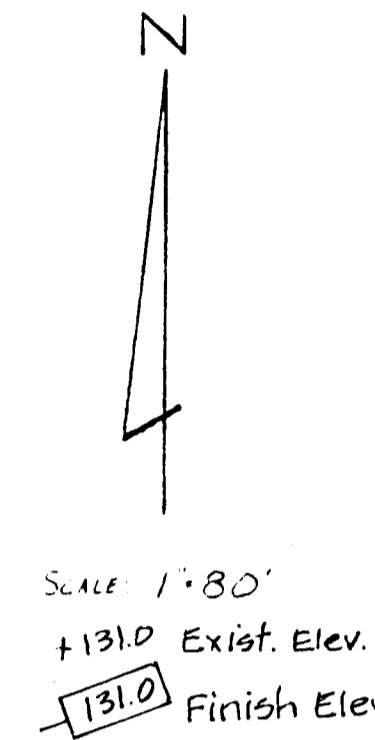
PRELIMINARY PLAT

B. R. STEPHENSON ADDITION

LEGAL DESCRIPTION:

A tract of land in the Northeast Quarter of the Northeast Quarter of Section 32, Township 26 South, Range 1 East of the 6TH P.M., Sedgwick County, Kansas.

Beginning at the Northwest Corner of said Northeast Quarter of the Northeast Quarter; thence N 90° 00' 00" E (assumed) along the North line of said Northeast Quarter of the Northeast Quarter for 668.38 feet; thence S 00° 41' 51" E for 1,342.24 feet to the South line of said Northeast Quarter of the Northeast Quarter; thence S 89° 59' 17" W along said South line for 463.52 feet; thence N 00° 54' 18" W for 100.0 feet; thence S 89° 59' 17" W for 200.0 feet; thence N 00° 54' 18" W for 1,242.44 feet to the Point of Beginning. Said tract containing 19.0 acres exclusive of Street Right-of-Way.

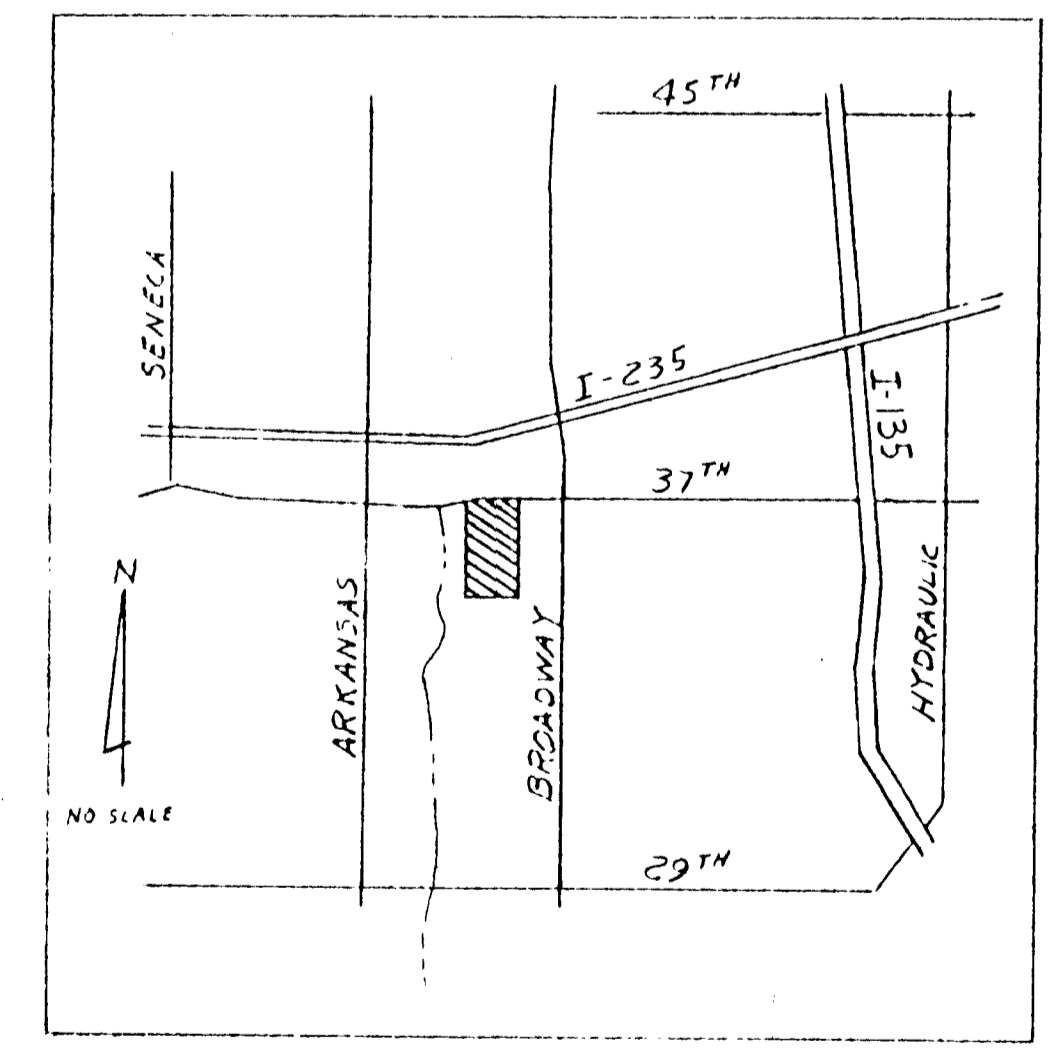


SANITARY SEWER AND DRAINAGE PLAN

See Runoff Calculations 10-23-91
REV. 10-25-91

BAUGHMAN COMPANY P. A.	SURVEYING & ENGINEERING	
	316/292-7271 • 315 ELLIS • WICHITA, KANSAS 67211	

D.A. = 19.5 Ac.
Undeveloped Q₁₀₀ = 17.6 cfs
Developed Q₁₀₀ = 29.9 cfs
Reqd Detention = 1.8 Ac.Ft.



VICINITY MAP

PRELIMINARY PLAT

OWNER-SUBDIVIDER: WICHITA CONCRETE PIPE, INC. PO Box 369, McPherson, KS 67460 TELE: 316-241-4362		
SCALE: 1" = 80'	APPROVED BY:	DRAWN BY:
DATE: 9-6-91		
LAND SURVEYOR: MACON CO., ENGINEERS & SURVEYORS 851 N. WEST ST, SUITE 100, WICHITA, KS 67203 PH: 316-269-2112		
	DRAWING NUMBER:	
	2678	

NAME OF PROPOSED SUBDIVISION:
B. R. STEPHENSON ADDITION