

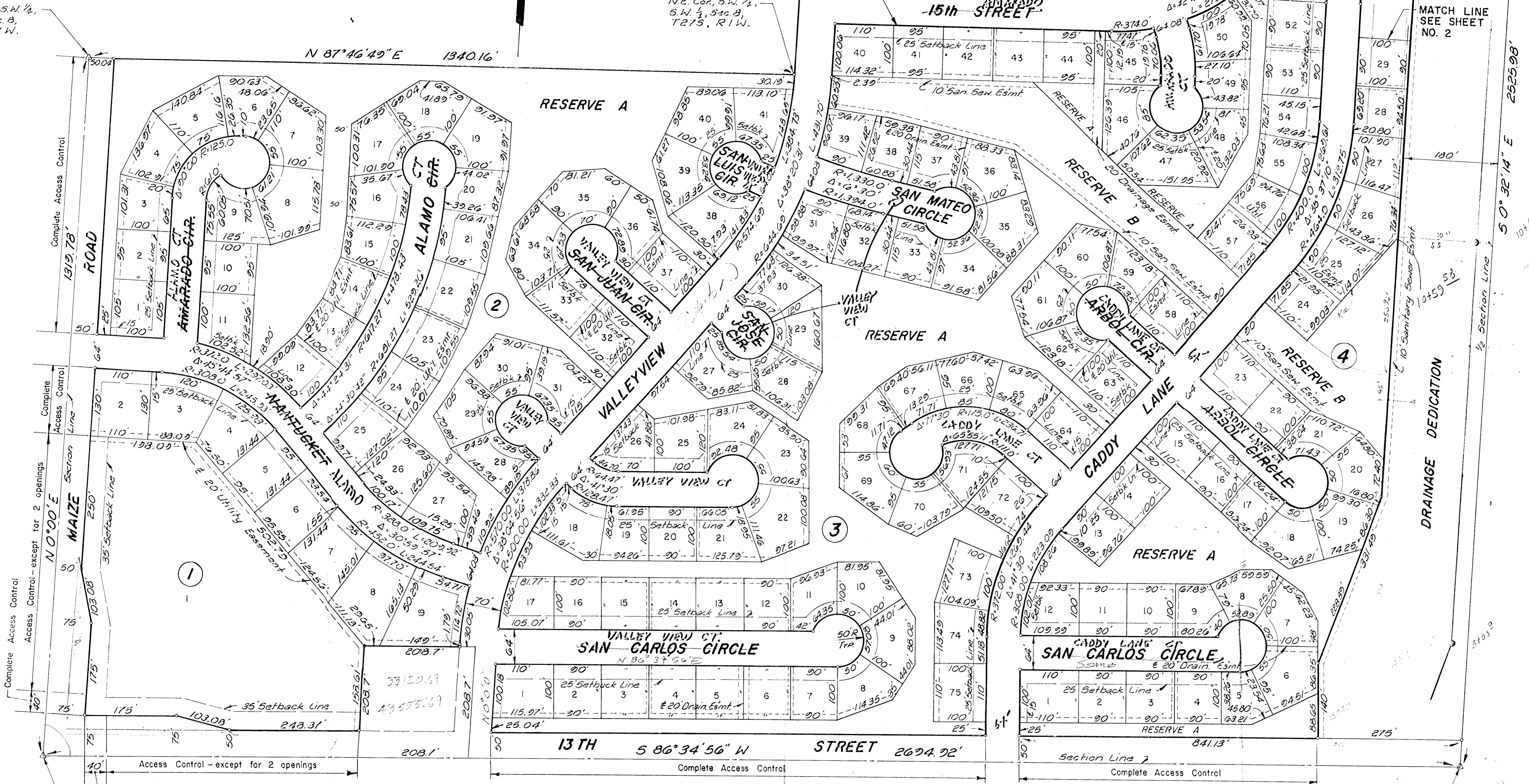
AMARADO ESTATES

AN ADDITION TO WICHITA, SEDGWICK COUNTY, KANSAS

SCALE: 1"=100'

N.W. Cor., S.W. 1/4, S.W. 1/4, Sec. 8, T21S, R1W.

N.E. Cor., S.W. 1/4, S.W. 1/4, Sec. 8, T21S, R1W.



S.W. Cor., S.W. 1/4, Sec. 8, T21S, R1W of 6th PM. (Iron in Thimble)

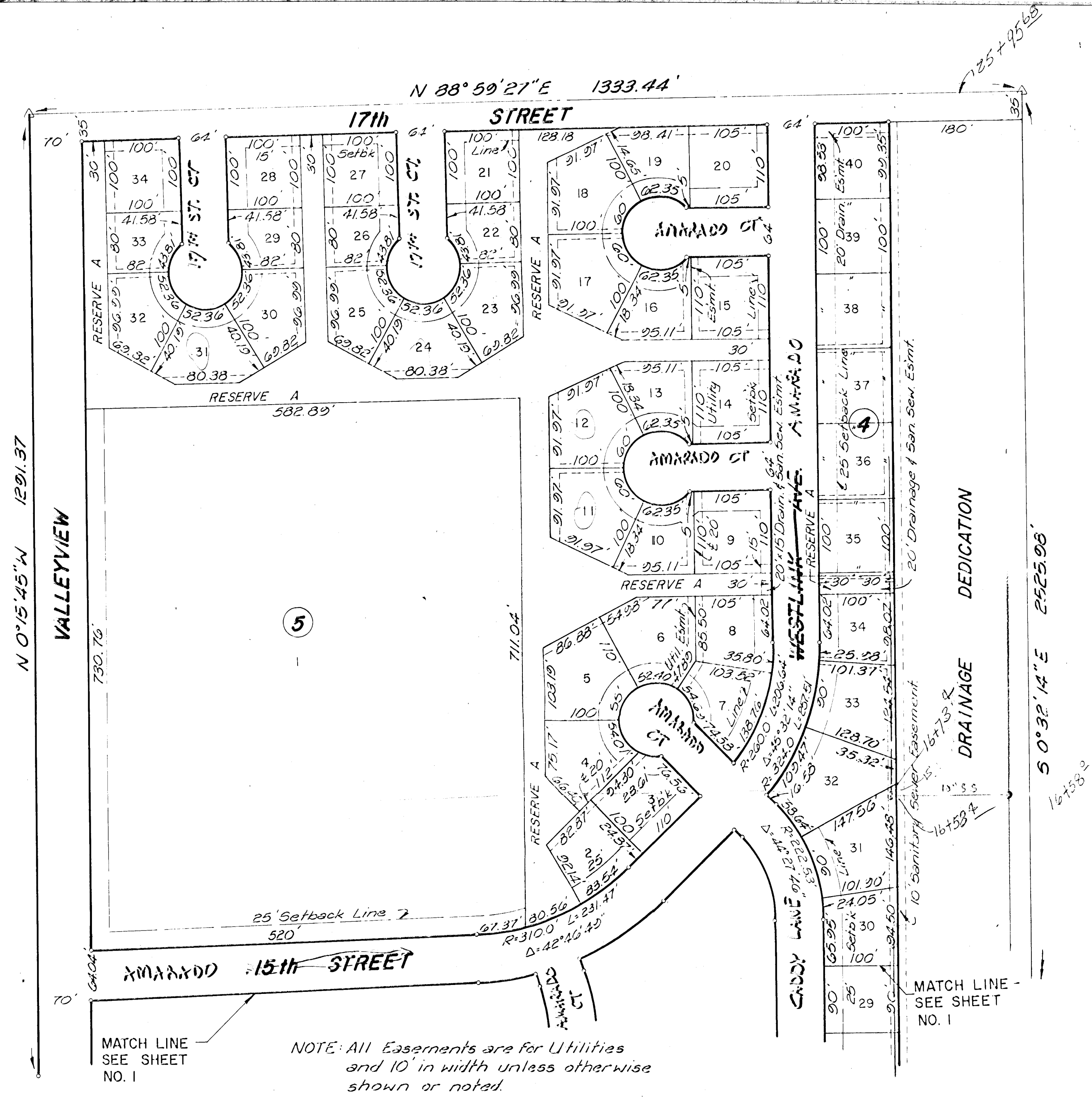
NOTE: All Easements are for Utilities and 10' in width unless otherwise shown or noted.

S.E. Cor., S.W. 1/4, Sec. 8, T21S, R1W. (Iron in Thimble)

Bl. & Bas. Plat.
CHECK SET
8-13-74
SHEET 1 OF 2

Return to Dancy

AMARADO ESTATES
AN ADDITION TO
WICHITA, SEDGWICK COUNTY, KANSAS



SCALE: 1"=100'

MATCH LINE
SEE SHEET
NO. 1

NOTE: All Easements are for Utilities
and 10' in width unless otherwise
shown or noted.

SSS 10' N FE
SS 3' S FE

MATCH LINE -
SEE SHEET
NO. 1