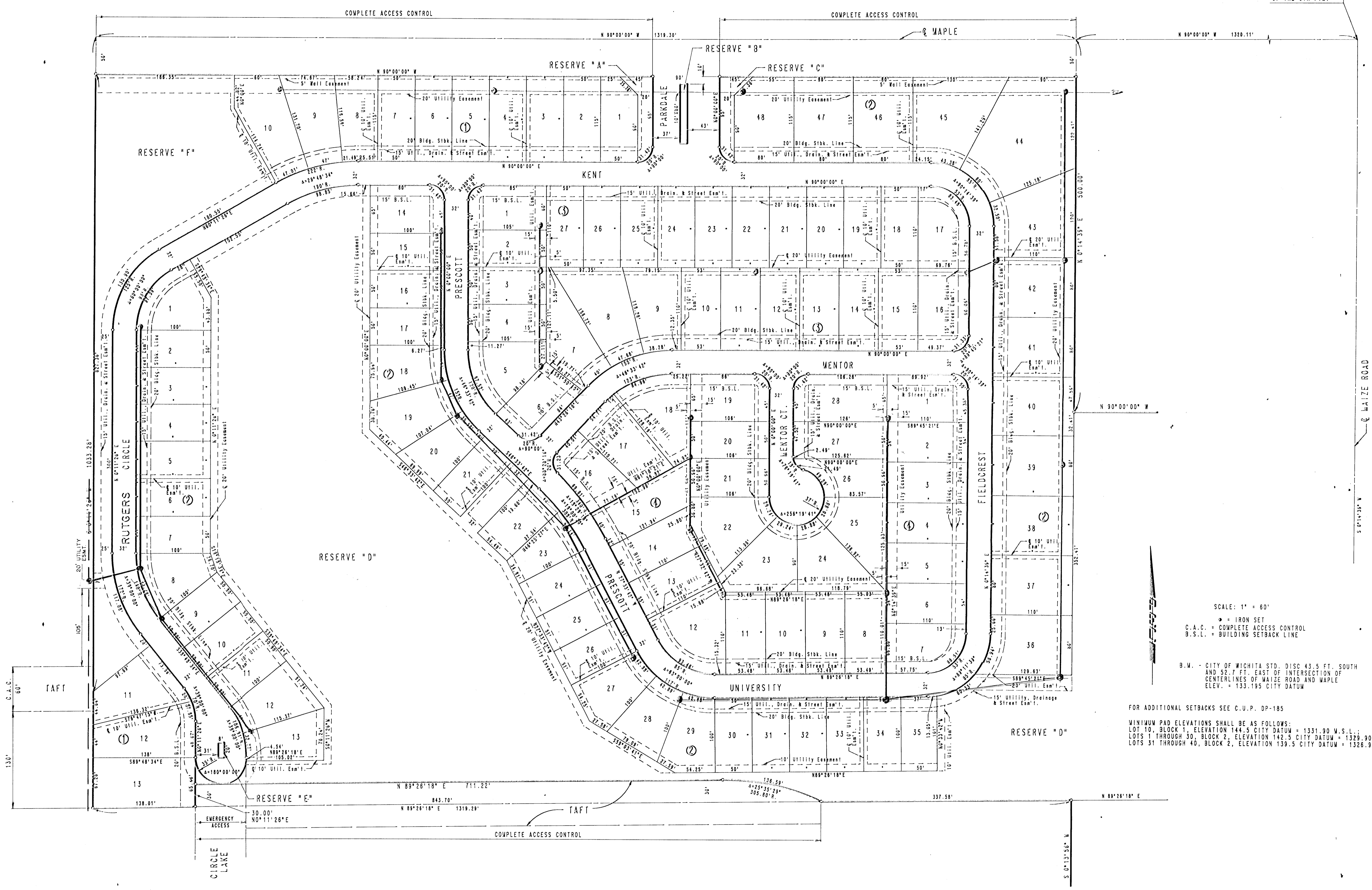


SUMMERFIELD III

AN ADDITION TO WICHITA, SEDGWICK COUNTY, KANSAS

N.E. COR.
SEC. 30, T27S, R1W
OF THE 6TH P.M.



SCALE: 1" = 60'
 ● = IRON SET
 C.A.C. = COMPLETE ACCESS CONTROL
 B.S.L. = BUILDING SETBACK LINE

B.M. - CITY OF WICHITA STD. DISC 43.5 FT. SOUTH
 AND 52.7 FT. EAST OF INTERSECTION OF
 CENTERLINES OF MAIZE ROAD AND MAPLE
 ELEV. = 133.195 CITY DATUM

FOR ADDITIONAL SETBACKS SEE C.U.P. DP-185
 MINIMUM PAD ELEVATIONS SHALL BE AS FOLLOWS:
 LOT 10, BLOCK 1, ELEVATION 144.5 CITY DATUM = 1331.90 W.S.L.;
 LOTS 1 THROUGH 30, BLOCK 2, ELEVATION 142.5 CITY DATUM = 1329.90 W.S.L.
 LOTS 31 THROUGH 40, BLOCK 2, ELEVATION 139.5 CITY DATUM = 1326.90 W.S.L.