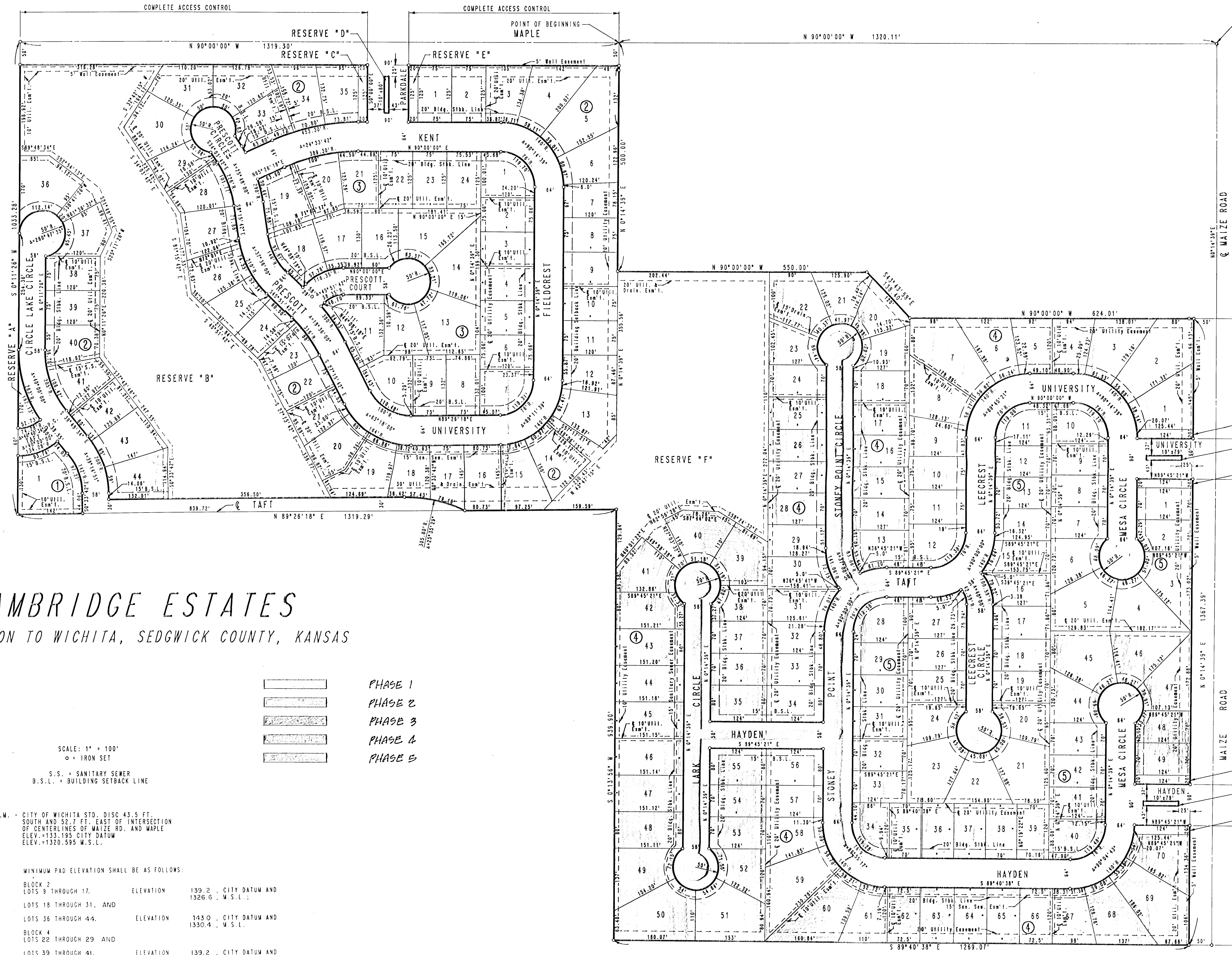


N.E. COR. SEC. 30, T27S,
R1W OF THE 6TH P.M.



CAMBRIDGE ESTATES

AN ADDITION TO WICHITA, SEDGWICK COUNTY, KANSAS

SCALE: 1" = 100'
 ○ = IRON SET
 S.S. = SANITARY SEWER
 B.S.L. = BUILDING SETBACK LINE

- PHASE 1
- PHASE 2
- PHASE 3
- PHASE 4
- PHASE 5

B.M. - CITY OF WICHITA STD. DISC 43.5 FT. SOUTH AND 52.7 FT. EAST OF INTERSECTION OF CENTER LINES OF MAIZE RD. AND MAPLE ELEV. = 133.195 CITY DATUM ELEV. = 1320.595 M.S.L.

MINIMUM PAD ELEVATION SHALL BE AS FOLLOWS:

BLOCK 2 LOTS 9 THROUGH 17.	ELEVATION	139.2 CITY DATUM AND 1326.6 M.S.L.
LOTS 18 THROUGH 31, AND LOTS 36 THROUGH 44.	ELEVATION	143.0 CITY DATUM AND 1330.4 M.S.L.
BLOCK 4 LOTS 22 THROUGH 29 AND LOTS 39 THROUGH 41.	ELEVATION	139.2 CITY DATUM AND 1326.6 M.S.L.

- RESERVE "A"
- RESERVE "B"
- RESERVE "C"
- RESERVE "D"
- RESERVE "E"
- RESERVE "F"
- RESERVE "G"
- RESERVE "H"
- RESERVE "I"
- RESERVE "J"
- RESERVE "K"
- RESERVE "L"