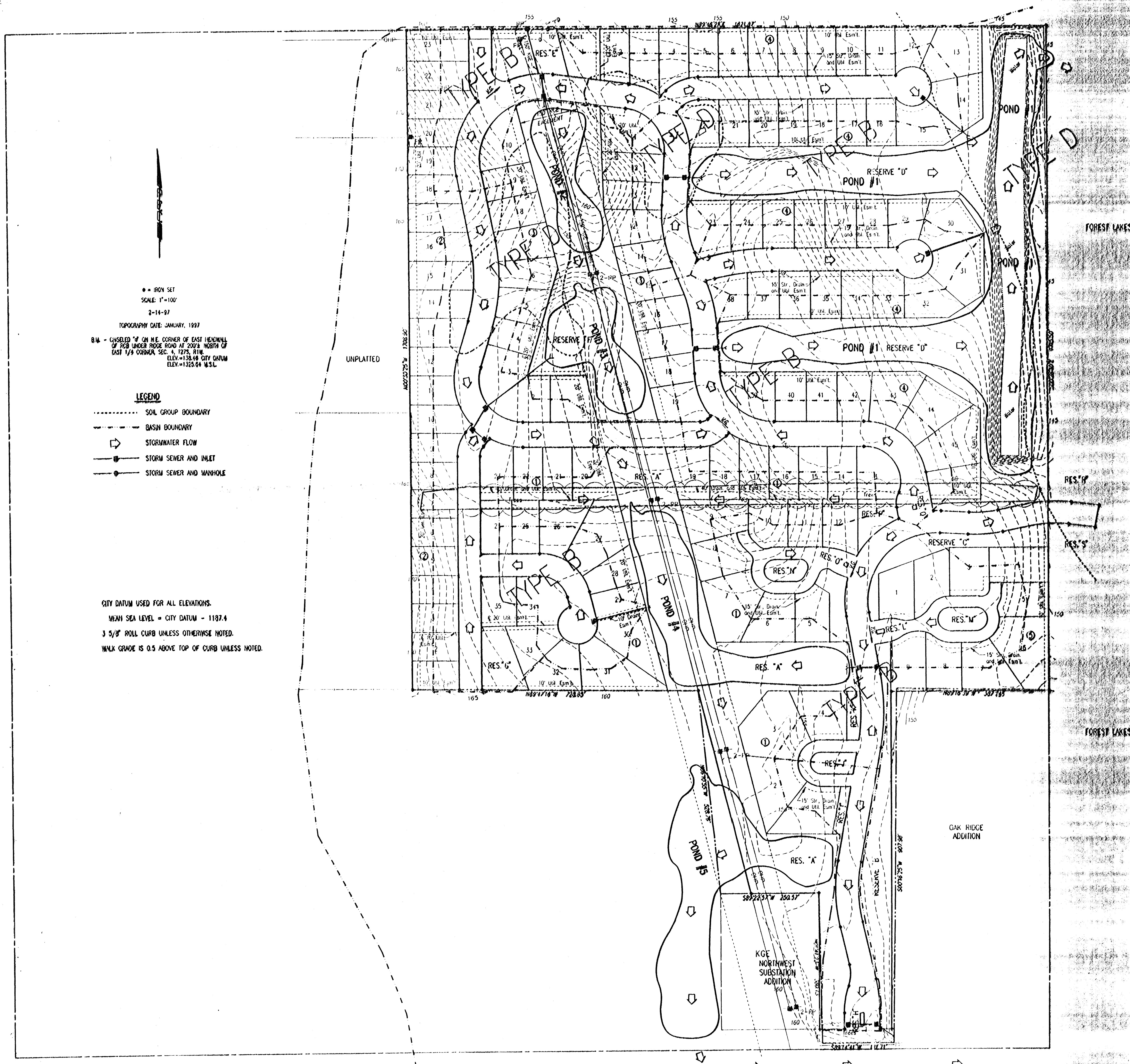


DRAINAGE CONCEPT FOR
FOREST LAKES WEST
 AN ADDITION TO WICHITA, SEDGWICK COUNTY, KANSAS

UNPLATED



• = IRON SET
 SCALE: 1"=100'
 2-14-97
 TOPOGRAPHY DATE: JANUARY, 1997
 B.M. - CHISELED "I" ON N.E. CORNER OF EAST HESMALL
 OF ROB UNDER RIDGE ROAD AT 2003' NORTH OF
 EAST 1/4 CORNER, SEC. 4, T27S, R1W.
 ELEV.=138.48 CITY DATUM
 ELEV.=1328.64 M.S.L.

- LEGEND**
- SOIL GROUP BOUNDARY
 - - - BASIN BOUNDARY
 - ◻ STORMWATER FLOW
 - STORM SEWER AND INLET
 - STORM SEWER AND MANHOLE

CITY DATUM USED FOR ALL ELEVATIONS.
 MEAN SEA LEVEL = CITY DATUM - 1187.4
 3 5/8" ROLL CURB UNLESS OTHERWISE NOTED.
 WALK GRADE IS 0.5 ABOVE TOP OF CURB UNLESS NOTED.