

PRELIMINARY PLAT OF
FOREST LAKES WEST

OWNER: BOOTHE AND SCHELLENBERG DEV. CO., INC.
7926 W. 21ST. NORTH
WICHITA, KANSAS 67205

ENGINEER: PROFESSIONAL ENGINEERING CONSULTANTS, P.A.
303 S. TOPEKA
WICHITA, KANSAS 67207

N.W. Corner S.W. 1/4
Sec. 33, T26S, R1W
of the 6th P.M.
Found Limestone w/
404' Nail in Center

ALEN AND GEORGE RENNIK
UNPLATTED
SF-20

CHARLES AND CONNIE WOODARD
UNPLATTED
SF-20

N.E. Corner S.W. 1/4
Sec. 33, T26S, R1W
of the 6th P.M.
Found 1/2" Bar

SCALE: 1"=100'
2-14-97

TOPOGRAPHY DATE: JANUARY, 1997

B.M. - CHISELED "d" ON N.E. CORNER OF EAST HEADWALL
OF ROB UNDER RIDGE ROAD AT 200± NORTH OF
EAST 1/4 CORNER, SEC. 4, T27S, R1W
ELEV.=138.46 CITY DATUM
ELEV.=1325.64 M.S.L.

POWER: OVERHEAD ELECTRIC 3 PHASE, 4 WIRE, EAST-WEST
ON 29TH STREET APPROX. 25' NORTH OF CENTERLINE
7.2/13.2 KV NORTH-SOUTH ON WEST SIDE TYLER.

TELEPHONE: BURIED TELEPHONE EAST-WEST ON 29TH
STREET APPROX. 21' SOUTH OF CENTERLINE.

NATURAL GAS: 4" PEOPLES PLASTIC GAS MAIN ON 29TH
STREET, WEST END = 117' WEST OF WEST LINE OF
FOREST LAKES.

WATER: 12" WATER MAIN EAST-WEST ON NORTH LINE
OF 29TH STREET APPROX. 2640' EAST OF TYLER.
16" WATER MAIN NORTH-SOUTH ON WEST SIDE OF
TYLER APPROX. 1900' SOUTH OF 29TH STREET.

© TYLER ROAD = SECTION LINE

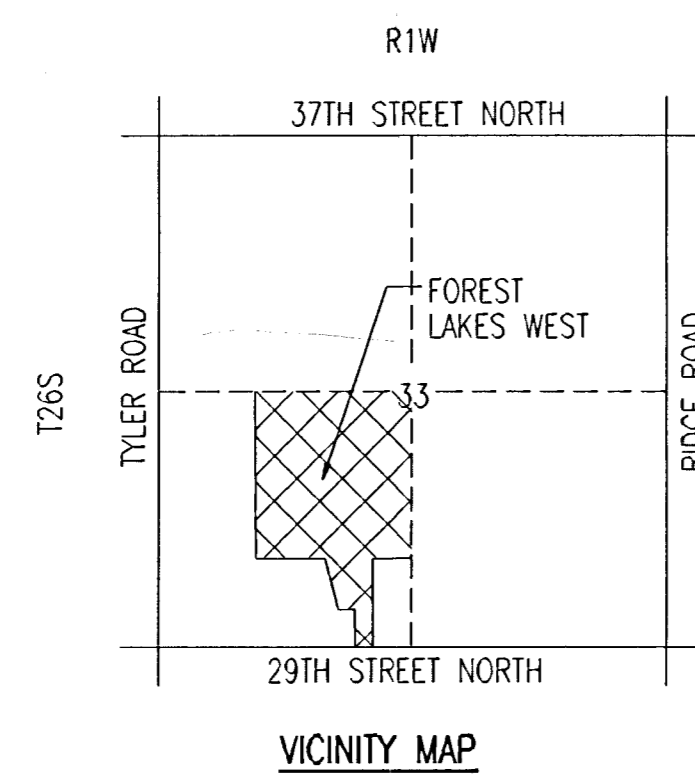
RESERVES "A", "C", and "I" ARE FOR ELECTRICAL POWER LINE EASEMENT,
DRAINAGE, WALKWAYS, ENTRY MONUMENTS, LAKES, LANDSCAPING, RECREATION
FACILITIES, AND UTILITIES CONFINED TO EASEMENTS.

RESERVES "J", "M", and "N" ARE FOR LANDSCAPING, PARKING, AND UTILITIES
CONFINED TO EASEMENTS.

RESERVES "H", "L", "O", and "Q" ARE FOR LANDSCAPING, ENTRY MONUMENTS, AND
UTILITIES CONFINED TO EASEMENTS.

RESERVES "G", "K", "P", "R", "S", and "T" ARE FOR LANDSCAPING ENTRY
MONUMENTS, WALLS, AND UTILITIES CONFINED TO EASEMENTS.

RESERVES "B", "D", "E", and "F" ARE FOR LANDSCAPING, DRAINAGE, WALKWAYS,
LAKES, WALLS, ENTRY MONUMENTS, AND UTILITIES CONFINED TO EASEMENTS.



FREEDOM DEVELOPMENT INC.
SF-20

© 29TH STREET NORTH = SECTION LINE

S.W. Corner S.W. 1/4
Sec. 33, T26S, R1W
of the 6th P.M.
Found 1" Iron Pipe

S.E. Corner S.W. 1/4
Sec. 33, T26S, R1W
of the 6th P.M.
Found Thimble

DSMR, SANCHEZ OPER. DEP. SCALE: 1"=100.00
01/1997/13/2004 PRELIM.DWG 02-13-1997 2:42:05 pm