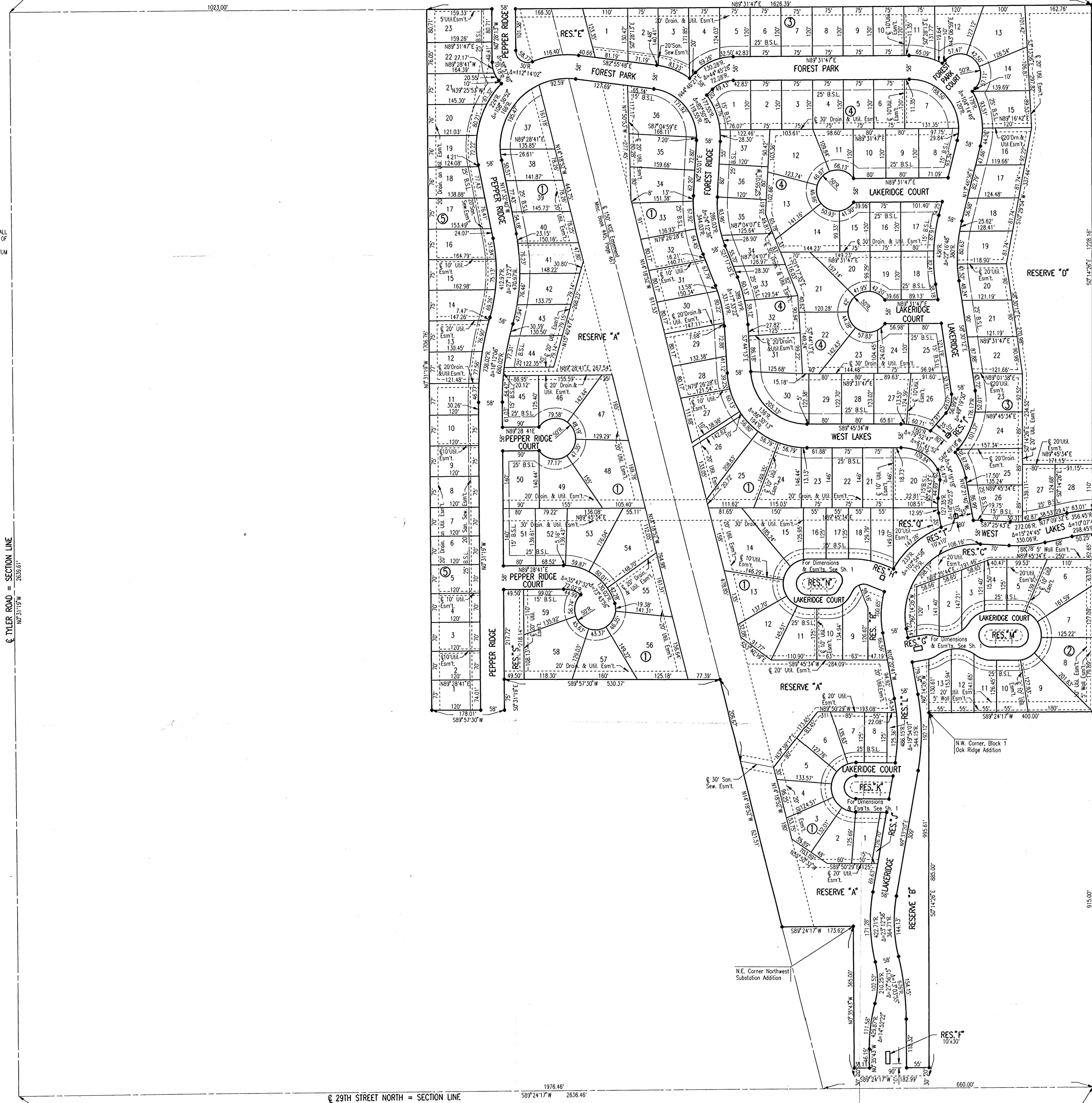


# FOREST LAKES WEST

AN ADDITION TO WICHITA, SEDGWICK COUNTY, KANSAS

N.W. Corner S.W. 1/4  
Sec. 33, T26S, R1W  
of the 6th P.M.  
Found Limestone w/  
404 Nail in Center

N.E. Corner S.W. 1/4  
Sec. 33, T26S, R1W  
of the 6th P.M.  
Found 1/2" Bar



SCALE: 1"=100'

● IRON SET

B.S.L. = BUILDING SETBACK LINE

B.M. - CHISELED "S" ON N.E. CORNER OF EAST HEADWALL  
OF RIB UNDER RIDGE ROAD AT 200'± NORTH OF  
EAST 1/4 CORNER, SEC. 4, T27S, R1W.  
ELEV.=138.46 CITY DATUM  
ELEV.=1325.64 M.S.L.

Q TYLER ROAD = SECTION LINE  
N.P. 31°15' W 2639.61'

Q 29TH STREET NORTH = SECTION LINE  
S89°24'17" W 2636.46'

S.W. Corner S.W. 1/4  
Sec. 33, T26S, R1W  
of the 6th P.M.  
Found 1" Iron Pipe

S.E. Corner S.W. 1/4  
Sec. 33, T26S, R1W  
of the 6th P.M.  
Found Thimble