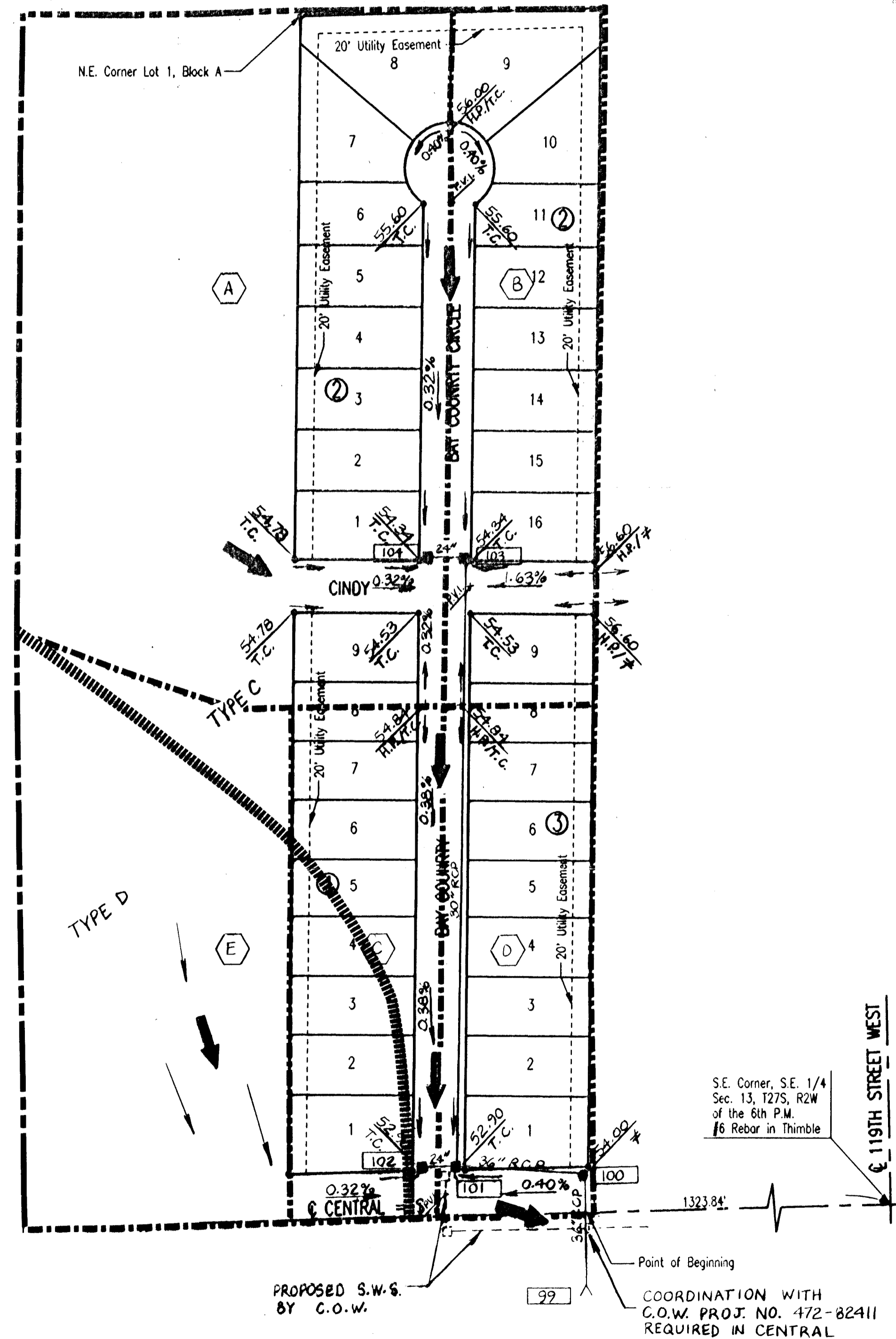


DRAINAGE PLAN  
**COUNTRY MEADOWS WEST ADDITION**  
 TO WICHITA, SEDGWICK COUNTY, KANSAS



SCALE: 1"=100'

• = IRON SET  
 B.S.L. = BUILDING SETBACK LINE  
 (R) = RECORD DIMENSION

B.M. - STANDARD CITY OF WICHITA B.M. DISC 40' EAST AND 46' SOUTH OF THE INTERSECTION OF THE CENTERLINES OF CENTRAL AND 119TH STREET WEST.  
 ELEV.=156.93 CITY DATUM  
 ELEV.=1344.33 M.S.L.

B.M. - CHISELED '3' IN TOP OF CURB, NORTH SIDE HICKORY STREET, 56.5' EAST OF C. 119TH STREET WEST.  
 ELEV.=158.97 CITY DATUM  
 ELEV.=1346.37 M.S.L.

- LEGEND**
- MAJOR BASIN BOUNDARY
  - - - MINOR BASIN BOUNDARY
  - ||||| SOIL GROUP BOUNDARY
  - MINOR STORM FLOW
  - MAJOR STORM FLOW
  - PROPOSED STORM SEWER & INLET
  - PROPOSED STORM SEWER & MANHOLE
  - ⊙ DRAINAGE BASIN IDENTIFIER
  - ⓐ NODE IDENTIFIER
  - T.C. TOP OF CURB ELEVATION
  - H.P. HIGH POINT
  - ≠ MATCH EXISTING

NOTE: ELEVATIONS BASED ON C.O.W. DATUM  
 M.S.L. DATUM = C.O.W. DATUM + 1187.4  
 COMPUTATIONS BASED ON C.O.W. STANDARD 6 3/8" CURB & GUTTER, REINFORCED CONCRETE PIPE (n=0.013), & MINIMUM WALK GRADE OF 0.41 FT. ABOVE TOP OF CURB.



04-12-1996